

IMPORTANT: Installation Notes for Windows 7 and Windows Server 2008 R2 Users

The automated installers on the CD or DVD-ROM supplied with the machine were originally designed for Microsoft operating systems up to Windows Vista only. For installation under the new Microsoft Windows 7 or Microsoft Windows Server 2008 R2, please follow the steps described in this document.

A - Summary:

This procedure applies to the following printer models for the version shown on the Utilities and Documentation CD or DVD-ROM:

- bizhub C20P 1.00EU, 1.01EU, 1.30EU
- bizhub C31P 1.00EU, 1.30EU
- bizhub 40P 1.00EU, 1.01EU, 1.30EU
- magicolor 1650 1.00EU, 1.30EU
- magicolor 4650 1.00EU, 1.30EU
- magicolor 5650 1.00EU, 1.01EU, 1.30EU
- magicolor 5670 1.00EU, 1.01EU, 1.30EU
- magicolor 7450II 1.00EU, 1.10EU, 1.20EU
- magicolor 8650 1.00EU, 1.10EU
- pagepro 4650 1.00EU, 1.30EU
- pagepro 5650 1.00EU, 1.30EU

If the CD/DVD-ROM supplied with your machine shows a higher version, you do not need to follow this procedure and can simply use the automated integrated installer that will start automatically when the CD/DVD-ROM is inserted in your drive.

This procedure applies to the following operating systems:

- Windows 7 (All Editions)
- Windows Server 2008 R2 (All Editions)

If you are using an older operating system, such as Microsoft Windows XP or Microsoft Windows Vista, you do not need to follow this procedure and can simply use the automated integrated installer that will start automatically when the CD/DVD-ROM is inserted in your drive.

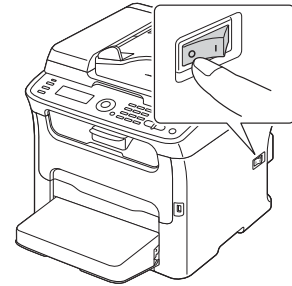
Depending on the type of installation, please refer to the following sections:


- Printer driver(s) with USB connection:
 - B – Preparation**, and
 - C – Printer Driver USB Installation**
- Printer driver(s) with network connection:
 - B – Preparation**, and
 - D – Printer Driver Network Installation**
- Other Software and Notes:
 - E – Other Software and Notes**

For updated software, utilities, drivers or instructions concerning Windows 7 and Windows Server 2008 R2, we kindly advise that you regularly check our website <http://www.konicaminolta.eu/newos>.

B - Preparation:

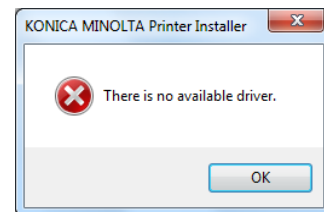
1. Make sure your printer is powered-off.



2. If the CD/DVD-ROM Installer is already started, please stop it by pressing the  (**Exit**) button.



3. If the installation is attempted from the CD/DVD-ROM Installer menus, or from **Windows\Setup.exe**, the following error message will be displayed. Simply click on **OK**, then follow the instructions described in this document.



4. If the printer is to be connected via USB, please follow the instructions given in **Section C – Printer Driver USB Installation** on the following pages.

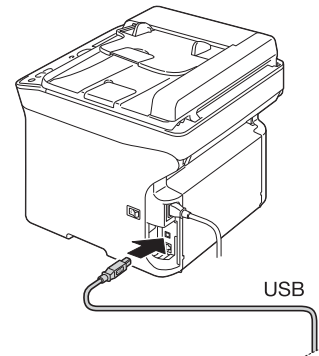


5. If the printer is to be connected via a network, please follow the instructions given in **Section D – Printer Driver Network Installation** on the following pages.

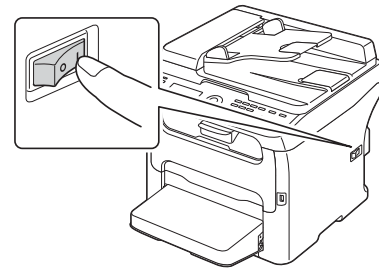


C – Printer Driver USB Installation:

1. Connect your printer to your Windows 7 computer using a USB cable.

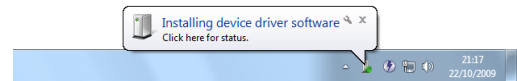


2. Switch your printer on and wait until **Ready** or **Idle** is displayed on the printer panel.

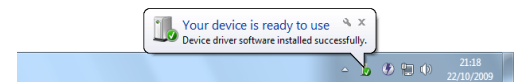


3. Windows will now attempt to automatically locate and install a driver for your printer.

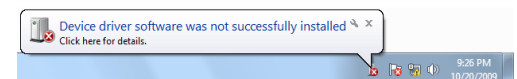
Please note that this step might take several minutes to complete, depending on your Internet speed and your Windows Update settings.



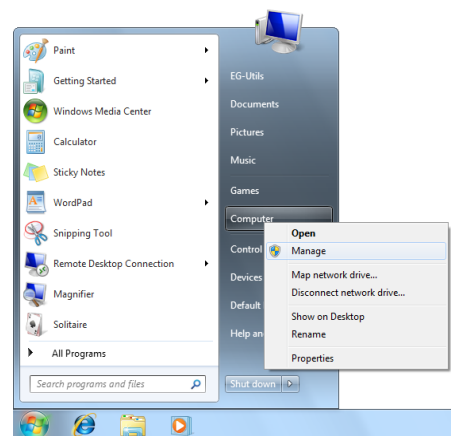
4. If successful, please proceed directly to step 13.



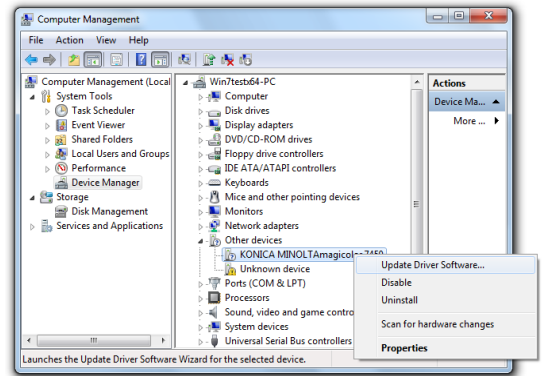
5. If unsuccessful, please continue with step 6 below.



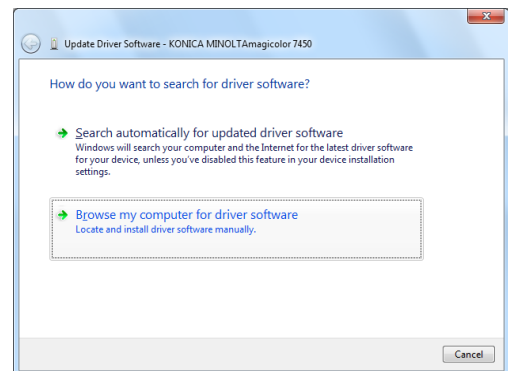
6. Right-click on **My Computer** and select **Manage**.



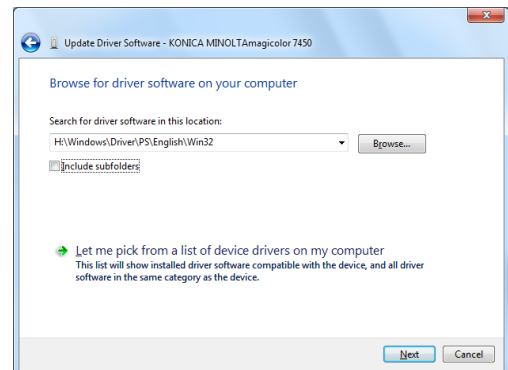
- In the **Computer Management** console left panel, click on **Device Manager**, then locate your device in the list of **Other devices**, right-click and select **Update Driver Software**.



- Make sure the CD or DVD-ROM that was included in your printer box is inserted in your CD/DVD-ROM drive, then select **Browse my computer for driver software**.

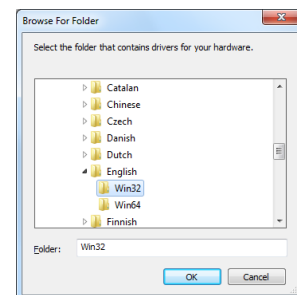


- Make sure the option **Include subfolders** is disabled, then click on **Browse**.

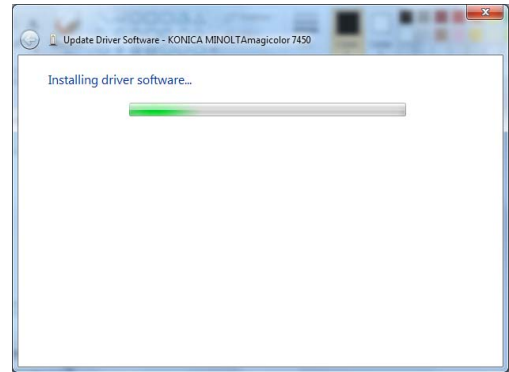


- Go to your CD/DVD-ROM drive, then to the **Windows\Driver\<Emulation>\<Language>\<Platform>** folder corresponding to the desired Printer Emulation, User language and Windows platform.

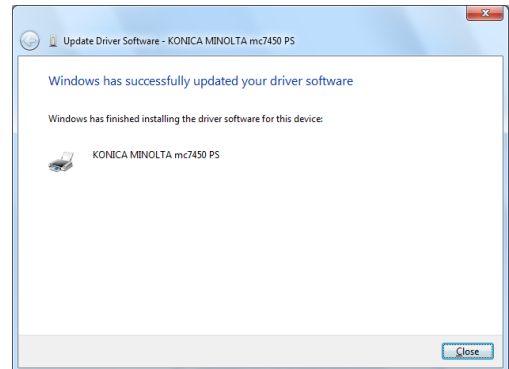
If you downloaded more up-to-date drivers from the Internet, you can go straight to the location where you decompressed these driver files.



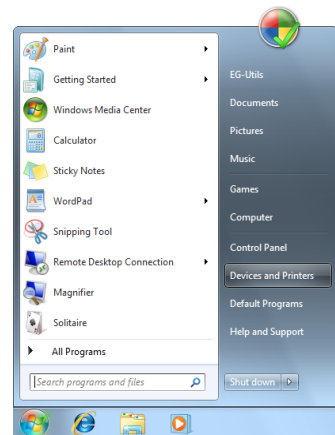
11. Wait while the printer driver is installed.



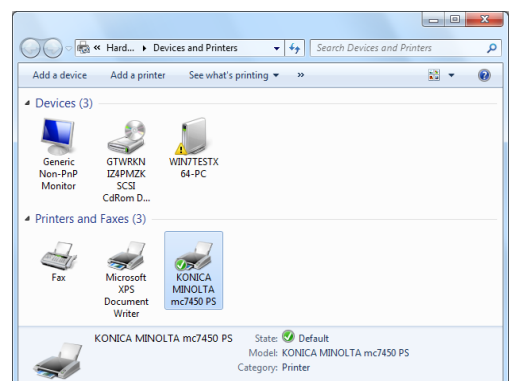
12. Once the installation is complete, click on **Close** and then close the **Computer Management** console.



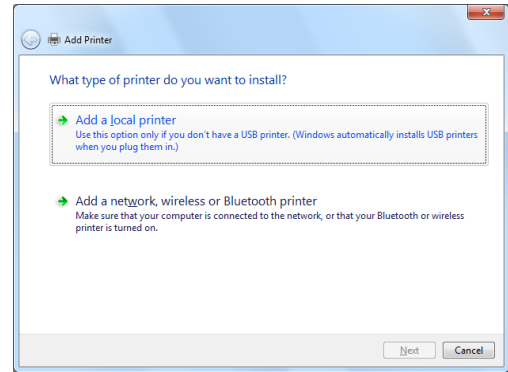
13. Select **Devices and Printers** from the Windows **Start** menu.



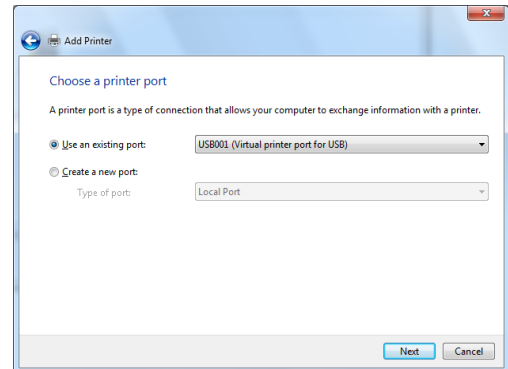
14. Your new printer is now ready to be used. However, please note that if step 4 was successful, you are now using a limited inbox driver (can be recognized by the PPD or XPS extension). We strongly recommend that you now install the full featured KONICA MINOLTA drivers.



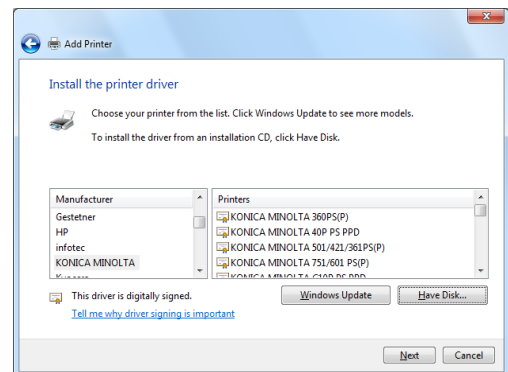
15. To install additional full featured KONICA MINOLTA drivers from the CD/DVD-ROM that was included in your printer box, click on **Add a printer** again, then select **Add a local printer**.



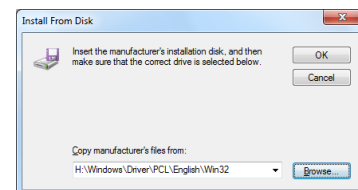
16. Select **Use an existing port**, then select the **USBxxx (Virtual printer port for USB)** port that shows the highest number xxx, then click on **Next**.



17. Select **Have Disk** in this screen.

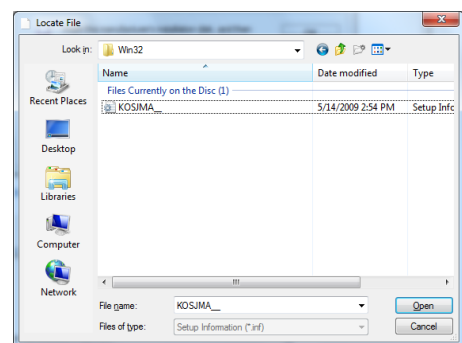


18. Make sure the CD or DVD-ROM that was included in your printer box is inserted in your CD/DVD-ROM drive, then click on **Browse**.

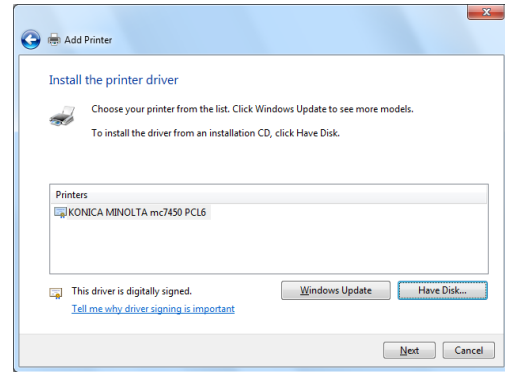


19. Go to your CD/DVD-ROM drive, then to the **Windows\Driver\<Emulation>\<Language>\<Platform>** folder corresponding to the desired Printer Emulation, User language and Windows platform.

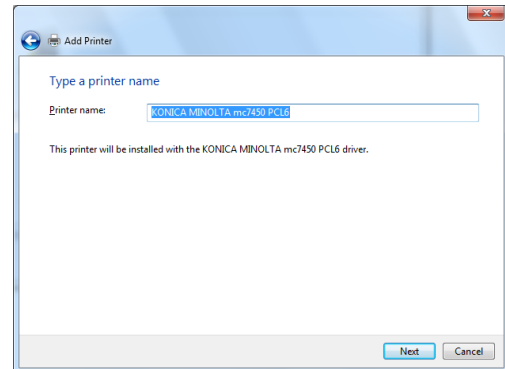
If you downloaded more up-to-date drivers from the Internet, you can go straight to the location where you decompressed these driver files.



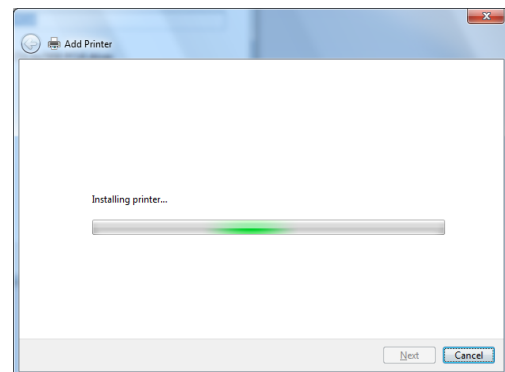
20. Ensure the correct driver is selected, then click on **Next**.



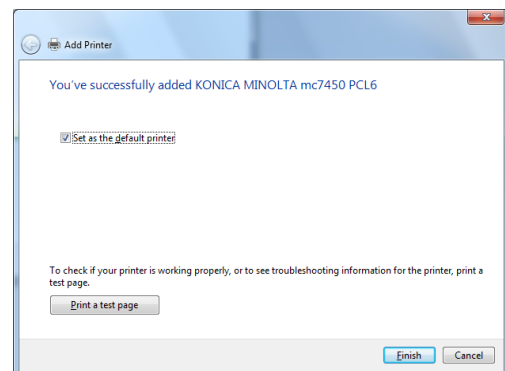
21. Edit the printer name as required, then click on **Next**.



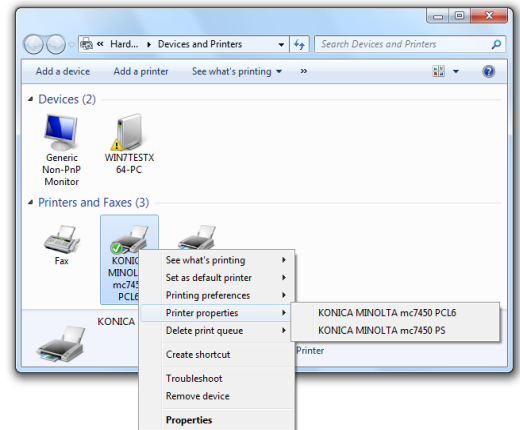
22. Wait while the printer driver is installed.



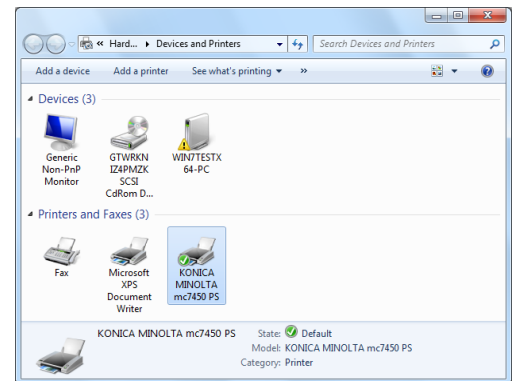
23. Once the installation is complete, you can print a test page, then click on **Finish**.



24. Your new printer is now ready to be used, however please note that only one icon might appear in **Devices and Printers** with the name of the default driver. To find the other drivers, you will need to right-click the printer icon, then select **Printing preferences** or **Printer properties**.

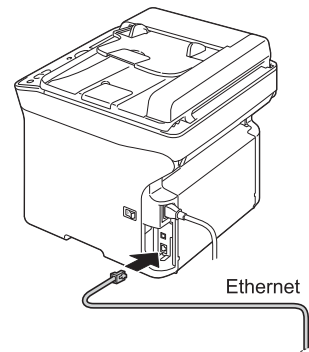


25. Follow steps 15 to 24 for each new driver.

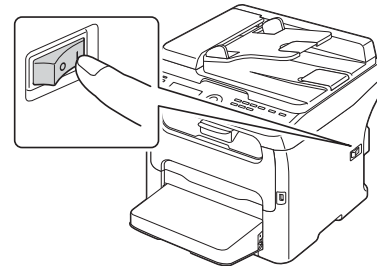


D – Printer Driver Network Installation:

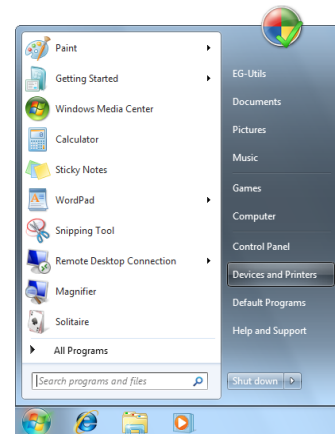
1. Connect your printer to your network using an Ethernet network cable.



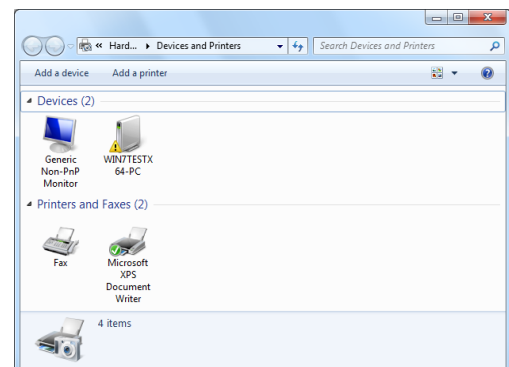
2. Switch your printer on and wait until **Ready** or **Idle** is displayed on the printer panel.



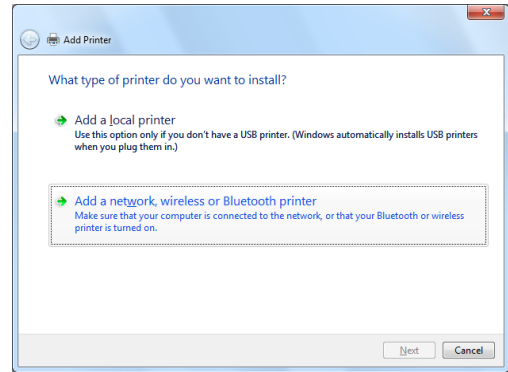
3. Select **Devices and Printers** from the Windows **Start** menu.



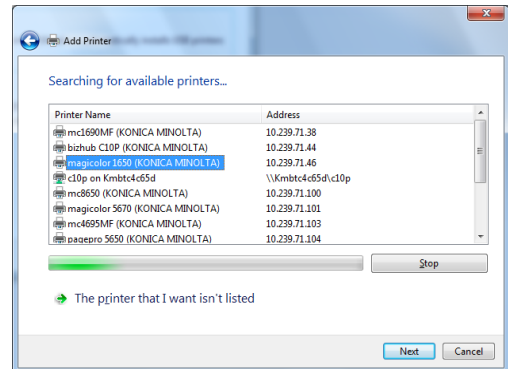
4. Select **Add a printer**.



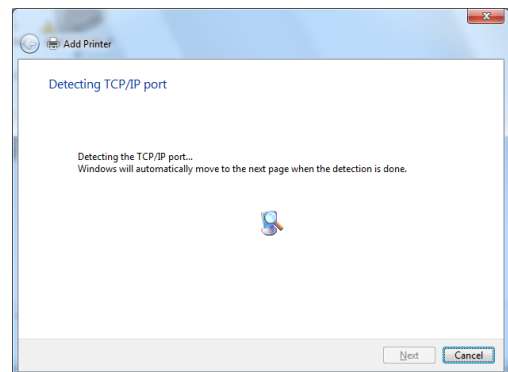
5. Select **Add a network, wireless or Bluetooth printer.**



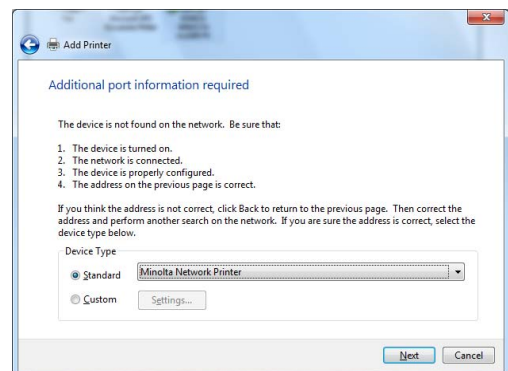
6. Select your model from the list of printers that Windows found on your network, note the corresponding **xxx.xxx.xxx.xxx Address**, then click on **Next**.



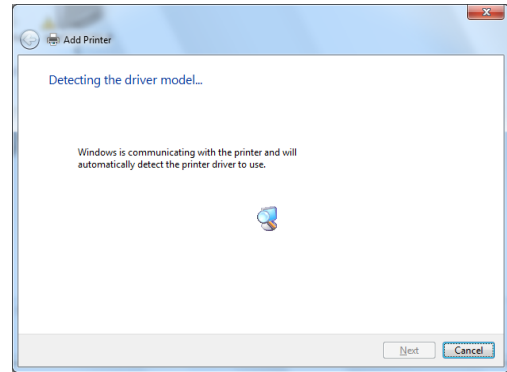
7. Windows will now attempt to automatically retrieve your printer network settings.



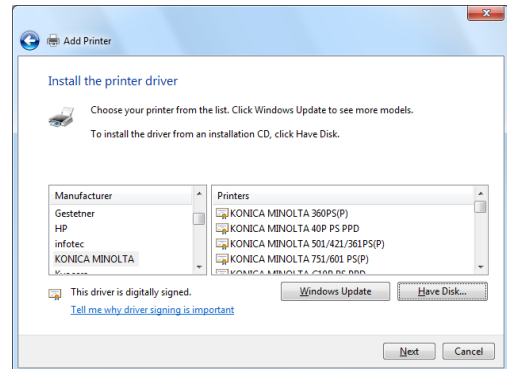
8. If successful, please proceed directly to step 9, otherwise manually select **Standard Minolta Network Printer** in this screen.



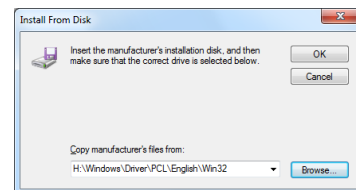
9. Windows will now attempt to automatically locate a driver for your printer.



10. If successful, please proceed directly to step 14, otherwise select **Have Disk** in this screen.

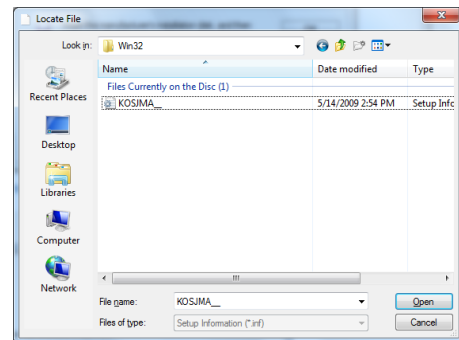


11. Make sure the CD or DVD-ROM that was included in your printer box is inserted in your CD/DVD-ROM drive, then click on **Browse**.

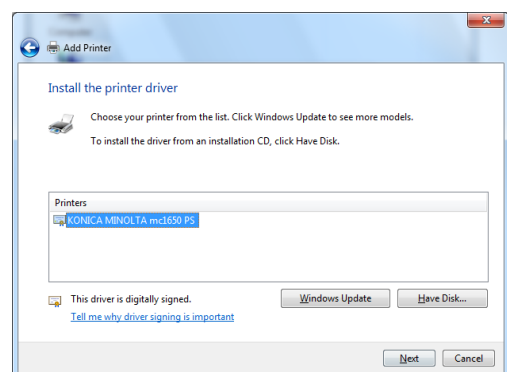


12. Go to your CD/DVD-ROM drive, then to the **Windows\Driver\<Emulation>\<Language>\<Platform>** folder corresponding to the desired Printer Emulation, User language and Windows platform.

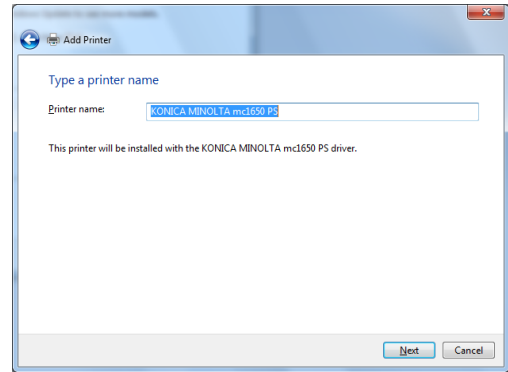
If you downloaded more up-to-date drivers from the Internet, you can go straight to the location where you decompressed these driver files.



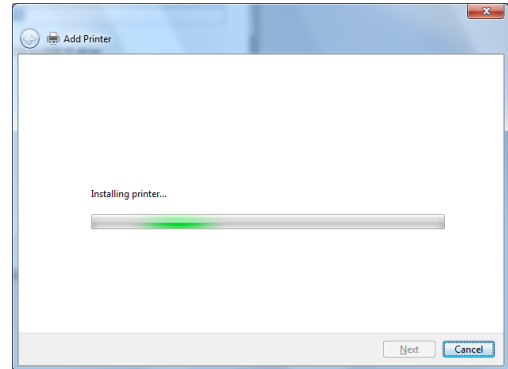
13. Ensure the correct driver is selected, then click on **Next**.



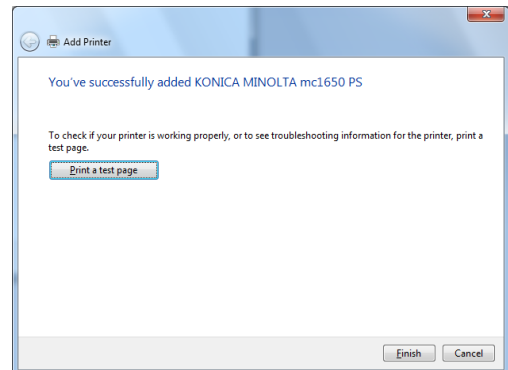
14. Edit the printer name as required, then click on **Next**.



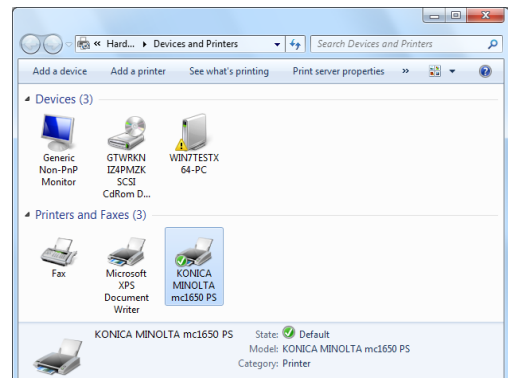
15. Wait while the printer driver is installed.



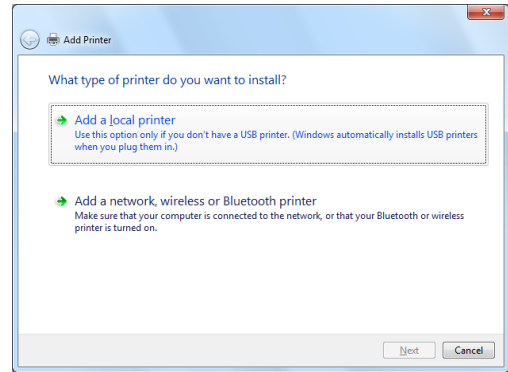
16. Once the installation is complete, you can print a test page, then click on **Finish**.



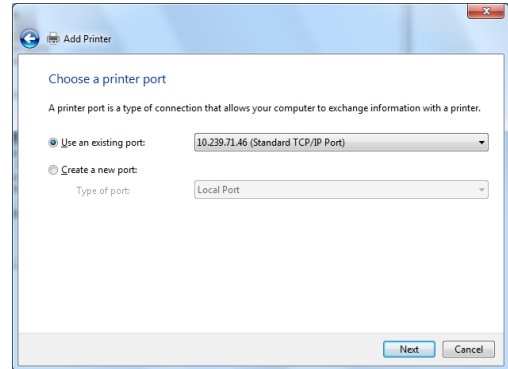
17. Your new printer is now ready to be used. However, please note that if step 9 was successful, you are now using a limited inbox driver (can be recognized by the PPD or XPS extension). We strongly recommend that you now install the full featured KONICA MINOLTA drivers.



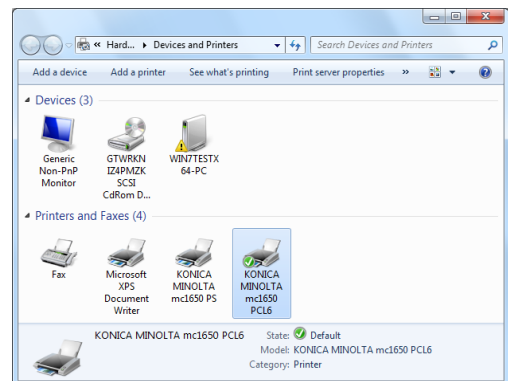
18. To install additional full featured KONICA MINOLTA drivers from the CD/DVD-ROM that was included in your printer box, click on **Add a printer** again, then select **Add a local printer**.



19. Select **Use an existing port**, then select the **xxx.xxx.xxx.xxx (Standard TCP/IP Port)** port that shows the same address **xxx.xxx.xxx.xxx** as noted during step 6, then click on **Next**.



20. Follow steps 10 to 19 for each new driver.



E – Other Software and Notes:

- All Manuals provided on this CD/DVD-ROM are suitable and can be found using the CD/DVD-ROM Installer menus.
- The version of Acrobat Reader provided on this CD/DVD-ROM should install and function properly under Windows 7, however, we strongly advise that you download and install the latest version available from Adobe on www.adobe.com, or following the CD/DVD-ROM Installer menus.
- Most software and utilities provided on this CD/DVD-ROM should install and function correctly under Windows 7.
- For updated software, utilities, drivers or instructions concerning Windows 7 and Windows Server 2008 R2, we kindly advise that you regularly check our website <http://www.konicaminolta.eu/newos>.

Revision: 6
Date: October 27, 2009
Type: Emperon (Type 1)

KONICA MINOLTA is a trademark or a registered trademark of KONICA MINOLTA HOLDINGS, INC.
bizhub, magicolor and pagepro are trademarks or registered trademarks of KONICA MINOLTA
BUSINESS TECHNOLOGIES, INC.

Microsoft and Windows are either registered trademarks or trademarks of Microsoft Corporation in the
United States and/or other countries.

All other trademarks are the property of their respective owners.

Copyright © 2009 KONICA MINOLTA BUSINESS TECHNOLOGIES, INC.
All rights reserved.