



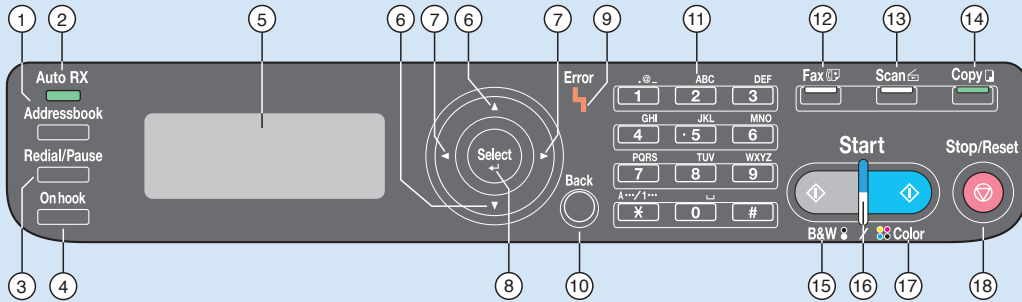
KONICA MINOLTA

magicolor 4690MF

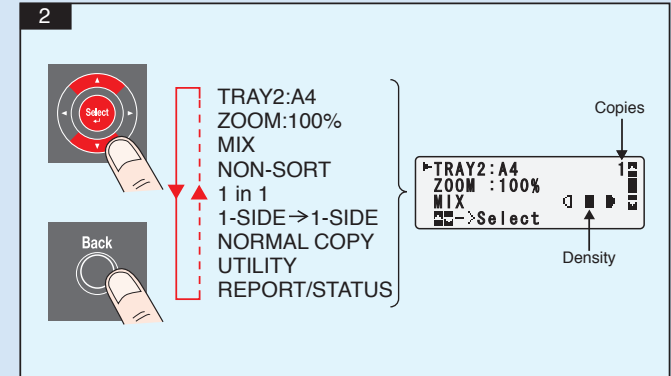
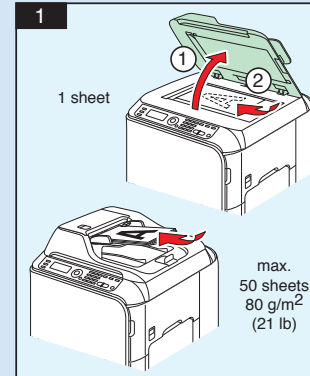
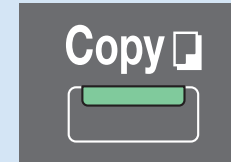
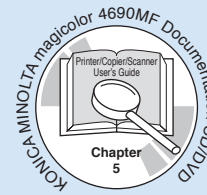
Quick Guide

1760616-001B

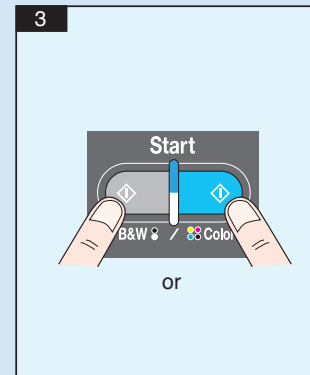
A0FD-9605-01



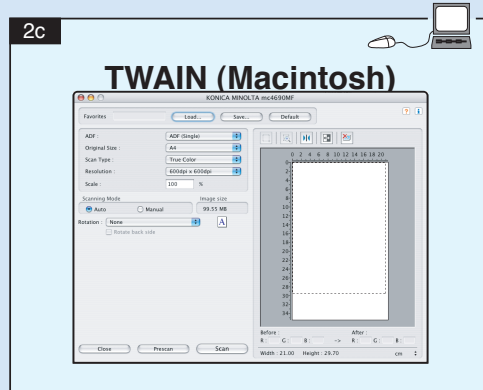
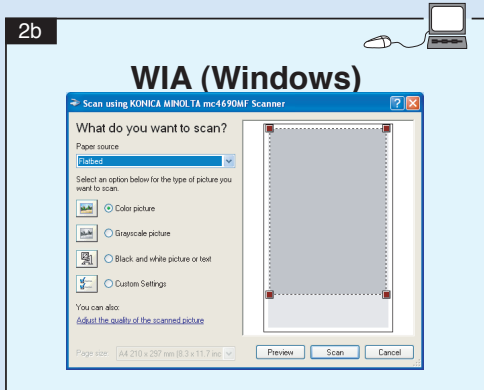
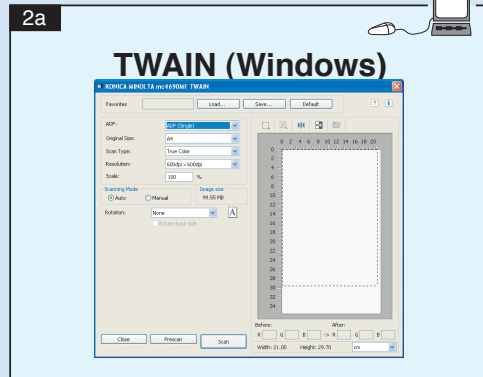
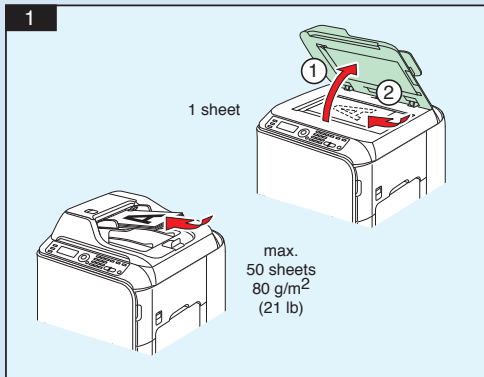
Item	Name	Function
1	Addressbook key	Displays the information registered in the favorite list, speed dial destinations and group dial destinations
2	Auto RX indicator	Lights up when the automatic receiving function is selected
3	Redial/Pause key	Recalls the last number dialed Inserts a pause when a number is dialed
4	Onhook key	Sends and receives transmissions with the receiver on the hook
5	Message Window	Displays settings, menus, and messages
6	▲/▼ keys	Moves up and down through menus, options, or choices
7	◀/▶ keys	Moves left and right through menus, options, or choices
8	Select key	Press to select the setting that is currently displayed
9	Error indicator	Indicates an error condition
10	Back key	Clears the specified number of copies and entered text Press to return to the previous screen Press to cancel the setting that is currently displayed
11	Keypad	Enters desired number of copies Enters fax numbers, mail addresses, and names of recipients
12	Fax key/LED	Enters Fax mode Lights up in green to indicate that the machine is in Fax mode
13	Scan key/LED	Enters Scan mode (Scan to E-mail, Scan to FTP, Scan to a shared folder on a computer, Scan to PC, or Scan to USB Memory) Lights up in green to indicate that the machine is in Scan mode
14	Copy key/LED	Enters Copy mode Lights up in green to indicate that the machine is in Copy mode
15	Start (B&W) key	Starts monochrome copying, scanning or faxing
16	Start indicator	Lights up in blue when copying and fax transmission are possible Lights up in orange when copying and fax transmissions are not possible, for example, during warm-up or if an error has occurred
17	Start (Color) key	Starts color copying, scanning or faxing
18	Stop/Reset key	Returns the settings to their defaults and stops functions



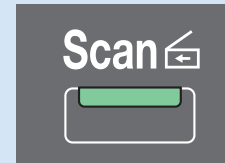
Note : Refer to the Printer/Copier/Scanner User's Guide (PDF manual on the CD/DVD) for details on copy functions.



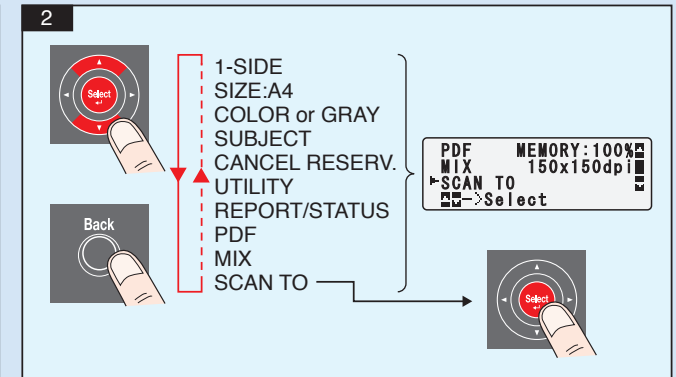
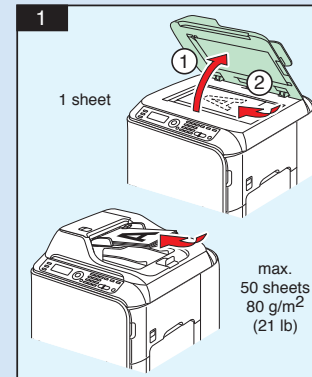
Scan from TWAIN (Windows)
 Scan from WIA (Windows)
 Scan from TWAIN (Macintosh)



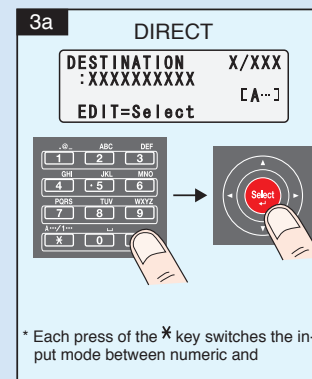
Note : Refer to the Printer/Copier/Scanner User's Guide (PDF manual on the CD/DVD) for details on how to use the scanner driver.



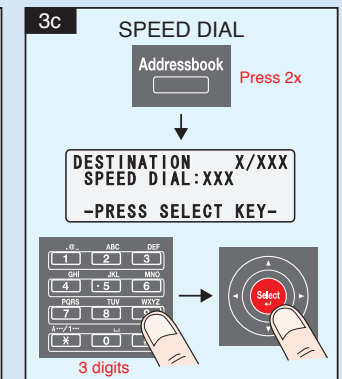
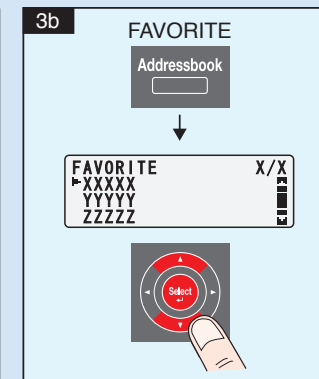
Scan to E-mail / FTP / SMB

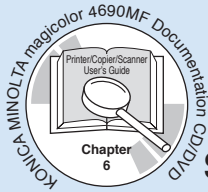


Note : Refer to Printer/Copier/Scanner User's Guide (PDF manual on the CD/DVD) for details on Scan to



* Each press of the * key switches the input mode between numeric and





Scan to E-mail / FTP / SMB (cont.)

3d GROUP DIAL

Addressbook Press 3x

↓

DESTINATION X/XXX
GROUP DIAL: XX

-PRESS SELECT KEY-

2 digits

3e PHONE BOOK

Addressbook Press 4x

↓

PHONE BOOK 1/1
▶LIST
SEARCH
LDAP SEARCH

4

Start

B&W / Color

or

BOOK
(Original glass)
Step 5

5

NEXT PAGE? 1

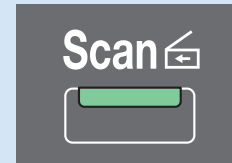
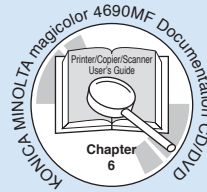
SCAN=Select
SEND=Start

SCAN or SEND

Start

B&W / Color

or



Scan to PC

1

1 sheet

max.
50 sheets
80 g/m²
(21 lb)

2

PDF MEMORY:100%
MIX 150x150dpi
▶SCAN TO
->Select

▶SET DESTINATION
SCAN TO PC

3

PC SCANNER MODE
PRESS START KEY TO
SCAN ORIGINAL(S)

Start

B&W / Color

or

Note : The Scan-to-PC function can be used when the TWAIN Scanner driver, Printer driver, and KONICA MINOLTA LinkMagic (Windows only) are installed on your PC. Make sure that KONICA MINOLTA LinkMagic is started first. Refer to Printer/Copier/Scanner User's Guide (PDF manual on the CD/DVD) for details on Scan to PC.

Scan to USB Memory

1

1 sheet

max.
50 sheets
80 g/m²
(21 lb)

2

3

PDF MEMORY:100%
MIX 150x150dpi
▶SCAN TO
▶START=ScanToUSB

Start

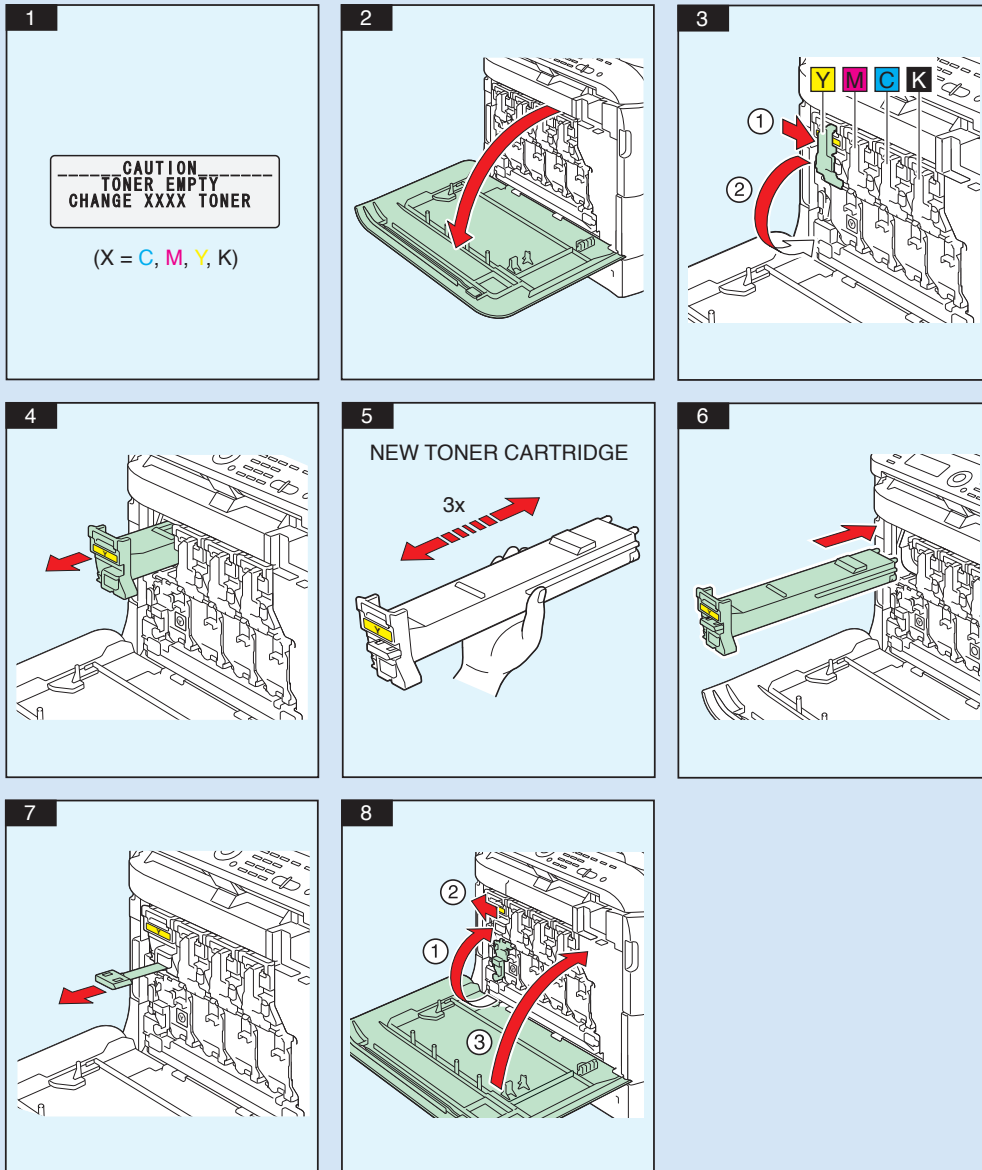
B&W / Color

or

Note : Refer to Printer/Copier/Scanner User's Guide (PDF manual on the CD/DVD) for details on Scan to USB Memory.

REPLACING CONSUMABLES

TONER CARTRIDGE



REPLACING CONSUMABLES

IMAGING UNIT

