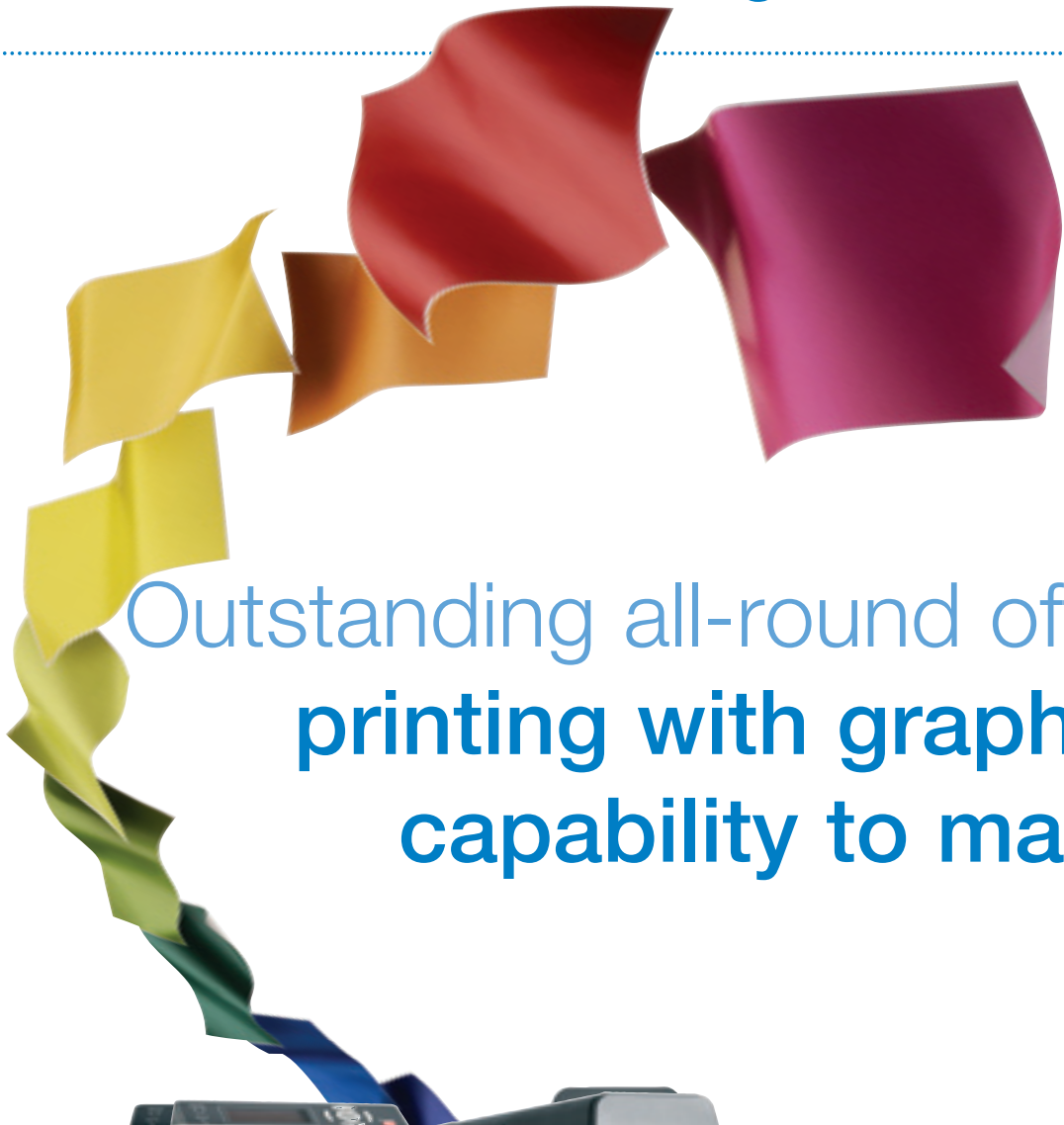




KONICA MINOLTA

magicolor® 7450



Outstanding all-round office  
**printing with graphics  
capability to match**



**REVOLUTION IN COLOUR PRINTING**



KONICA MINOLTA

# Outstanding all-round office printing with graphics capability to match

If you're looking for an office printing solution that offers the ultimate in quality, power, speed and versatility, you've found it. It's the magicolor® 7450 – Konica Minolta's top of the range printer. Equally at home with high-volume print runs as it is with high coverage/low volume graphical output, it speeds through any print job in no time. With flexible media handling and high-yield consumables keeping user interaction to a minimum, this is a printer that meets the demands of users right across the board.



## Handling the complete range of printing scenarios

In today's office, speed matters. Printing at 25 ppm A4 and 13 ppm A3 and with first page out in just 10 seconds, this is a machine that won't keep you hanging around. And when demanding colour output is required, it's more than up to the task, handling A3+ printouts and banners up to 1.2 metres long with ease.

Flexibility is at the heart of the magicolor® 7450. With the ability to print on media up to 256 g/m<sup>2</sup> and with up to 210 g/m<sup>2</sup> duplex printing, professional-standard in-house reports, leaflets and brochures can all be produced. You won't be replacing toner cartridges frequently either – high-yield consumables see to that. All the while, 600 x 600 x 4 bit Photo ART™ contone resolution provides colours that are consistently vivid and true, with razor-sharp graphics and text.





## Power and speed: an effective combination



The state-of-the-art Emperon™ controller, unique to Konica Minolta, is what allows the magicolor® 7450 to exert its remarkable power. With PostScript 3, PCL XL2.1 and PCL 5e/c emulations allowing simultaneous printing from diverse workgroups and applications, one minute is all it takes to print 25 colour or monochrome A4 pages, or 13 A3 pages. Processing documents at incredible speed, Emperon brings new levels of efficiency to demanding network environments by virtually eliminating the time between sending a job from your computer and waiting for it to print.

## Uncompromising colour quality

With superlative 600 x 600 x 4 bit Photo ART™ contone resolution, the magicolor® 7450's output quality is superb. Delivering photo-quality detail, greyscales are smoothly and accurately gradated in both colour and monochrome. Four bits (16 levels) are produced per pixel, in contrast to most printers where one bit or two levels per pixel is the norm.



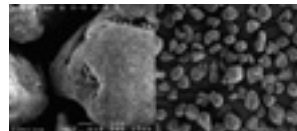
# magicolor® 7450



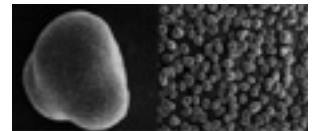
Simitri

## Advanced toner technology for professional printing

Simitri™ is Konica Minolta's unique next-generation polymerised toner. With an extremely fine and uniform particle shape and diameter, it allows high-quality digital images to be printed economically and with great precision. Combined with the magicolor® 7450's unique colour management system, fine lines and small characters all reproduce beautifully, while photographs and illustrations are rendered more naturally thanks to Simitri's ability to improve half-tones. The size and shape of the toner particles allows for enlarged colour space and improved print sharpness. At the same time, Simitri™ provides more efficient coverage, so cost per page is lower. And since there's no oil to be replaced, the life of the printer's fixing unit is prolonged. All of which adds up to lower cost of ownership.



Conventional Toner



Simitri polymerised toner

## Direct Photo Print

The magicolor® 7450 lets you print photos direct from any PictBridge-compliant digital camera. It's fast and easy, and there's no PC involved. Using index printing, it also lets you print a contact sheet first. With the facility to scale and rotate images as well, you have the convenience of managing and editing your photos – all from your camera.



PictBridge



magicolor® 7450

# magicolor® 7450 Quick Overview



## Direct Photo Print

- PictBridge compliant

## Speed

- Print speed A4: Up to 25 ppm colour and monochrome
- Print speed A3: Up to 13ppm colour and monochrome
- First page out: 9.5 seconds monochrome, 11.5 seconds colour
- Warm-up time: 99 seconds
- Gigabit Ethernet

## Graphic Power

- Resolution: 600 x 600 x 4-bit Photo ART™ contone
- Offset simulations: SWOP, Euro, Comm, SNAP, Toyo, DIC, JapanColor, JMPA
- Can print up to 250% coverage

## Versatility

- 100-sheet multi-purpose tray
- 250-sheet multi-purpose cassette up to A3

## Media Handling

- Media weight up to 256 g/m<sup>2</sup>
- A3+ (311 x 457 mm), including crop-marks and colour bars
- Banner printing up to 297 x 1200 mm

## Options

- Automatic duplexer
- 500-sheet lower feeder (up to 3)
- Banner tray
- Cabinet
- Caster base
- Hard disk kit



Banner tray



Cabinet



KONICA MINOLTA

magicolor® 7450

## TECHNICAL DATA

### Printing process

Print method: Electro photographic printing system  
Print speed A4: Up to 25 ppm colour and monochrome  
Print speed A3: Up to 13 ppm colour and monochrome  
First page out: 9.5 seconds monochrome, 11.5 seconds colour  
Warm-up time: 99 seconds  
Resolution: 600 x 600 x 4-bit Photo ART™ contone  
Duty cycle: 120,000 pages per month pages per month

### Hardware and software capabilities

Processor type: Freescale PowerPC, 7447A (733 MHz)  
Memory: 256 MB (max. 1024 MB)  
Printer emulations: PostScript 3, PCL XL 2.1, PCL 5e/c  
Direct print: PDF (version 1.4 command level), JPEG, TIFF (HDD or CompactFlash card required)  
CF card slot: standard  
Printer management: PageScope™ NetCare, PageScope™ Web Connection, PageScope™ Network Setup, PageScope™ Peer to Peer Printing Tool, PageScope™ EMS plug-in, PageScope™ Web Jet Admin plug-in, PageScope™ Plug and Print, PageScope™ NDPS Gateway, download manager, print monitor, status monitor  
Colour support: Enhanced Automatic Image Density Control (eAIDC)  
Colour simulations: SWOP, Commercial Press, Eurocolor, DIC, TOYO, Japan color, JMPA color, SNAP, PANTONE® Colour tables, ICC device profiles  
Registration: Citrix Metaframe, SAP

### Typefaces

137 standard PostScript fonts, 93 PCL scalable fonts, 51 symbols sets and 10 standard line printer fonts.

### Interface Support

Gigabit (10BaseT/100BaseTX/1000BaseT) Ethernet, supports TCP/IP, EtherTalk, IPX/SPX, NetBIOS, IPP 1.1, SNMP, SMB, HTTP, HTTPS (for PageScope™ Web Connection only)  
Bidirectional IEEE 1284 parallel and USB 2.0 (High-Speed)  
PictBridge (Digital Camera via Host USB)

### Operating System Compatibility

Windows®: Server 2003, XP (Home/Pro), 2000, NT 4.0, ME, 98SE  
Macintosh®: OS X 10.2 (or higher), OS 9.1 (or higher)  
Linux®: RedHat 9.0, SuSe 8.2  
Netware®: 4/5/6 (or higher)

### Paper Handling

Standard paper input: 250-sheet multi-purpose cassette + 100-sheet MPT  
Optional paper input: 500-sheet lower paper feeder (max. 3)  
Paper output: 350-sheet (face-down)  
Media sizes supported:  
A3, A3 Wide, A4, B5, B5(ISO), A5, A6, B6, B4, D8K, ledger, legal, letter, G-letter, statement, executive, folio, UK Quatro, Foolscap, G-Legal, 4"x6", 12"x18", custom (90-311 \* 140-1200 mm)  
Envelope sizes supported:  
Com10, C5, C6, DL, monarch, Japanese postcard, double postcard  
Duplexer: A3, A3 Wide, A4, A5, B5, 12" \* 18", executive, letter, G-letter, folio, Legal, G-legal, statement, UK Quarto, foolscap, SP folio  
Printable area: 4mm from right/left edge, 4.2 mm from top/bottom edge (A4); 2 mm from all edges (A3 Wide)  
Media type: Plain paper (64-90 g/m²), thick paper 1 (91-150 g/m²), thick paper 2 (151 -210 g/m²), thick paper 3 (211-256 g/m²), recycled paper (64-90 g/m²), transparency, letterhead, envelope, labels, postcard, glossy paper  
Banner tray: up to 297 x 1200 mm (optional)

### Physical

Dimensions: (D) 606 mm x (W) 648 mm x (H) 477 mm  
Weight: without consumables 51 kg, approx. 80 kg shipped with consumables

Dealer address

### Belgium and Luxembourg

Tel: (+32) 2 717 09 89 (French)  
(+32) 2 717 09 91 (Dutch)  
Fax: (+32) 2 717 09 26

### Denmark

Tel: (+45) 72 21 21 21  
Fax: (+45) 72 21 21 22

### Finland

Tel: (+358) 9 4 20 61  
Fax: (+358) 9 4 20 62 00

### France

Tel: (+33) 01 41 07 93 93  
Fax: (+33) 01 40 83 01 10

### Germany and Austria

Tel: (+49) 89 63 02 67 0  
Fax: (+49) 89 63 02 67-67

### Italy

Tel: (+39) 02 39 011 1  
Fax: (+39) 02 39 011 219

### Middle East

Tel: (+97) 1 4 335 2574  
Fax: (+97) 1 4 335 2573

### Norway

Tel: (+47) 2 27 89 800  
Fax: (+47) 2 27 89 850

### Portugal

Tel: (+351) 219 42 89 00  
Fax: (+351) 219 42 89

### Electrical

Power requirements (220V/240V): VAC ±10%, 50/60 ±3% Hz  
Power consumption: max 1450W, average during printing 700W or less, standby <120W or less  
Energy save: <28W or less

### Environmental

Temperature requirements: 10° to 35°C (operating), 0° to 35° (non-operating)  
Humidity: 15% to 85% RH (operating), 10% to 85% RH (non-operating)  
Noise levels: <52dB or less (printing), <40dB or less (standby)

### Regulatory/Safety Conformity

UL, cUL, FCC-B, DOC, VCCI, CE Marking, C-Tick, CDRH

### Consumables¹

Printer ships with installed cyan, magenta, yellow and black toner (yield up to 3,000 pages)  
Printer ships with installed cyan, magenta, yellow and black imaging unit (yield cyan, magenta and yellow up to 30,000 pages and black up to 50,000 pages)  
Replacement toner cartridge:  
High capacity: Cyan, magenta, yellow (yield up to 12,000 pages), black (yield up to 15,000 pages)  
Waste toner box: Yield up to 18,000 pages

### Warranty period and conditions

1 year PROTECT.REPAIR on-site warranty (within EU; local law applies).

¹The stated life expectancy of each consumable in the printer is based on printing under specific operating conditions such as page coverage for a particular page size (5% coverage of A4). The actual consumables life will vary depending on the use and other printing variables including page coverage, page size, media type, continuous or intermittent printing, ambient temperature and humidity. For more information about toner life expectancy visit <http://printer.konicaminoltaeurope.com/tco>

²The addition of some options, in some combinations may cause the product to become non-compliant. Energy Star compliance does not represent an EPA endorsement of any product or service. Specifications and accessories are based on the information available at the time of printing, and are subject to change without notice. For the latest information, please visit [www.konicaminoltaeurope.com/printer](http://www.konicaminoltaeurope.com/printer)

### Model Specific Features

Print Speed:	25 ppm A4 and 13 ppm A3 colour + monochrome
Resolution:	Up to 600 x 600 x 4-bit Photo ART™ contone
Memory (RAM):	Standard 256 MB (max. 1024 MB)
100-sheet multi-purpose tray:	Standard
250-sheet cassette:	Standard, up to A3 Wide
500-sheet lower feeder:	Optional, up to A3 Wide
Automatic duplex:	Optional
USB 2.0 (High-Speed) Interface:	Standard
Gigabit Ethernet:	Standard
PictBridge:	Standard
CF card slot:	Standard
Banner tray:	Optional
Cabinet:	Optional
Caster base:	Optional
Hard disk kit:	Optional

©2006 KONICA MINOLTA All rights reserved. Specifications are subject to change without notice. The KONICA MINOLTA logo, magicolor, Emperon, Simitri and Photo Art are trademarks or registered trademarks of KONICA MINOLTA. All other trademarks or registered trademarks are the property of their respective owners.  
Websites:  
[www.konicaminoltaeurope.com/printer](http://www.konicaminoltaeurope.com/printer)  
[www.q-shop.com](http://www.q-shop.com)

Part Number: 1730983-001



### Spain

Tel: (+34) 91 327 73 00  
Fax: (+34) 91 327 09 00

### Sweden

Tel: (+46) 8 622 51 00  
Fax: (+46) 8 622 51 24

### Switzerland

Tel: (+41) 43 322 90 20  
Fax: (+41) 43 322 90 29

### The Netherlands

Tel: (+31) 30 248 1200  
Fax: (+31) 30 248 1211

### United Kingdom

Tel: (+44) 1784 442255  
Fax: (+44) 1784 461641

### Ireland

Tel: (+44) 1800 23 00 00  
Fax: (+44) 014 62 26 45

### For all other countries

**Konica Minolta**  
**Printing Solutions**  
**Europe B.V.**  
Tel: (+31) 30 248 1200  
Fax: (+31) 30 248 1211