
PagePro™ 1350EN

Reference Guide

4136-9563-00A

1800814-001A

Copyright Notice

The digitally encoded software and publication included with your printer are Copyrighted © 2006 by KONICA MINOLTA BUSINESS TECHNOLOGIES, INC., Marunouchi Center Building, 1-6-1 Marunouchi, Chiyoda-ku, Tokyo, 100-0005, Japan. All Rights Reserved.

Trademarks

KONICA MINOLTA and the KONICA MINOLTA logo are trademarks or registered trademarks of KONICA MINOLTA HOLDINGS, INC.

PagePro and PageScope are trademarks or registered trademarks of KONICA MINOLTA BUSINESS TECHNOLOGIES, INC.

All other trademarks and registered trademarks are the property of their respective owners.

Notice

KONICA MINOLTA BUSINESS TECHNOLOGIES, INC. reserves the right to make changes to this guide and to the equipment described herein without notice. Considerable effort has been made to ensure that this manual is free of inaccuracies and omissions. However, KONICA MINOLTA BUSINESS TECHNOLOGIES, INC. makes no warranty of any kind including, but not limited to, any implied warranties of merchantability and fitness for a particular purpose with regard to this manual.

KONICA MINOLTA BUSINESS TECHNOLOGIES, INC. assumes no responsibility for, or liability for, errors contained in this manual or for incidental, special, or consequential damages arising out of the furnishing of this manual, or the use of this manual in operating the equipment, or in connection with the performance of the equipment when so operated.

SOFTWARE LICENSE AGREEMENT

This package contains the following materials provided by Konica Minolta Business Technologies, Inc. (KMBT): software included as part of the printing system, the digitally-encoded machine-readable outline data encoded in the special format and in the encrypted form ("Font Programs"), other software which runs on a computer system for use in conjunction with the Printing Software ("Host Software"), and related explanatory written materials ("Documentation"). The term "Software" shall be used to describe Printing Software, Font Programs and/or Host Software and also include any upgrades, modified versions, additions, and copies of the Software.

The Software is being licensed to you under the terms of this Agreement.

KMBT grants to you a non-exclusive sublicense to use the Software and Documentation, provided that you agree to the following:

1. You may use the Printing Software and accompanying Font Programs for imaging to the licensed output device(s), solely for your own internal business purposes.
 2. In addition to the license for Font Programs set forth in Section 1 ("Printing Software") above, you may use Roman Font Programs to reproduce weights, styles, and versions of letters, numerals, characters and symbols ("Typefaces") on the display or monitor for your own internal business purposes.
 3. You may make one backup copy of the Host Software, provided your backup copy is not installed or used on any computer. Notwithstanding the above restrictions, you may install the Host Software on any number of computers solely for use with one or more printing systems running the Printing Software.
 4. You may assign its rights under this Agreement to an assignee of all of Licensee's right and interest to such Software and Documentation ("Assignee") provided you transfer to Assignee all copies of such Software and Documentation Assignee agrees to be bound by all of the terms and conditions of this Agreement.
 5. You agree not to modify, adapt or translate the Software and Documentation.
 6. You agree that you will not attempt to alter, disassemble, decrypt, reverse engineer or decompile the Software.
 7. Title to and ownership of the Software and Documentation and any reproductions thereof shall remain with KMBT and its Licensor.
 8. Trademarks shall be used in accordance with accepted trademark practice, including identification of the trademark owner's name. Trademarks can only be used to identify printed output produced by the Software. Such use of any trademark does not give you any rights of ownership in that trademark.
 9. You may not rent, lease, sublicense, lend or transfer versions or copies of the Software that the Licensee does not use, or Software contained on any unused media, except as part of the permanent transfer of all Software and Documentation as described above.
 10. In no event will KMBT or its licensor be liable to you for any consequential, incidental INDIRECT, PUNITIVE or special damages, including any lost profits or lost saving, even if KMBT has been advised of the possibility of such damages, or for any claim by any third party. KMBT or its licensor disclaims all warranties with regard to the software, express or implied, including, without limitation implied warranties of merchantability, fitness for a particular purpose, title and non-infringement of third party rights. Some states or jurisdictions do not allow the exclusion or limitation of incidental, consequential or special damages, so the above limitations may not apply to you.
-

11. Notice to Government End Users: The Software is a “commercial item,” as that term is defined at 48 C.F.R.2.101, consisting of “commercial computer software” and “commercial computer software documentation,” as such terms are used in 48 C.F.R. 12.212. Consistent with 48 C.F.R. 12.212 and 48 C.F.R. 227.7202-1 through 227.7202-4, all U.S. Government End Users acquire the Software with only those rights set forth herein.
 12. You agree that you will not export the Software in any form in violation of any applicable laws and regulations regarding export control of any countries.
-

Contents

1 Network Printing	2
Network Printing	3
BOOTP	3
DHCP	3
HTTP	4
IPP	4
IPX/SPX	4
LPD/LPR	4
SNMP	4
Port 9100	4
Network Connection	5
Theory	5
Making the Connection	5
Ethernet Interface	5
Using DHCP/BOOTP	6
Using the PCL6 Driver Setup	7
Using the New Printer Wizard	7
Using PageScope Web Connection	10
Using PageScope Network Setup	11
Installing the PCL6 Driver for a network printer	16

Installing missing network components	25
Installing Internet Explorer 6.0 or above for Windows 9X, Windows NT4.0, or Windows Server 2003/XP/2000	25
Installing TCP/IP for Windows 9X	25
Installing Crown Print Monitor+ for Windows 9X	27
Installing the TCP/IP Protocol for Windows NT 4.0	27
Installing the Microsoft TCP/IP Printing for Windows NT 4.0	29
Printing via IPP (Internet Printing Protocol) – Windows Server 2003/XP/2000	32
Adding an IPP Port using Add Printer Wizard	32
Resetting the printer to factory defaults	34
Troubleshooting	35
2 Using PageScope Web Connection	36
About PageScope Web Connection	37
Display Language	37
Requirements	37
Setting Up the Printer Web Page	38
Determining the Printer Name	38
Setting Up Your Browser Software	38
Internet Explorer (version 6.0 for Windows)	39
Netscape Navigator (version 7.1)	40
Understanding the PageScope Web Connection Window	41
Navigation	41
Current Status	42
User Mode	42
Administrator Mode	42
Viewing Printer Status	44
System Page	44
Summary (shown previous)	45
Device Information	46
Detail	47
Counter	53
Online Assistance	54
Job Page	55
Active Job List (shown above)	55
Done Job List	56
Done Job List (Detail)	57
Print Page	58
Default Settings	58
PCL Font List	62
Report Types	63
Configuring the Printer	64
System Page	64
Date/Time	64
Admin Password	66

- Device Information 67
- ROM Version 70
- Online Assistance 71
- Maintenance 73
- Print Page 75
- Interfaces 75
- Default Settings 76
- PCL Font List 84
- Network Page 85
- TCP/IP(shown above) 85
- NetWare 87
- IPP 90
- FTP Server 94
- SNMP 95

- A Appendix 96**
 - Font Information 97**

Network Printing

1

Network Printing

Network printing terms are described below.

- BOOTP
- DHCP
- HTTP
- IPP
- IPX/SPX
- LPD/LPR
- SNMP
- Port9100

This chapter contains descriptions on the network printing terms and the IPP printing methods.

BOOTP

BOOTP (Bootstrap Protocol) is an Internet protocol that enables a diskless workstation to discover (1) its own IP address, (2) the IP address of a BOOTP server on the network, and (3) a file that can be loaded into memory to boot the workstation. This enables the workstation to boot without requiring a hard or floppy disk drive.

DHCP

DHCP (Dynamic Host Configuration Protocol) is a protocol for assigning dynamic IP addresses to devices on a network. With dynamic addressing, a device can have a different IP address every time it connects to the network. In some systems, the device's IP address can even change while it is still connected. DHCP also supports a mix of static and dynamic IP addresses. Dynamic addressing simplifies network administration because the software keeps track of IP addresses rather than requiring an administrator to manage the task. This means that a new computer can be added to a network without the hassle of manually assigning it a unique IP address.

HTTP

HTTP (HyperText Transfer Protocol) is the underlying protocol used by the World Wide Web. It defines how messages are formatted and transmitted, and what actions web servers and browsers should take in response to various commands. For example, when you enter a URL in your browser, this actually sends an HTTP command to the Web server directing it to fetch and transmit the requested web page.

IPP

IPP (Internet Printing Protocol) is a protocol for end users' most common printing situations over the Internet. It allows users to find out about a printer's capabilities, submit print jobs to a printer, determine the status of the printer or print job, and cancel a previously submitted print job.

For more information on using IPP, See "Printing via IPP (Internet Printing Protocol) – Windows Server 2003/XP/2000" on page 32.

IPX/SPX

IPX/SPX (Internetwork Packet Exchange/Sequenced Packet Exchange) is a networking protocol developed by Novell. It was used mainly in Netware environments as the general LAN protocol, where TCP/IP has become wide-spread.

LPD/LPR

LPD/LPR (Line Printer Daemon/Line Printer Request) is a platform-independent printing protocol that runs over TCP/IP. Originally implemented for BSD UNIX, its use has spread into the desktop world and is now an industry standard.

SNMP

SNMP (Simple Network Management Protocol) is actually a set of protocols for managing complex networks. SNMP works by sending messages to different parts of a network. SNMP-compliant devices, called agents, store data about themselves in Management Information Bases (MIBs) and return this data to the SNMP requesters.

Port 9100

When printing through a network, TCP/IP port number 9100 can be used to send raw data.

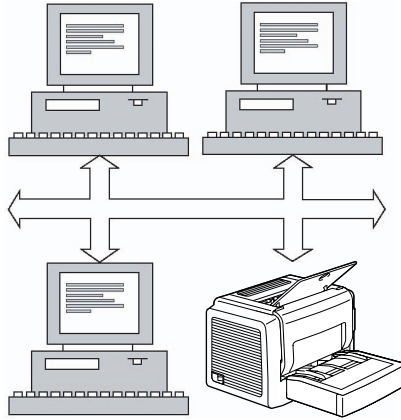
Network Connection

Theory

To connect your printer in a TCP/IP network environment, you must make sure that the internal network addresses in the printer have been set. This chapter explains how to setup the network connection to your printer.



In many cases, you have to enter only a unique IP address. However, you may also have to enter a subnet mask and/or a gateway (router) address, depending on your network configuration requirements.



Making the Connection

Ethernet Interface

An RJ45 connector can be used as the Ethernet interface for this printer.

When connecting your printer to an Ethernet network, the tasks you perform depend on how you plan to set the printer's IP (Internet Protocol) address, Subnet Mask and Gateway:

- **IP Address**—A unique identifier for each device on a TCP/IP network.
- **Subnet Mask**—A filter used to determine what subnet an IP address belongs to.
- **Gateway**—A node on a network that serves as an entrance to another network.

Printers are shipped with DHCP/BOOTP enabled in order to insure easy automatic connection in most network environments. However for printing, the use of a static IP address is preferred and you will need to change the automatically assigned IP address for a static IP address. You can do this by several different ways. Each is explained in detail in the following sections.

- Using DHCP/BOOTP
- Using the PCL6 Driver Setup
- Using the New Printer Wizard

- Using PageScope Web Connection
- Using PageScope Network Setup



CAUTION

You should always notify your network's administrator before changing the printer's IP address. Since the IP address for each PC and printer on your network must be unique, you need to make sure it doesn't conflict with any other IP address or your network or any attached network.

Using DHCP/BOOTP

If your network supports DHCP (Dynamic Host Configuration Protocol) or BOOTP (Bootstrap Protocol), the printer's IP address will be automatically assigned by the DHCP or BOOTP server when you turn on the printer. (Refer to "Network Printing" on page 3 for a description of DHCP and BOOTP.)



If your printer is not automatically assigned an IP address, verify that DHCP is enabled on the printer.

- 1 Connect your printer to the network.
When using an Ethernet cable, plug the RJ45 connector into the Ethernet interface port of the printer.
- 2 Put paper on the input tray.
- 3 Turn on your PC and printer.
When the green "Ready" indicator is on, print a configuration page to verify that the IP address is set.
- 4 Make sure that
 - the orange "Error" indicator is off.
 - the green "Ready" indicator is on (but not blinking).
- 5 Briefly press the cancel button.
- 6 Press the cancel button two more times.
 - A configuration page is printed.
- 7 Check the INTERFACE section of the Configuration Page and make sure of the following:
 - DHCP/BOOTP is On
 - IP Address is different from the default 192.168.1.2



If the configuration page was printed immediately after the green “Ready” indicator lit, the updated IP address information may not be applied and all IP Address, Subnet Mask and Default Router will show “Initializing...”. In such a case, please wait a few minutes and print a new configuration page.



If DHCP/BOOTP is On, but IP Address shows 192.168.1.2, this means that your printer is not connected correctly to the network, or that there is no DHCP or BOOTP server available to assign an IP address to your printer. In such a case, please use any of the other methods described in the following sections to assign a valid static IP address to your printer before installing the printer driver.



If DHCP/BOOTP is Off, this probably mean that your printer has already been assigned a static IP address and if this address is correct, you can proceed directly with the PCL6 Driver Setup. If this is not the case, and you cannot communicate with the printer, please reset the printer to factory default as explained in “Resetting the printer to factory defaults” on page 34.

Using the PCL6 Driver Setup

During the PCL6 Driver Setup the New Printer Wizard will be run automatically. For more information, see “Installing the PCL6 Driver for a network printer” on page 16.

Using the New Printer Wizard

A utility called “New Printer Wizard” is provided on your CD-ROM. This utility allows you to locate your printer on the network, and configure its network settings, as follows:

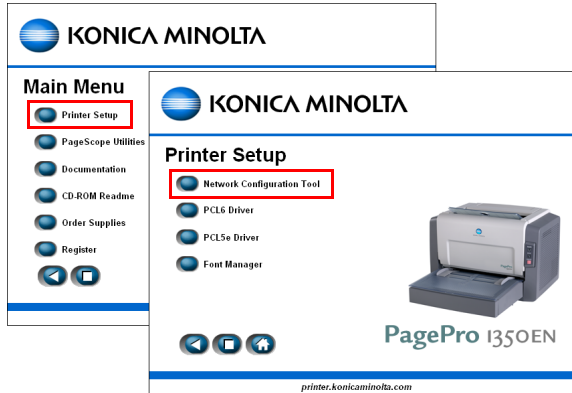
1 Connect your printer to the network.



When using an Ethernet cable, plug the RJ45 connector into the Ethernet interface port of the printer.

2 Turn on your PC and printer.

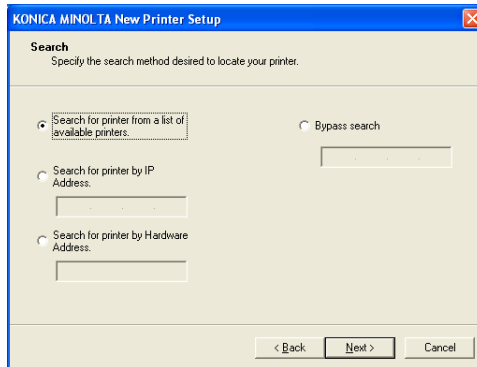
Wait until the green “Ready” indicator is on.

- 3 Insert the CD-ROM that shipped with your printer and from the CD-ROM menus, select **Printer Setup** then **Network Configuration Tool**.



-  During installation of the PCL6 Driver, New Printer Setup Wizard will be run automatically by the PCL6 Setup program.
-  If needed, you may also start New Printer Setup Wizard manually from the CD-ROM directory **InstallEnglish** and run **KMNPW.EXE**.

- 4 Select a search method then choose **Next**.

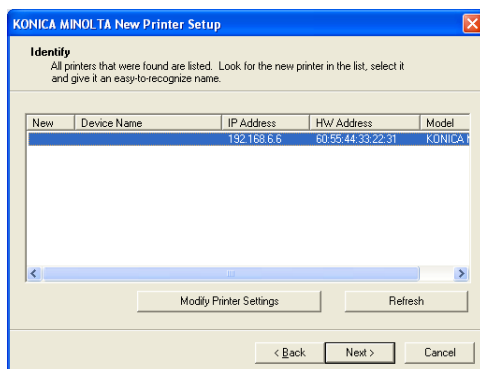


5 Windows XP Service Pack 2 only:

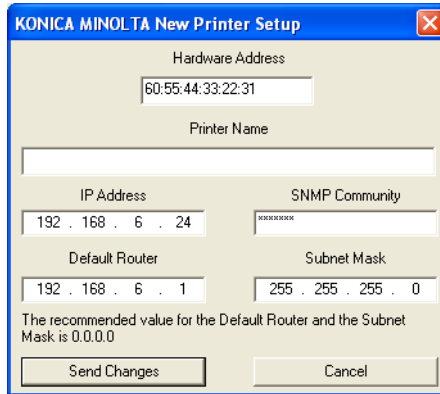
If a Windows Security Alert pops up, choose **Unblock** to allow the program to run.



6 From the list of available KONICA MINOLTA printers, select your printer then choose **Modify Printer Settings**.



- 7 In the modify screen, enter the desired IP Address, Default Router and Subnet Mask then choose **Send Changes**.



KONICA MINOLTA New Printer Setup

Hardware Address
60:55:44:33:22:31

Printer Name

IP Address: 192 . 168 . 6 . 24

SNMP Community: *****

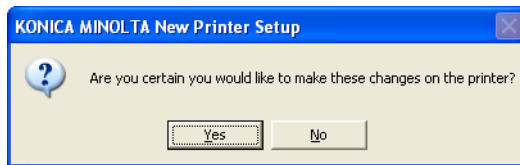
Default Router: 192 . 168 . 6 . 1

Subnet Mask: 255 . 255 . 255 . 0

The recommended value for the Default Router and the Subnet Mask is 0.0.0.0

Send Changes Cancel

- 8 Confirm that you want to make these changes to the printer by choosing **Yes**.

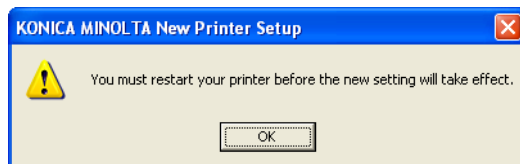


KONICA MINOLTA New Printer Setup

Are you certain you would like to make these changes on the printer?

Yes No

- 9 Make sure you restart your printer before continuing and choosing **OK**.



KONICA MINOLTA New Printer Setup

You must restart your printer before the new setting will take effect.

OK

Using PageScope Web Connection

You may also manually change the printer's IP address, subnet mask, and gateway by using PageScope Web Connection (See chapter 2, "Using PageScope Web Connection" for more information.)

Using PageScope Network Setup

You may also manually change the printer's IP address, subnet mask, and gateway by using PageScope Network Setup.

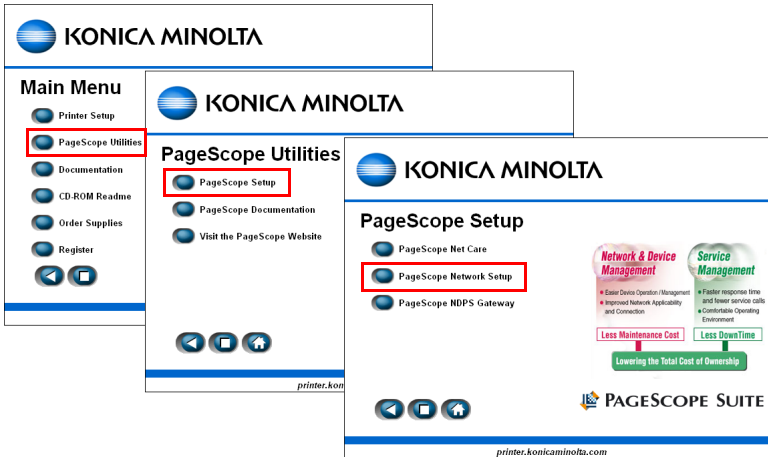
- 1 Connect your printer to the network.

When using an Ethernet cable, plug the RJ45 connector into the Ethernet interface port of the printer.

- 2 Turn on your PC and printer.

Wait until the green "Ready" indicator is on.

- 3 Insert the CD-ROM that shipped with your printer and install PageScope Network Setup from the CD-ROM menus, by selecting **PageScope Utilities**, **PageScope Setup** then **PageScope Network Setup**.



- 4 Once installed, start the PageScope Network Setup utility. (Click **start**, select **Program**, **KONICA MINOLTA**, **PageScope Network Setup** then **PageScope Network Setup**)

5 Windows XP Service Pack 2 only:

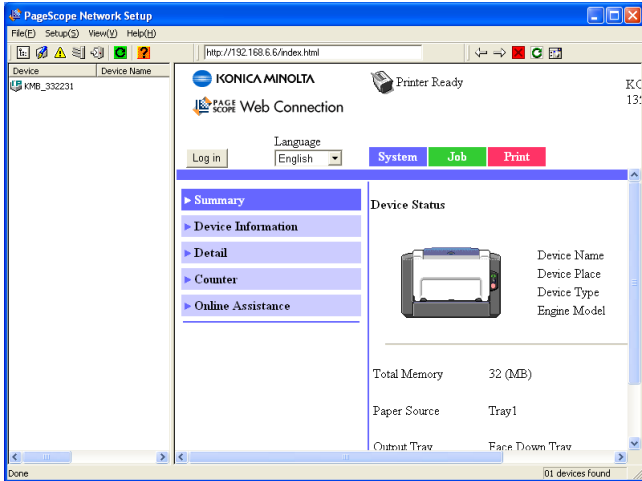
If a Windows Security Alert pops up, choose **Unblock** to allow the program to run.



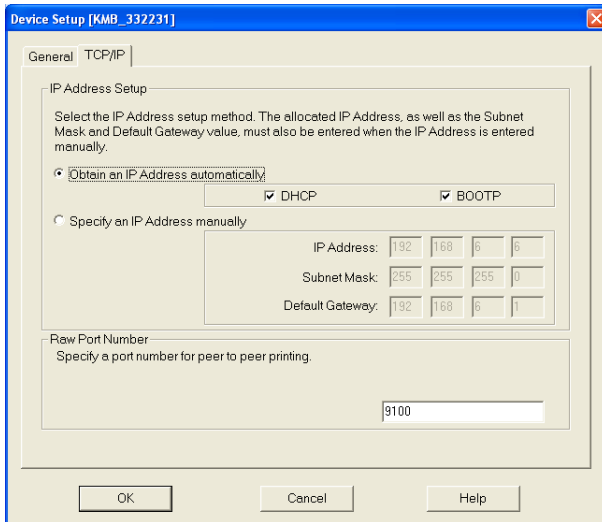
6 The PageScope Network Setup Utility is password protected. Enter the default password: **admin** then choose **OK**.



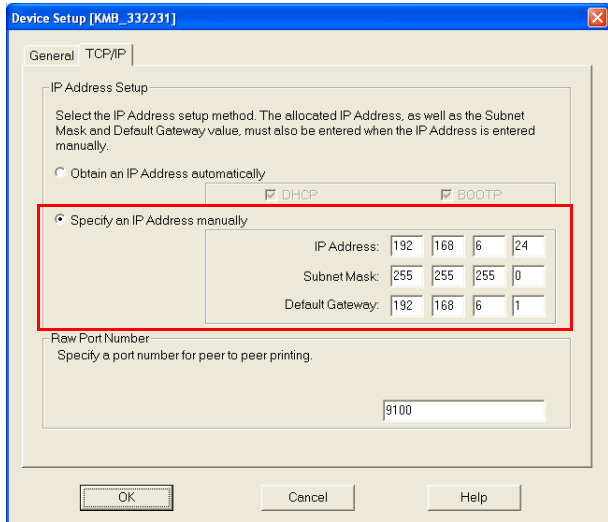
- 7 The PageScope Network Setup Utility will find and display all KONICA MINOLTA printers on your network. Double-Click on your printer.



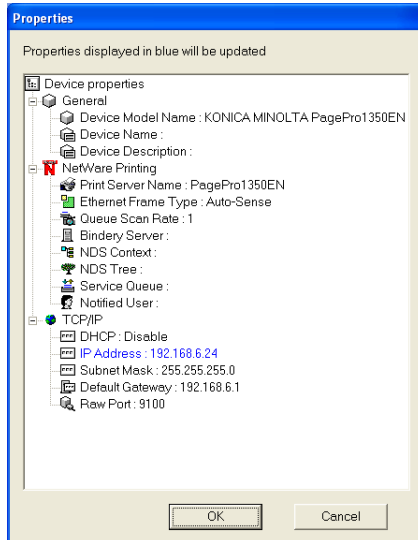
- 8 In the Device Setup screen, select the TCP/IP tab.



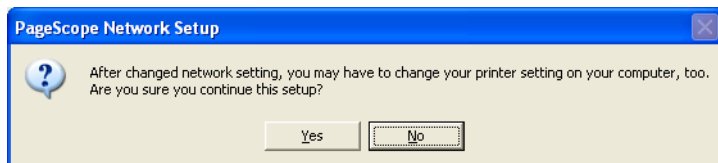
- 9 Select **Specify an IP Address manually**, enter the IP Address, Subnet Mask and Default Gateway you wish to assign to the printer, then choose **OK**.



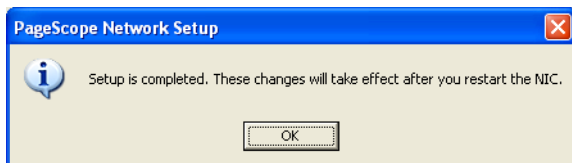
- 10 Verify that the settings are correct then choose **OK** again.



- 11 Confirm that you want to make these changes to the printer by choosing **Yes**.



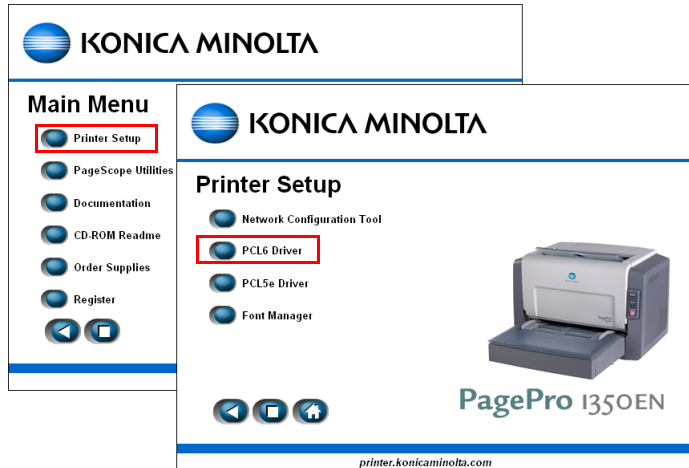
- 12 Make sure to restart your printer before continuing and choosing **OK**.



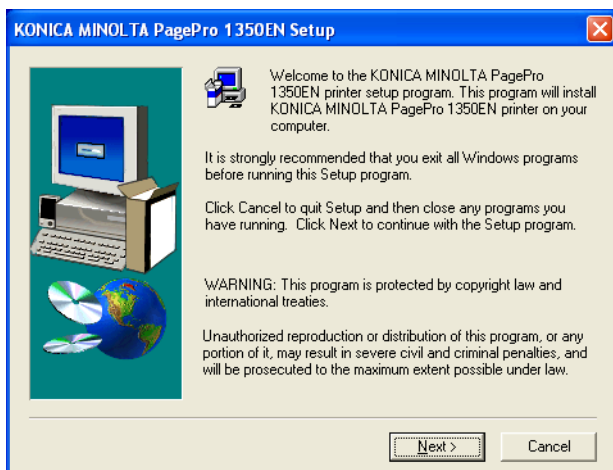
Installing the PCL6 Driver for a network printer

To install the PCL6 driver for your network printer, please follow these steps:

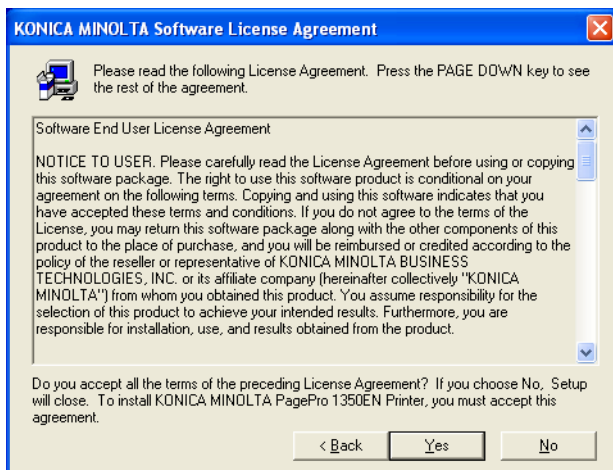
- 1 Connect your printer to the network.
When using an Ethernet cable, plug the RJ45 connector into the Ethernet interface port of the printer.
- 2 Turn on your PC and printer.
Wait until the green "Ready" indicator is on.
- 3 Insert the CD-ROM that shipped with your printer and from the CD-ROM menus, select **Printer Setup** then **PCL6 Driver**.



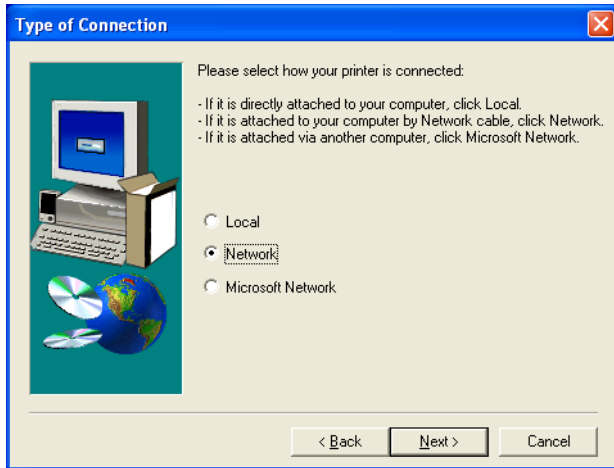
4 Choose **Next** on the Welcome screen.



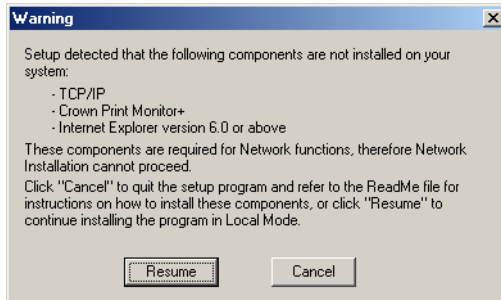
5 Check the License Agreement then choose **Yes** to accept.



6 Select **Network** type of connection then choose **Next**.

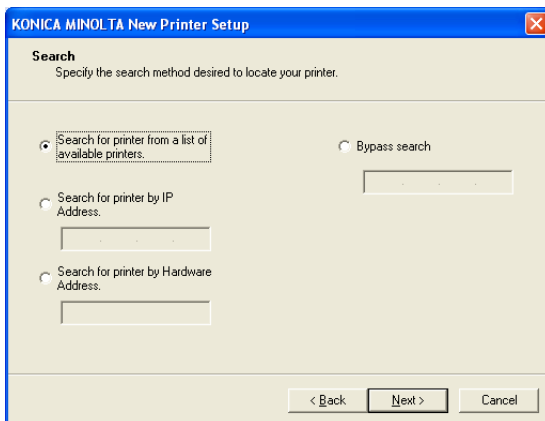


Before proceeding, Setup will check that all necessary network components are installed on your computer. If it was not the case, you would receive a warning message such as following:



In such a case, cancel the current installation and refer to the corresponding chapter in the "Installing missing network components" section. Once the missing component has been installed, you can resume the PCL6 Driver Setup.

7 Select a search method then choose **Next**.

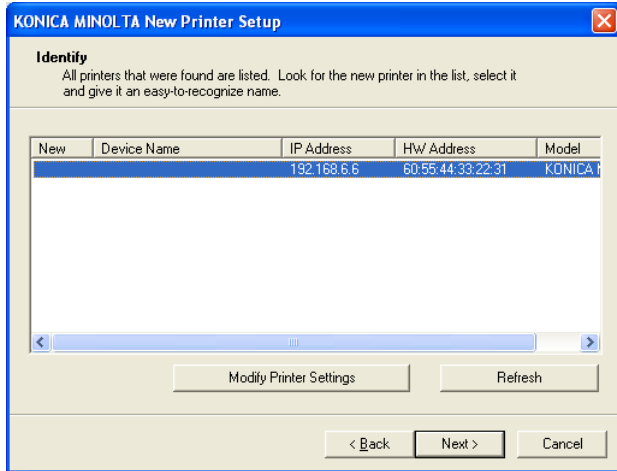


8 Windows XP Service Pack 2 only:

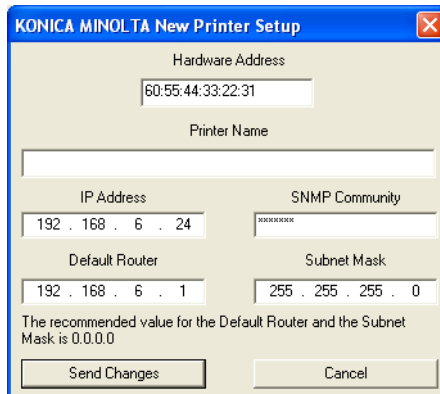
*If a Windows Security Alert pops up, choose **Unblock** to allow the program to run.*



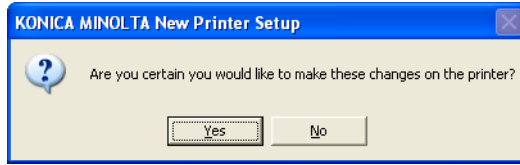
9 Find your printer in the list of available KONICA MINOLTA printers.



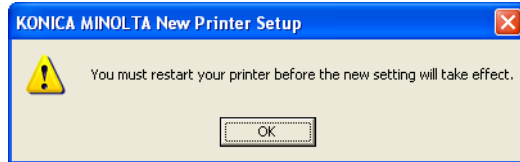
- 10 Select your printer then check the IP address shown:
- If the IP address is already correct, choose **Next** and proceed directly to step 14.
 - If the IP address needs to be modified, choose **Modify Printer Settings** and continue to step 11.
- 11 In the modify screen, enter the desired IP Address, Default Router and Subnet Mask then choose **Send Changes**.



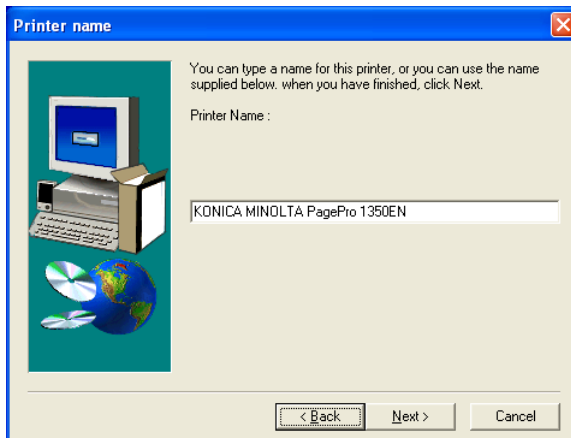
- 12 Confirm that you want to make these changes to the printer by choosing **Yes**.



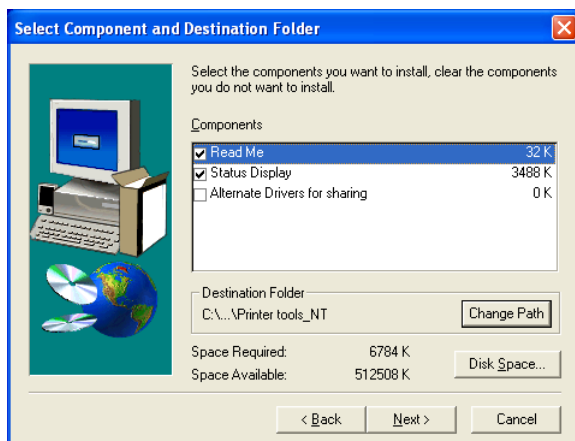
- 13 Make sure you restart your printer before continuing and choosing **OK**.



- 14 Rename the printer if needed then choose **Next**.

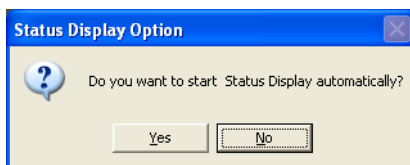


15 Choose which components you wish to install then choose **Next**.

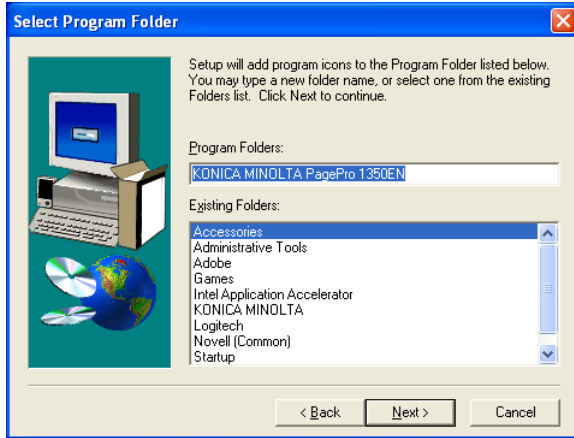


In case this printer driver will be shared with other users using a different Operating system than yours, select Alternate Driver for sharing.

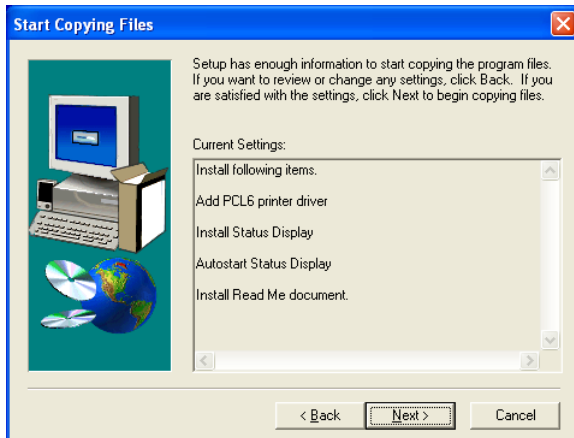
16 If you want the printer Status Display (utility monitoring the printer status) to be started up automatically when you start up your PC, choose **Yes** in the screen below. Otherwise choose No if you prefer to start up the Status Display manually.



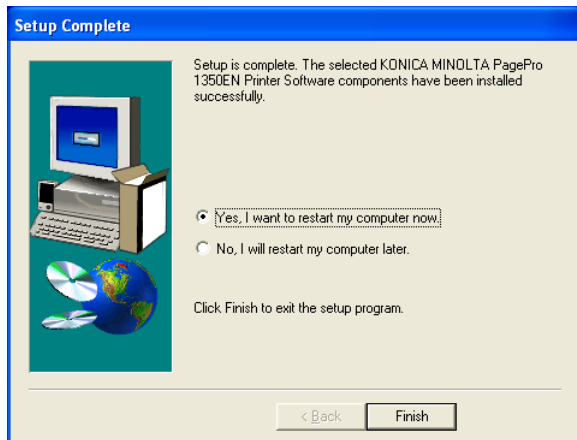
- 17 Choose in which Program Folder you want Setup to add the program icons then choose **Next**.



- 18 Confirm the PCL6 driver Setup settings then choose **Next**.

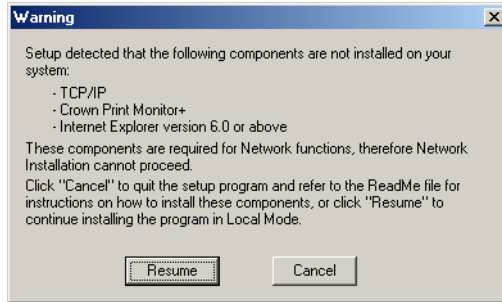


19 Once installed, you must restart your computer.



Installing missing network components

During installation the PCL6 Driver Setup will check that that all necessary network components are installed on your computer. If it was not the case, you would receive a warning message such as following:



In such a case, cancel the current installation and check the following sections for instructions on how to install the missing component. Once the missing component has been installed, you can resume the PCL6 Driver Setup.

Installing Internet Explorer 6.0 or above for Windows 9X, Windows NT4.0, or Windows Server 2003/XP/2000

If you receive a warning that Internet Explorer version 6.0 or above is not installed while attempting a Network Installation of the printer, please first install the latest version of Microsoft Internet Explorer as follows:

- 1 Cancel the PCL6 Driver Setup program.
- 2 Exit the CD-ROM Installer.
- 3 Download the latest version of Microsoft Internet Explorer from Microsoft Website and install on your computer.
- 4 Once completed, resume the PCL6 Driver Setup.



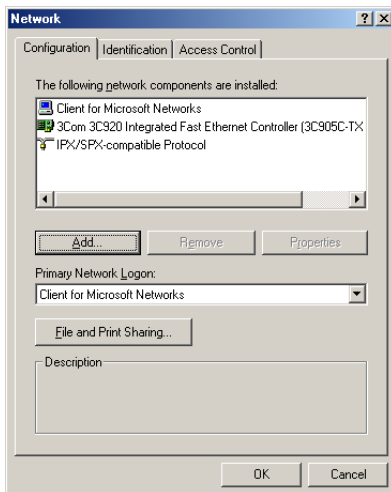
Please refer to Microsoft documentation for full instructions on how to install Internet Explorer on your computer.

Installing TCP/IP for Windows 9X

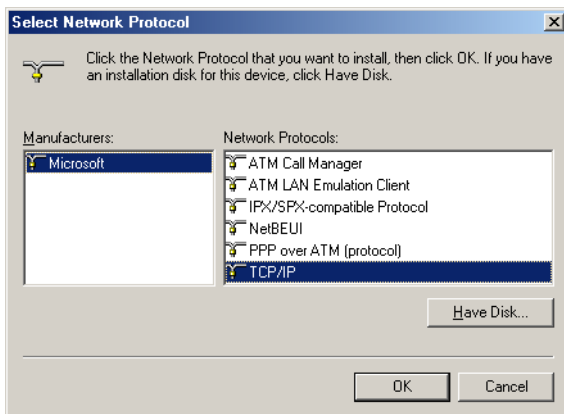
If you receive a warning that TCP/IP is not installed while attempting a Network Installation of the printer, please first install TCP/IP as follows:

- 1 Cancel the PCL6 Driver Setup program.
- 2 Exit the CD-ROM Installer.
- 3 Insert Your Microsoft Windows 98/ME in your CD-ROM Station.

- 4 Click **start**, select **Settings**, then click **Control Panel**.
- 5 Select **Network**, then **Configuration Tab**.



- 6 Add TCP/IP with **Add - Protocol - Microsoft - TCP/IP**.



- 7 Once completed, resume the PCL6 Driver Setup.



Please refer to Microsoft documentation for full instructions on how to install TCP/IP on your computer.

Installing Crown Print Monitor+ for Windows 9X

If you receive a warning that Crown Print Monitor+ is not installed while attempting a Network Installation of the printer, please first install Crown Print Monitor+ as follows:

- 1 Cancel the PCL6 Driver Setup program.
- 2 Exit the CD-ROM Installer.
- 3 Browse to the \Utilities\Crown Print Monitor directory of your CD-ROM and run SETUP.EXE to proceed with the Crown Print Monitor+ installation.
- 4 You only need to install Crown Print Monitor+ and can cancel the Port creation, since this will be done by the PCL6 driver Setup.
- 5 Once completed, resume the PCL6 Driver Setup.



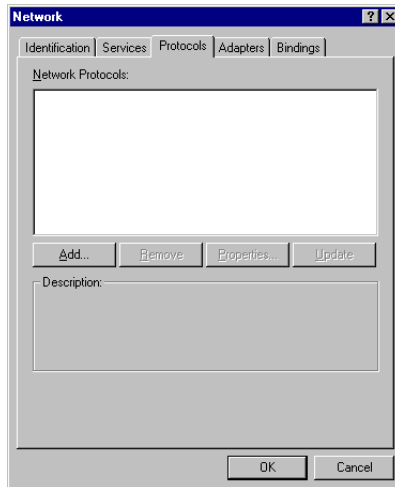
Please refer to the Crown Print Monitor+ Administrator's Guide located in the \manuals\english directory of your CD-ROM as print-mon.pdf for full instructions on how to install Crown Print Monitor+ on your computer.

Installing the TCP/IP Protocol for Windows NT 4.0

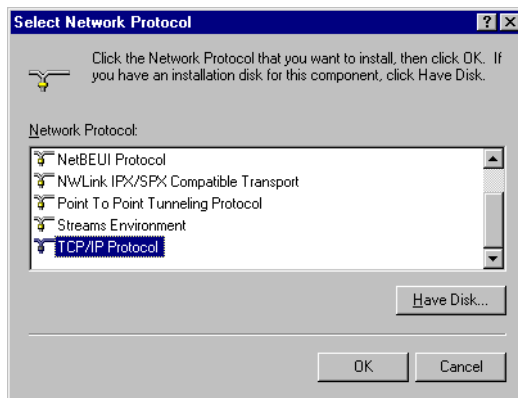
If you receive a warning that TCP/IP Protocol is not installed while attempting a Network Installation of the printer, please first install TCP/IP Protocol as follows:

- 1 Cancel the PCL6 Driver Setup program.
- 2 Exit the CD-ROM Installer.
- 3 Insert your Microsoft Windows NT4 CD-ROM in your CD-ROM Station.

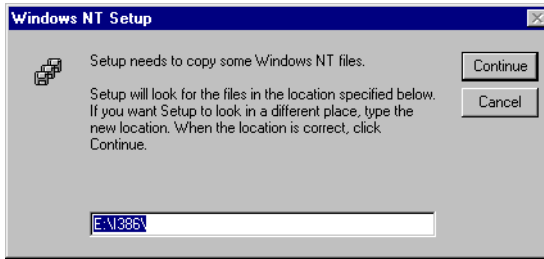
- 4 Right Click the Network Neighborhood on your desktop, select properties, and click the Protocols tab.



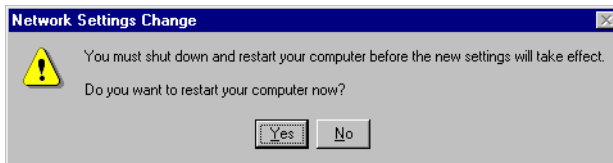
- 5 Select the Add button, highlight TCP/IP Protocol and choose **OK**.



- 6 If prompted by the system, specify the path to the I386 directory on your Microsoft Windows NT4 CD-ROM and choose **Continue**.



- 7 If requested, restart your computer.



- 8 After your computer is restarted, resume the PCL6 Driver Setup.



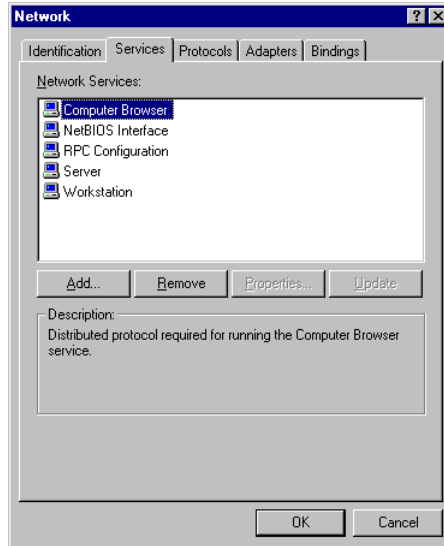
Please refer to Microsoft documentation for full instructions on how to install TCP/IP protocol on your computer.

Installing the Microsoft TCP/IP Printing for Windows NT 4.0

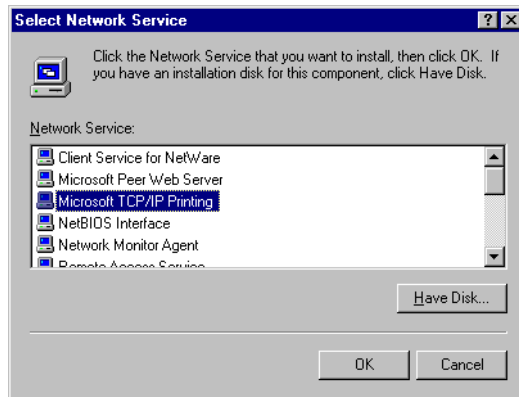
If you receive a warning that Microsoft TCP/IP Printing is not installed while attempting a Network Installation of the printer, please first install Microsoft TCP/IP Printing as follows:

- 1 Cancel the PCL6 Driver Setup program.
- 2 Exit the CD-ROM Installer.
- 3 Insert your Microsoft Windows NT4 CD-ROM in your CD-ROM Station.

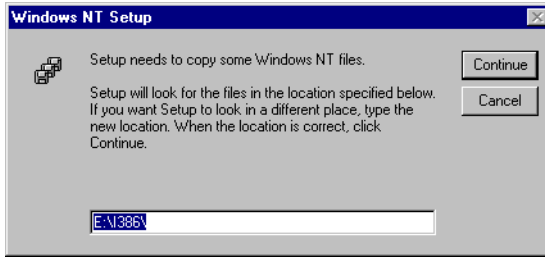
- 4 Right Click the Network Neighborhood on your desktop, select properties, and click the Services tab.



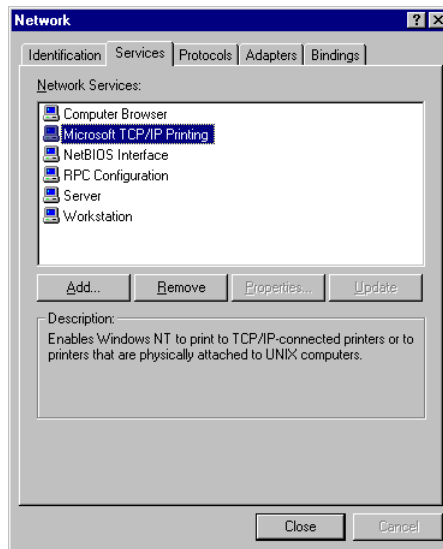
- 5 Select the Add button, highlight Microsoft TCP/IP Printing and choose OK.



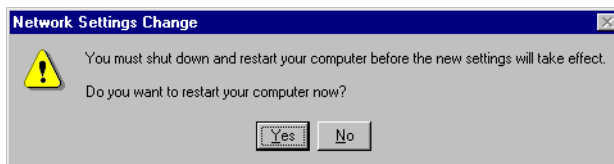
- 6 If prompted by the system, specify the path to the I386 directory on your Microsoft Windows NT4 CD-ROM and choose **Continue**.



- 7 Once installation is completed, verify that the Microsoft TCP/IP Printing service has been added in the list of installed services.



- 8 If requested, restart your computer.



- 9 After your computer is restarted, resume the PCL6 Driver Setup.



Please refer to Microsoft documentation for full instructions on how to install TCP/IP Printing on your computer.

Printing via IPP (Internet Printing Protocol) – Windows Server 2003/XP/2000

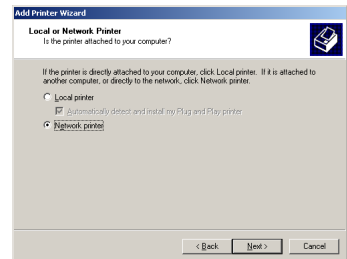
Adding an IPP Port using Add Printer Wizard

- For Windows Server 2003/XP: Click **start**, select **Printers and Faxes**, and then click **Add a Printer**.
 - For Windows 2000: Click **Start**, point to **Settings**, click **Printers**, and then click **Add Printer**.
- 1 In the second dialog box select the **Network Printer** (for Windows Server 2003/XP: **A network printer, or a printer attached to another computer**) radio button and then choose **Next**.

Windows Server 2003/XP



Windows 2000



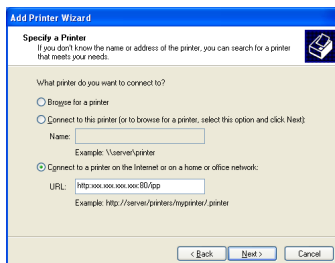
- 2 In the URL field in the next dialog box enter the printer's network path-name in one of the following formats and then choose **Next**:

- `http://ipaddress/ipp`
- `http://ipaddress:80/ipp`
- `http://ipaddress:631/ipp`

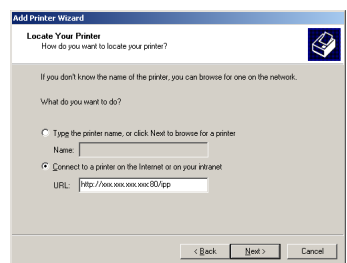


Port 631 is not supported by Windows 2000.

Windows Server 2003/XP



Windows 2000

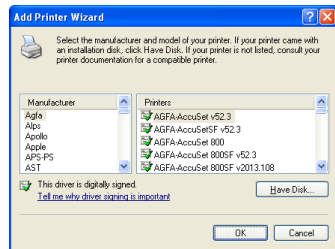


- **Windows Server 2003/XP**—“Windows cannot connect to the printer. Either the printer name was typed incorrectly, or the specified printer has lost its connection to the server. For more information, click **Help**.”
- **Windows 2000**—“Could not connect to the printer. You either entered a printer name that was incorrect or the specified printer is no longer connected to the server. Click **Help** for more information.”

3 Windows Server 2003/XP—Go to step 4.

Windows 2000—If you entered a valid path in the previous step, the following message displays: “The server on which the KONICA MINOLTA PagePro 1350EN printer resides does not have the correct printer driver installed. If you want to install the driver on your local computer, click **OK**.” The reason for this is that you do not yet have a printer driver installed. Choose **OK**.

4 Choose **Have Disk**, locate the directory on the CD-ROM where the printer driver files are located (for example, Drivers\W2K-XP\PCL6\PNP\english), and then choose **OK**.



5 Finish installing the printer driver.

Resetting the printer to factory defaults

If the printer was manually configured to an invalid IP address, or moved to a different network, and communication cannot be established anymore, you might have to reset it to factory settings to re-enable DHCP/BOOTP automatic protocols. In such a case, please follow these steps:

- 1 Turn on your printer.
When the green "Ready" indicator is on, reset the printer to factory default.
- 2 Make sure that
 - the orange "Error" indicator is off.
 - the green "Ready" indicator is on (but not blinking).
- 3 Press the cancel button for more than 20 seconds, until:
 - the orange "Error" indicator and the green "Ready" indicator are slowly blinking alternately (about 1 blink per second).
- 4 Press the cancel button one more time.
 - the green "Ready" indicator blinks for a few seconds, then stops blinking and remains on.
- 5 Restart the printer to use the new (factory) settings.

Troubleshooting

Symptom	Action
The printer cannot be located on the network	Check the DHCP settings, as described in “Using DHCP/BOOTP section”
PCL6 Driver Setup shows a warning that some network components are missing	Install the missing component(s), as described in the “Install missing network components” section.
“Network” option is disabled (Grayed-out) in the Type of Connection screen of the PCL6 Driver Setup.	Go back one step in the PCL6 Driver Setup, then Next again, and check carefully the Warning screen that appears. If you choose to resume without installing the missing network components, the PCL6 Driver Setup will continue in Local mode only.
Some client functions are not available with the Point and Print feature when the server is running Windows XP/Server 2003/2000 and the client computer is running Windows NT 4.0.	Install the printer driver directly on the client computer.

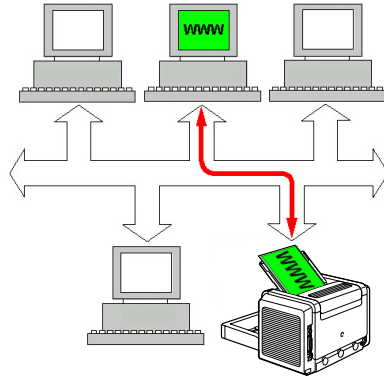
***Using PageScope
Web Connection***

2

About PageScope Web Connection

This chapter provides information on PageScope Web Connection, an HTTP (HyperText Transfer Protocol)-based web page that resides in your printer and that you can access using your Web browser.

This page gives you instant access to printer status and the most frequently used printer configuration options. Anyone on your network can access the printer using their web browser software. In addition, with the proper password, you can change the configuration of the printer.



Users who are not given passwords by the administrator can still view the configuration settings and options but are not able to save or apply changes.

Display Language

The language can be selected from the **Language** drop-down list in PageScope Web Connection.

Requirements

To use PageScope Web Connection, the following is required:

- Windows Server 2003/XP/2000/Me/98SE/NT4.0
- Microsoft Internet Explorer version 5.5 or later
Netscape Navigator version 7.1 or later
- TCP/IP communication software (used by PageScope Web Connection) installed on your PC
- A network, to which both your PC and the printer are connected



You do not need an Internet connection.



You cannot access PageScope Web Connection using a local (USB or Parallel) connection. If your PC and printer are connected via a USB or a Parallel cable, use the Status Display.

Setting Up the Printer Web Page

Setting up the printer web page to run on your network involves two basic steps:

- Determining the name or address of your printer
- Setting up the “no proxy” preferences in your browser software

Determining the Printer Name

The printer web page can be accessed in two ways:



The printer names can also be determined via WINS if the network supports it.

- Through the assigned name of the printer—This name comes from the IP host table (the filename is **hosts**) on the computer system and is usually assigned by the system administrator (for example, PagePro 1350EN). It may be more convenient for you to use the printer name than the IP address.

Location of the Host Table on the PC

- Windows Server 2003/XP \windows\system32\drivers\etc\hosts
 - Windows Me/98SE \windows\hosts
 - Windows 2000/NT4.0 \winnt\system32\drivers\etc\hosts
- Through the printer’s IP address—The IP address of your printer is a unique number and, therefore, may be the preferred identification to enter, especially if you have more printers active in your network. The printer’s IP address is listed on the configuration page.

For details on printing a configuration page, refer to “Using DHCP/BOOTP” on page 6.

Setting Up Your Browser Software

Since your printer resides on your intranet and is not accessible beyond the firewall of your network, you must set up the proper “preferences” in your browser software. Your printer name or IP address must be added to the “no proxy” list in the preferences dialog box of the browser.



You need to do this procedure only once.

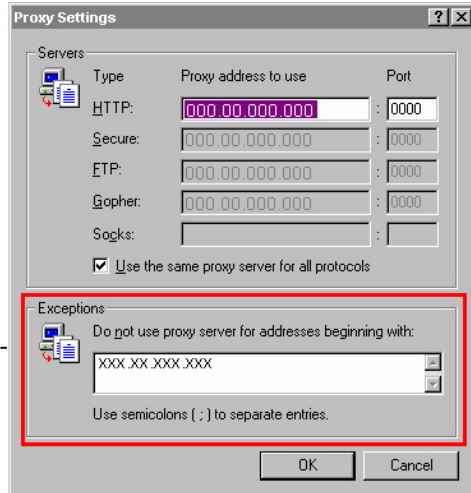
The sample screens below may be different from yours depending on software versions and operating systems in use.



Our examples represent the IP address of the printer with: xxx.xxx.xxx.xxx. Always enter your printer's IP address without leading zeros. For example, 192.168.001.002 should be entered as 192.168.1.2.

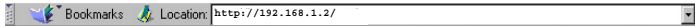
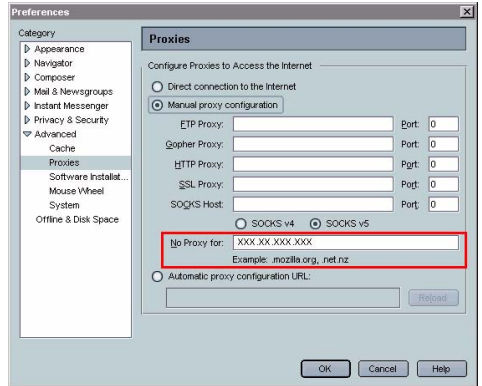
Internet Explorer (version 6.0 for Windows)

- 1 Start Internet Explorer.
- 2 From the **Tools** menu choose **Internet Options**.
- 3 Select the **Connections** tab on the dialog box.
- 4 Choose the **LAN Settings** button to display the Local Area Network (LAN) Settings dialog box.
- 5 Select **Advanced** in Proxy server to open the Proxy Settings dialog box.
- 6 In the **Exceptions** text box, type a comma after the last entry and then type the printer name or the IP address of your printer.
- 7 Choose **OK** three times to return to the main browser window.
- 8 Enter the printer's IP address in the URL Address box to access the printer home page.



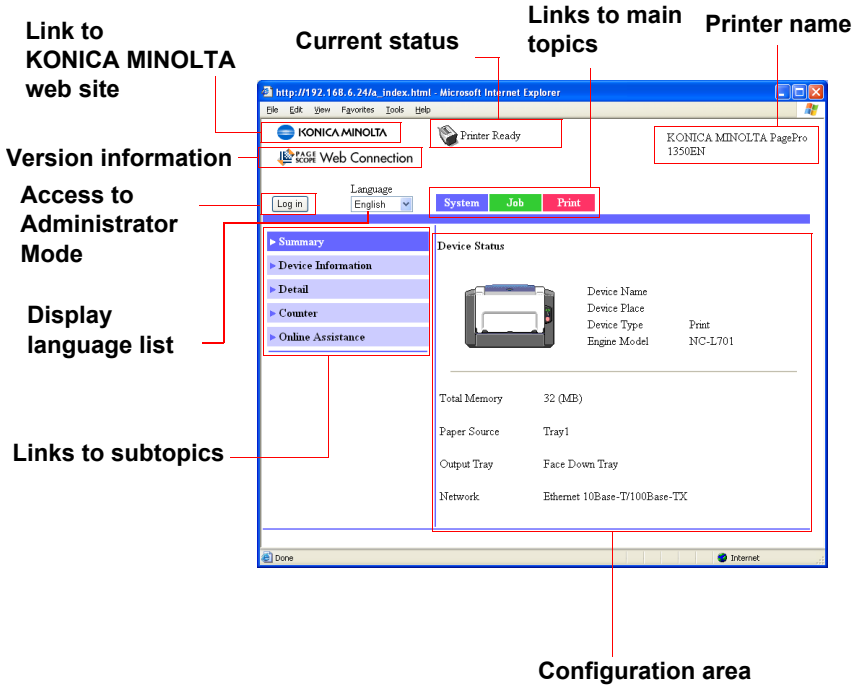
Netscape Navigator (version 7.1)

- 1 Start Netscape Navigator.
- 2 From the **Edit** menu choose **Preferences**.
- 3 Select the **Advanced/Proxies** directory from the left pane of the dialog box.
- 4 Select the **Manual Proxy Configuration** radio button.
- 5 In the **No Proxy for:** text box, type a comma after the last entry, and then type the printer name or the IP address of your printer.
- 6 Choose **OK** to return to the main browser window.
- 7 Enter the printer name or IP address in the URL Location box to access the printer home page.



Understanding the PageScope Web Connection Window

The illustration below identifies the navigation and configuration areas of the windows that you see in PageScope Web Connection.



Navigation

Selecting the main topic and subtopic displays the configuration area for the printer options (parameters) associated with your selections.





To change a current setting, click on the current setting and then select from the available choices or enter the new value.



In order to apply or save any changes made to the configuration settings, PageScope Web Connection must be logged in from Administrator Mode. (For details, refer to "Administrator Mode" on page 42.)

Current Status

The current status of the printer is displayed at the top of all PageScope Web Connection windows. The icon displays the type of status being displayed.

Icon	Status	Description	Examples
	Ready	The printer is online and either ready to print or printing.	Ready Warming up Printing
	Warning	The printer needs attention, but printing continues.	Power Save
	Error	The printer needs attention before printing can resume.	Cover Open
	Fatal	The printer must be rebooted. If that doesn't fix the error, service is required.	Fatal Error XX

User Mode

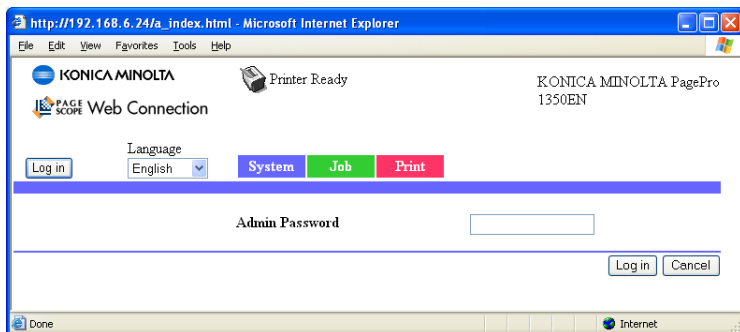
You automatically enter User Mode whenever you enter PageScope Web Connection. In User Mode you can view configuration settings but not change them.

Administrator Mode

In order to change any configuration settings through PageScope Web Connection, you must first enter Administrator Mode:

- 1 Choose the **Log in** button.

- 2 Type the password in the **Admin Password** text box.



*Default password isn't set; however, once you have logged on in Administrator Mode, the password can be specified in the **System/Admin Password** window.*

- 3 Choose the **Log in** button.

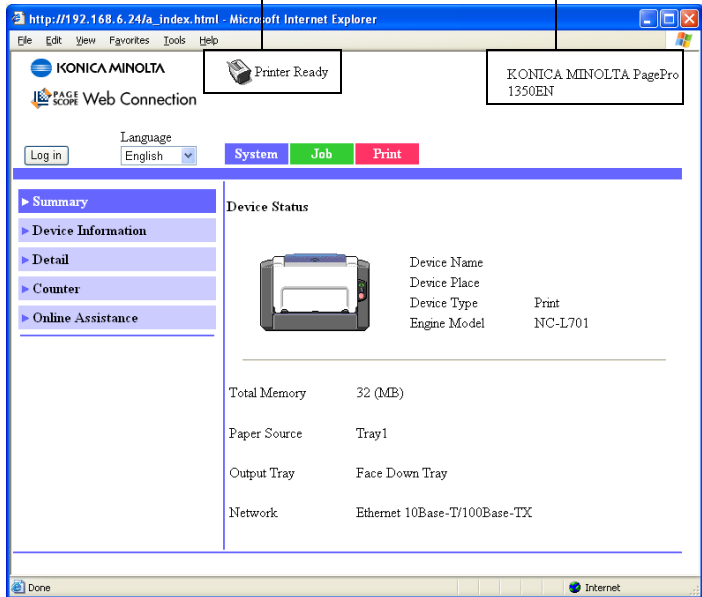
If you type an incorrect password, the following message displays: "Invalid Password Please check your input and try again !" Retype the password.

Viewing Printer Status

System Page

The System page is the starting point for all access to the printer's internal web pages. On this page you find printer status and current configuration settings, printer identification, and links to all other web pages.

Printer status **Printer name**



The screenshot shows a web browser window with the URL `http://192.168.6.24/ia_index.html`. The page header includes the Konica Minolta logo and a 'Printer Ready' status indicator. The printer name is identified as 'KONICA MINOLTA PagePro 1350EN'. A navigation bar contains 'Log in', 'Language' (set to English), and three tabs: 'System' (selected), 'Job', and 'Print'. The main content area is divided into a left sidebar with navigation links (Summary, Device Information, Detail, Counter, Online Assistance) and a right pane titled 'Device Status'. The 'Device Status' section includes a printer icon and the following details:

Device Name	
Device Place	
Device Type	Print
Engine Model	NC-L701


Total Memory	32 (MB)
Paper Source	Tray1
Output Tray	Face Down Tray
Network	Ethernet 10Base-T/100Base-TX



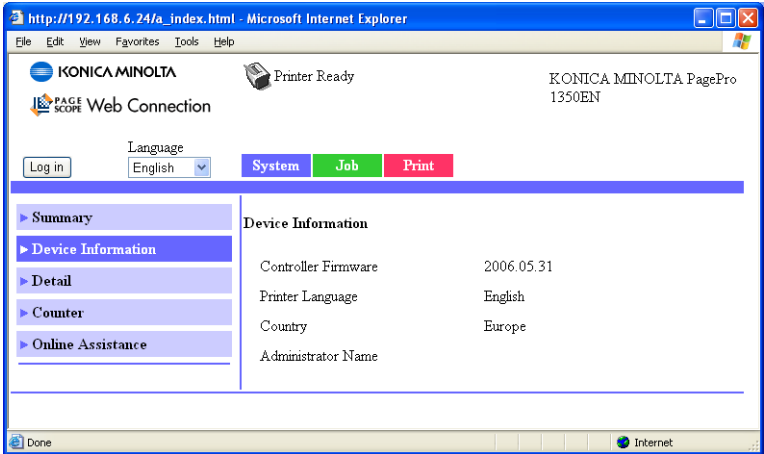
All of the information displayed on the System page is read only.

Summary (shown previous)

The **System/Summary** window provides the following information.

Item	Description
Printer name/status	Shows the name assigned to your printer, and displays the current status of the printer—just as it's displayed on the printer's Status Display message window.  <i>The "Status Display" application allows you to remotely identify possible printer problems, such as out of paper and out of toner.</i>
Device Status (Product image)	Identifies the type of printer that you are browsing. The printer is pictured in the illustration.
Total Memory	Displays the amount of memory installed in the printer.
Paper Source	Identifies the media tray.
Output Tray	Identifies the output tray.
Network	Lists the installed printer interface (Ethernet 10 BaseT/100Base TX).

Device Information

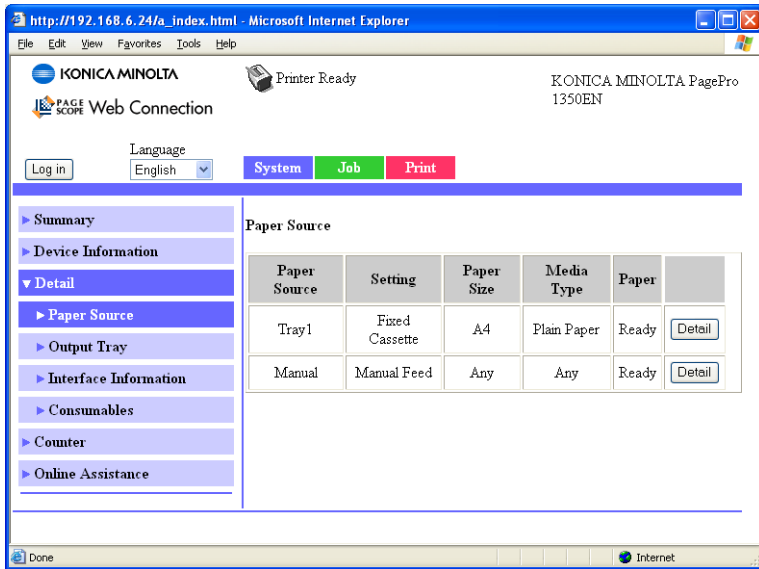


The **System/Device Information** window provides the following information.

Item	Description
Controller Firmware	Identifies the controller firmware version.
Printer Language	Identifies the display language for the PageScope Web Connection and Internal Pages.
Country	Identifies the country specifications of the printer.
Administrator Name	Identifies the name of the administrator of the printer.

Detail

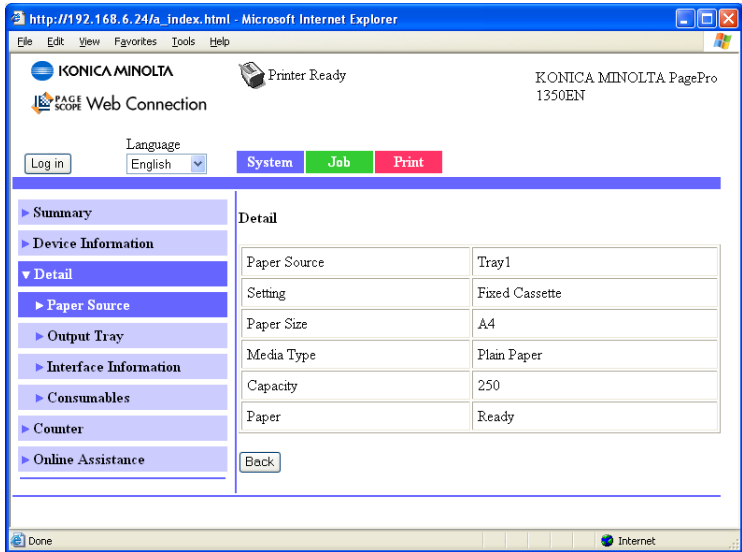
Paper Source



The **System/Detail/Paper Source** window provides the following information.

Item	Description
Paper Source	Identifies Tray1 and the manual feed tray embedded in the printer.
Paper Size	Indicates the size of media loaded in a specific tray.
Media Type	Indicates the type of media loaded in a specific tray.
Paper	Indicates the status (“Ready” or “Empty”) for each tray.
Detail button	Displays detailed information about the media trays.

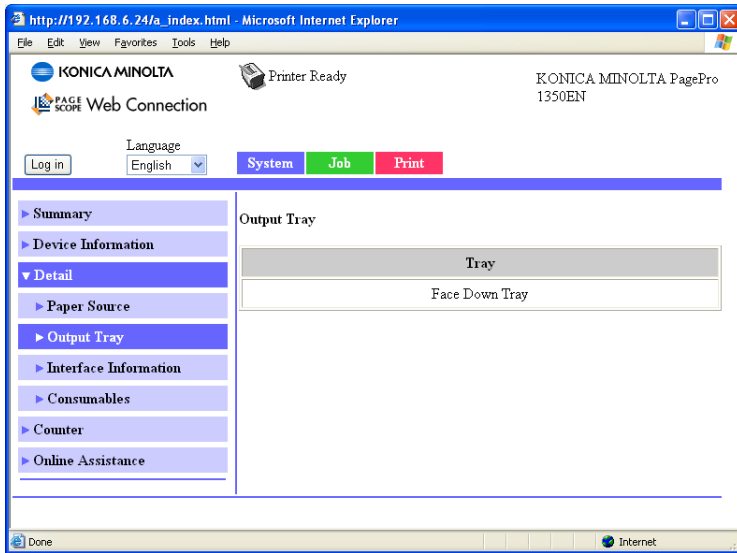
Paper Source (Detail)



The **System/Detail/Paper Source/Detail** window provides the following information.

Item	Description
Paper Source	Displays the names of the media trays.
Setting	Displays the setting of the media tray.
Paper Size	Displays the media sizes.
Media Type	Displays the media types.
Capacity	Displays the maximum capacity for each media tray.
Paper	Displays the amount of media remaining.
Back button	Returns to the previous screen.

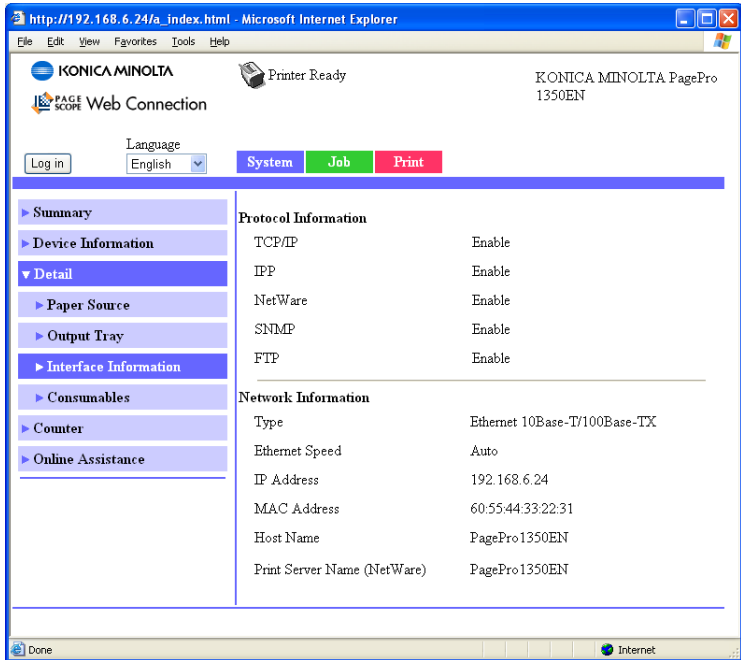
Output Tray



The **System/Detail/Output Tray** window provides the following information.

Item	Description
Tray	Displays the names of the output tray.

Interface Information

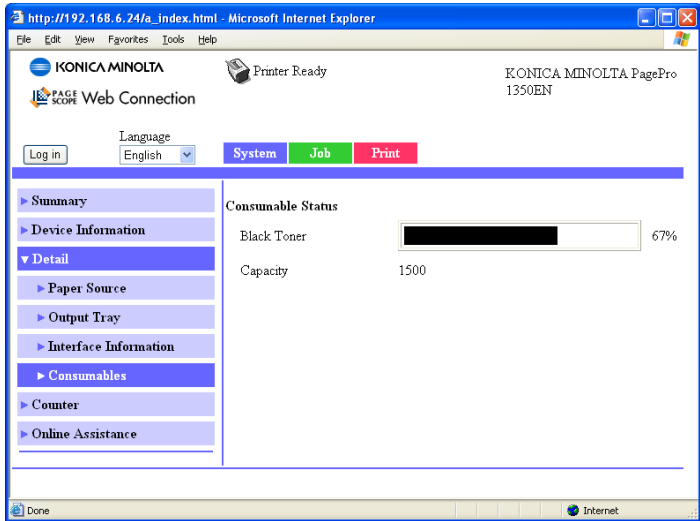


The **System/Detail/Interface Information** window provides the following information.

Item		Description
Protocol Information	TCP/IP	Displays the setting of TCP/IP.
	IPP	If Enable is displayed, IPP is enabled. If Disable is selected, IPP is disabled.
	NetWare	If Enable is displayed, NetWare is enabled. If Disable is selected, NetWare is disabled.
	SNMP	If Enable is displayed, SNMP is enabled. If Disable is selected, SNMP is disabled.
	FTP	If Enable is displayed, FTP is enabled. If Disable is selected, FTP is disabled.

Item		Description
Network Information	Type	Identifies the type of network interface installed on the printer (Ethernet 10Base-T/100Base-TX/1000Base-T).
	Ethernet Speed	Indicates the transmission speed for the network and the transmission method for bi-directional transmission.
	IP Address	Identifies the IP (Internet Protocol) address of the Ethernet interface.
	MAC Address	Identifies the Media Access Control (MAC) address of the Ethernet interface.
	Host Name	Identifies the host name for the printer.
	Print Server Name (NetWare)	Identifies the Print Server Name for the NetWare.

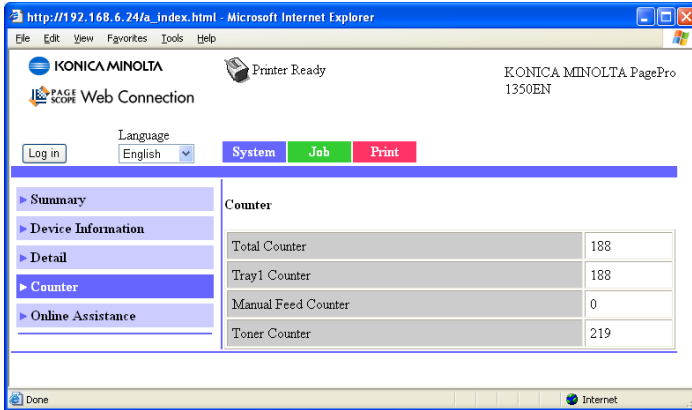
Consumables



The **System/Details/Consumables** window provides the following information:

Item	Description
Consumables	Identifies the type of consumable that is being monitored.
Status	Indicates the remaining life of the consumables. <ul style="list-style-type: none"> ■ Toner Cartridge: Percentage
Capacity	Displays the maximum capacity of the consumables.

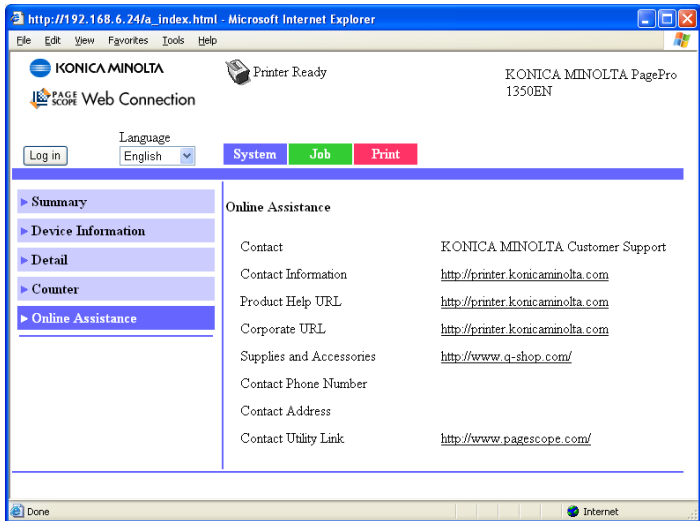
Counter



The **System/Counter** window provides the following information:

Item	Description
Total Counter	This counter indicates the number of pages that have been printed throughout the entire lifetime of the printer.
Tray 1 Counter	This counter indicates the number of pages that have been fed from Tray1.
Manual Feed Counter	This counter indicates the number of pages that have been fed manually.
Toner Counter	This counter indicates the number of pages that have been printed using the currently installed toner cartridge.

Online Assistance

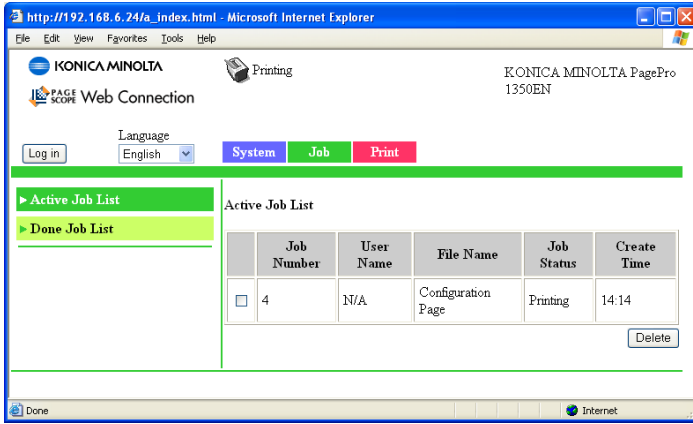


The **System/Online Assistance** window provides the following information:

Item	Description
Contact	Displays the organization that provides assistance with the printer.
Contact Information	Displays the web address for assistance.
Product Help URL	Displays the web address for assistance.
Corporate URL	Displays the KONICA MINOLTA web address.
Supplies and Accessories	Displays the web address where you can order printer supplies and accessories.
Contact Phone Number	Displays the telephone number of the printer administrator.
Contact Address	Displays the e-mail address for support.
Contact Utility Link	Displays a link to the Printer Management Utilities.

Job Page

This page allows you to view the status of current print jobs.

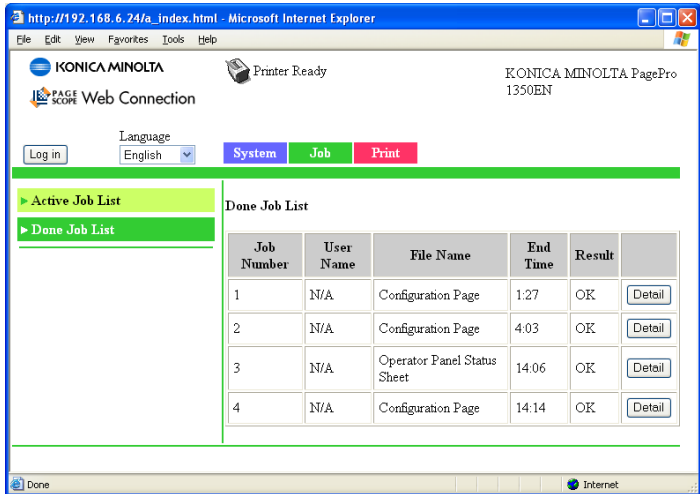


Active Job List (shown above)

The **Job/Active Job List** window provides the following information of the current job:

Item	Description
Job Number	Displays the print job identification number. Each print job that the printer receives is assigned a unique identification number.
User Name	If known, displays the owner of the print job.
File Name	Displays the name of the print file.
Job Status	Displays the current status of the print job (Printing, Cancel).
Create Time	Displays the time that the job was queued.
Delete button	Deletes the print job(s) whose check boxes the left end are checked.

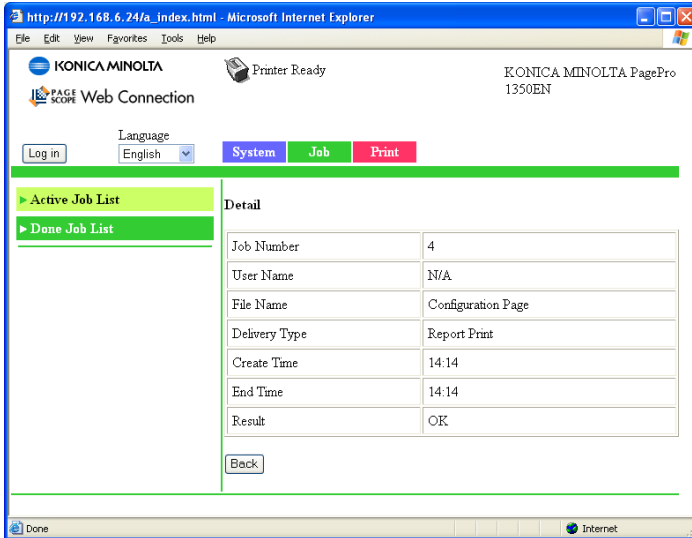
Done Job List



The **Job/Done Job List** window provides the following information for up to 49 print jobs:

Item	Description
Job Number	Displays the print job identification number. Each print job that the printer receives is assigned a Number unique identification number.
User Name	If known, displays the owner of the print job.
File Name	Displays the name of the print file.
End Time	Displays the time that printing finished.
Result	Displays the result of the print job (OK, Error, or Cancelled).
Detail button	Displays a screen containing details.

Done Job List (Detail)

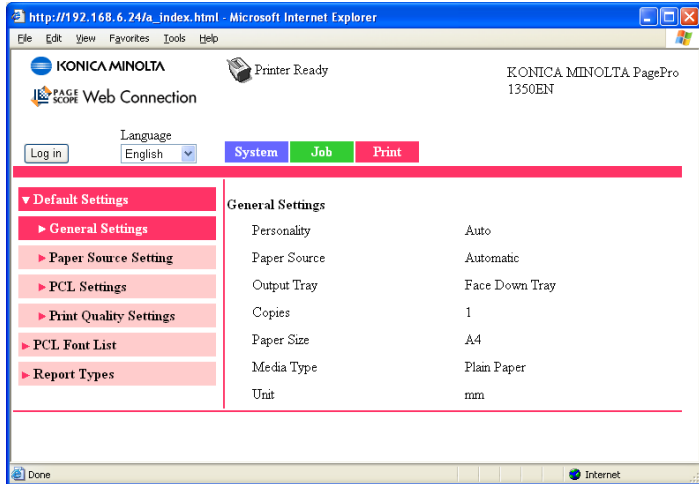


The **Job/Done Job List/Detail** window provides the following information for the selected job:

Item	Description
Job Number	Displays the print job identification number. Each print job that the printer receives is assigned a Number unique identification number.
User Name	If known, displays the owner of the print job.
File Name	Displays the name of the print file.
Delivery Type	Displays the delivery method for the job.
Create Time	Displays the time that the job was queued.
End Time	Displays the time that printing finished.
Result	Displays the result of the print job (OK, Error, or Cancelled).
Back button	Returns to the previous screen.

Print Page

This page allows you to check the settings for printing when there is no driver used and default setting of the printer are used.



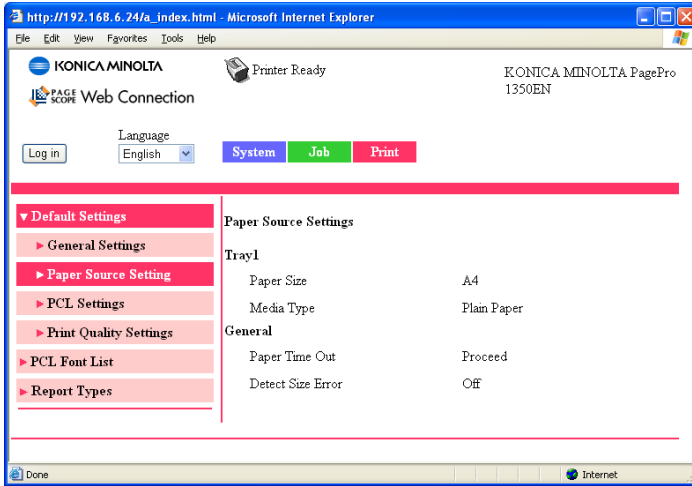
Default Settings

General Settings (shown above)

The **Print/Default Settings/General Settings** window provides the following information.

Item	Description
Personality	Indicates default printer language to be selected.
Paper Source	The media tray that is normally used is indicated.
Output Tray	Displays the name of the output tray.
Copies	Indicates the default setting for number of copies to be printed.
Paper Size	Indicates the default setting for the size of paper.
Media Type	Indicates the default setting for the type of paper.
Unit	The units for specifying the size of custom paper is indicated between inches and millimeters.

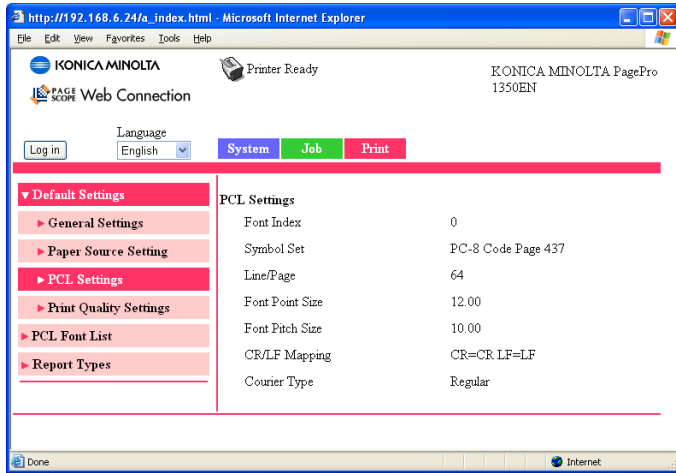
Paper Source Settings



The **Print/Default Settings/Paper Source Settings** window provides the following information.

Item		Description
Tray1	Paper Size	Indicates the setting for the size of paper loaded into media tray. The Width and Length settings appear if Paper Size is set to CUSTOM.
	Media Type	Indicates the setting for the type of media loaded into Tray.
General	Paper Time Out	If Proceed is indicated, the printer will proceed with the job using paper from the specified source. If Clear is indicated, the printer will cancel the current print job. If None is indicated, the printer will do nothing and will wait until paper is fed manually or until it receives a command to cancel the current print job. Printing resumes when the Cancel Button on the printer's control panel is pressed.
	Detect Size Error	If On is indicated, the printer will detect size errors. If Off is indicated, paper size error detection is turned off.

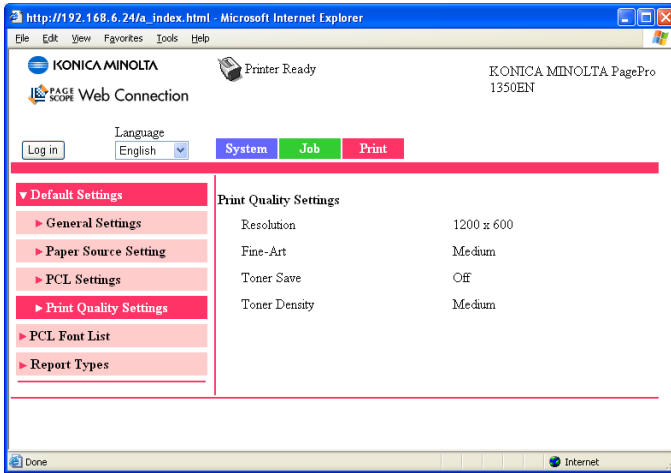
PCL Settings



The **Print/Default Settings/PCL Settings** window provides the following information.

Item	Description
Font Index	Displays the default font in the PCL language.
Symbol Set	Displays the symbol set used with the PCL language.
Line/Page	Indicates how many lines are in a page in PCL language.
Font Point Size	Displays the font size in the PCL language.
Font Pitch Size	Displays the font pitch in the PCL language.
CR/LF Mapping	Indicates CR/LF code definition in PCL language.
Courier Type	Displays the Courier type.

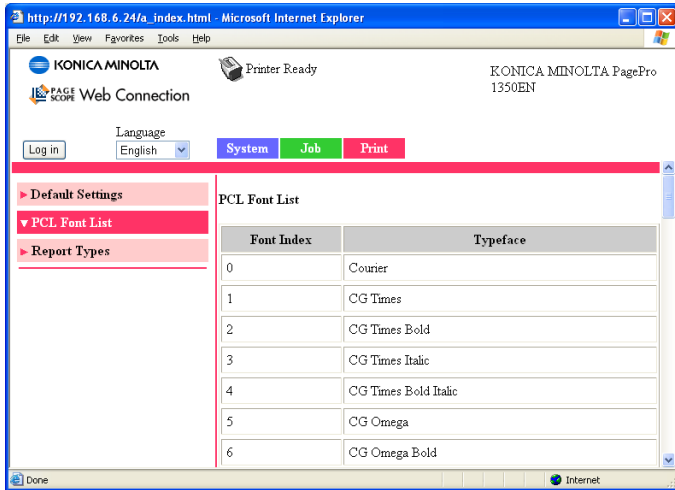
Print Quality Settings



The **Print/Default Settings/Print Quality Settings** window provides the following information.

Item	Description
Resolution	Displays the printing resolution.
Fine-Art	<p>If Off is indicated, the Fine Art option, which can enhance the print quality of images that include halftoning and screen patterns, is turned off.</p> <p>If Light is indicated, the edges of line art and text appear smoother because fewer dots are used.</p> <p>Medium is the default setting, which should be suitable for most printing needs. Select a different setting only if text and graphics appear too dark or too light when Medium is selected.</p> <p>If Dark is selected, the edges of line art and text appear smoother because more dots are used.</p>
Toner Save	<p>With this option, the printer conserves toner while printing. This will prolong the life of the toner cartridge.</p> <p>Less toner is consumed when Toner Save is set to On; however, image quality is reduced.</p> <p>If Off is indicated, the Toner Save function is turned off.</p> <p>If On is indicated, the Toner Save function is turned on.</p>
Toner Density	<p>Displays the setting for the toner density during printing.</p> <p>With a darker setting, toner can be used up relatively quickly.</p>

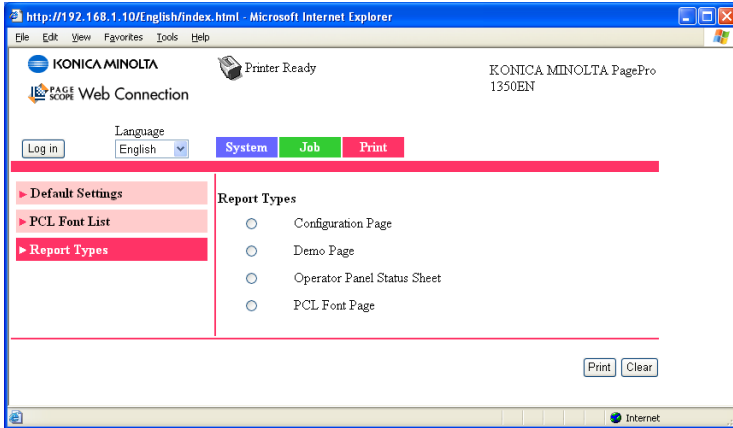
PCL Font List



The **Print/PCL Font List** page allows you to check the list of PCL fonts that the printer manages.

Item	Description
Font Index	Displays the control number of the font.
Typeface	Displays the name of the fonts.

Report Types



The **Print/Report Types** window provides the following information.

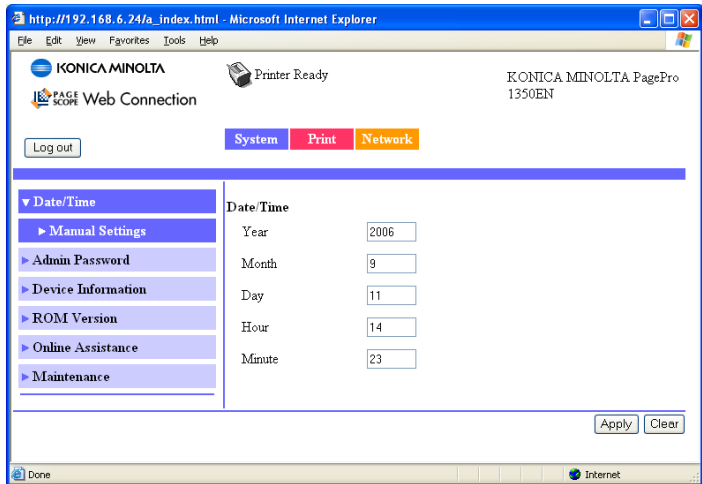
Item	Description
Configuration Page	Prints the printer configuration page.
Demo Page	Prints the printer demo page.
Operator Panel Status Sheet	Prints the Operator Panel Status Sheet.
PCL Font Page	Prints the PCL font lists.
Print button	Sends the page to the printer.
Clear button	Cancel the selected settings.

Configuring the Printer

In order to make any configuration changes through PageScope Web Connection, you must first enter Administrator Mode. See “Administrator Mode” on page 42 for instructions on logging into Administrator Mode.

System Page

This page allows you to configure several user- and printer-specific items.



Date/Time

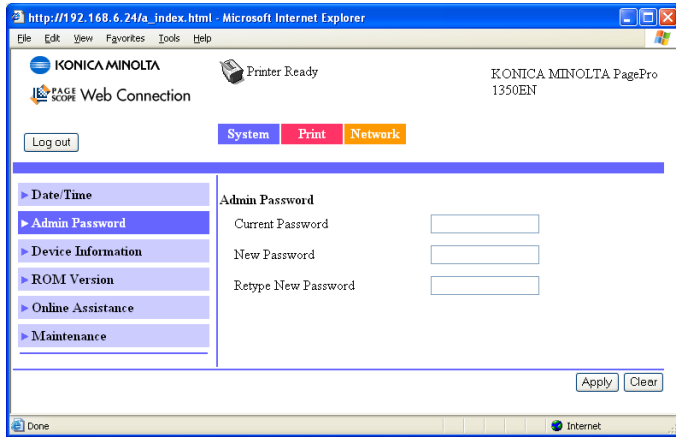
Manual Settings (shown above)

The **System/Date/Time/Manual Settings** window allows you to configure the following items:



Item	Description
Year	Specifies the year for the printer.
Month	Specifies the month for the printer.
Day	Specifies the day for the printer.
Hour	Specifies the hour for the printer.
Minute	Specifies the minute for the printer.
Apply button	Applies the configuration settings for this window.
Clear button	Resets all configuration settings to previous values.

Item	Description
Log out button	Logs out of Administrator Mode and returns to User Mode.

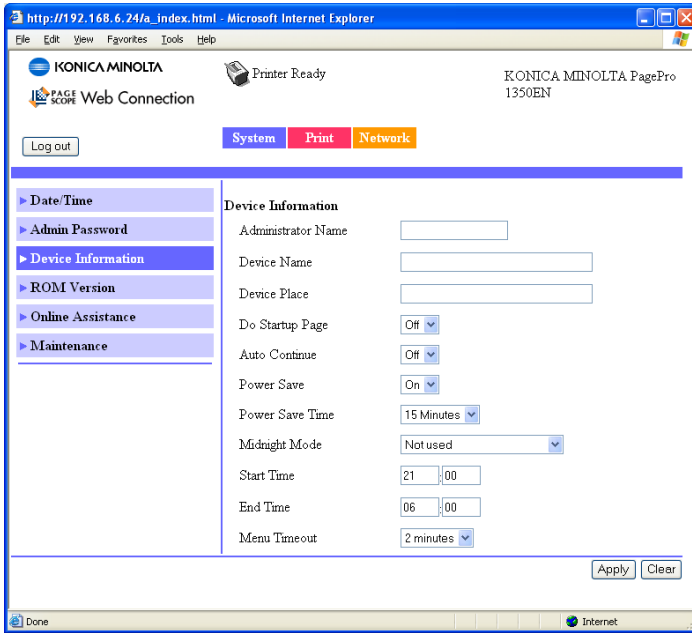
Admin Password



The **System/Admin Password** window allows you to configure the following items:

Item	Description
Current Password	Type in the current password.
New Password	Sets a new password to enter Administrator Mode. Default: [Blank]  <i>Passwords can be set to any string of numbers and letters (uppercase and lowercase) up to 16 characters in length.</i>
Retype New Password	Verifies the new password typed in the New Password text box.  <i>If the password typed in three text boxes doesn't match, the following message displays when you choose the Apply button: "Please retype the correct password." Click OK button, and then retype the passwords in both text boxes.</i>
Apply button	Applies the configuration settings for this window.
Clear button	Resets all configuration settings to previous values.
Log out button	Logs out of Administrator Mode and returns to User Mode.

Device Information



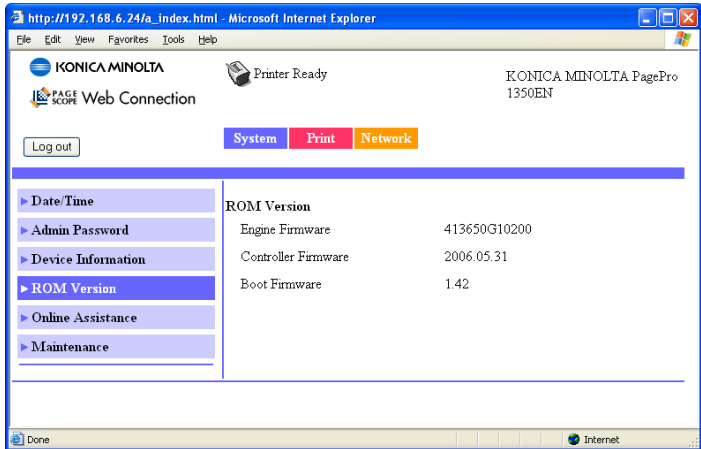
The **System/Device Information** window allows you to configure the following items:

Item	Description
Administrator Name	Specifies the name of the administrator for the printer. Range: Up to 127 characters Default: [Blank]
Device Name	Specifies the name of the printer. Range: Up to 127 characters Default: [Blank]
Device Place	Specifies the setup location for the printer. Range: Up to 127 characters Default: [Blank]
Do Startup Page	Selects whether or not a startup page is printed when the printer is turned on. Choices: On, Off Default: Off

Item	Description
Auto Continue	<p>Selects whether or not printing continues if the size or type of paper in the selected paper tray is different from the size or type of paper for the print job.</p> <p>Choices: On, Off Default: Off</p>
Power Save	<p>If On is selected, the machine will enter Power Save mode.</p> <p>If Off is selected, the machine will not enter Power Save mode.</p> <p>Choices: Off, On Default: On</p>
Power Save Time	<p>Specifies the length of time until the machine enters Power Save mode.</p> <p>This menu item appears only when Power Save is set to On.</p> <p>Choices: 15 minutes, 30 minutes, 1 Hours, 3 Hours Default: 15 minutes</p>
Midnight Mode	<p>The Midnight Mode function allows you to reduce printer noise while printing by reducing the print speed.</p> <p>Settings: Not used, Always used, Used for the specified time Default: Not used</p>
Start Time	<p>Specify the starting time for the Midnight Mode function. This parameter is available only when Used for the specified time is selected from the Midnight Mode drop-down list.</p>
End Time	<p>Specify the ending time for the Midnight Mode function. This parameter is available only when Used for the specified time is selected from the Midnight Mode drop-down list.</p>
Menu Timeout	<p>Specifies the length of time until the status screen is displayed when no operation is performed while a menu or help screen is displayed in the message window.</p> <p>Choices: 1 minute, 2 minutes, 5 minutes Default: 2 minutes</p>
Apply button	<p>Applies the configuration settings for this window.</p>

Item	Description
Clear button	Resets all configuration settings to previous values.
Log out button	Logs out of Administrator Mode and returns to User Mode.

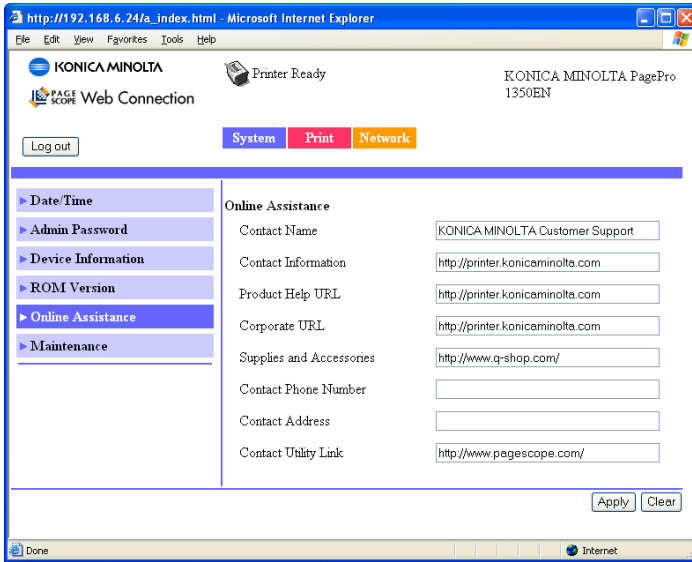
ROM Version



The **System/ROM Version** window provides the following information.

Item	Description
Engine Firmware Version	Displays the Firmware version of the printer engine.
Controller Firmware Version	Displays the Firmware version of the printer controller.
Boot Firmware Version	Displays the Firmware version of the Boot ROM.

Online Assistance



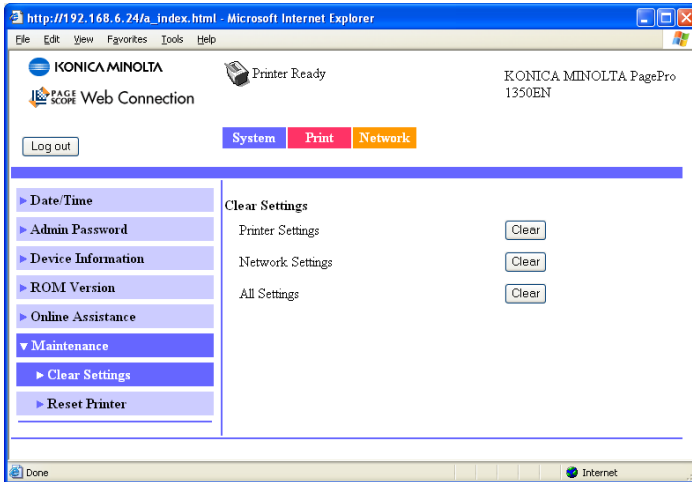
The **System/Online Assistance** window allows you to configure the following items:

Item	Description
Contact Name	Sets the name of the person or organization responsible for providing assistance with the printer. Range: Up to 63 characters Default: KONICA MINOLTA Customer Support
Contact Information	Sets the support contact URL for printer assistance. Range: Up to 71 characters Default: http://printer.konicaminolta.com
Product Help URL	Sets the help web site address for printer assistance. Range: Up to 71 characters Default: http://printer.konicaminolta.com
Corporate URL	Sets the KONICA MINOLTA corporate web site address. Range: Up to 71 characters Default: http://printer.konicaminolta.com

Item	Description
Supplies and Accessories	Sets the web address where you can purchase printer supplies and accessories. Range: Up to 71 characters Default: http://www.q-shop.com/
Contact Phone Number	Specifies the telephone number of the printer administrator. Range: Up to 31 characters Default: [Blank]
Contact Address	Specifies the e-mail address of the printer administrator. Range: Up to 63 characters Default: [Blank]
Contact Utility Link	Specifies the link to the Printer Management Utilities. Range: Up to 71 characters Default: http://www.pagescope.com/
Apply button	Applies the configuration settings for this window.
Clear button	Resets all configuration settings to previous values.
Log out button	Logs out of Administrator Mode and returns to User Mode.

Maintenance

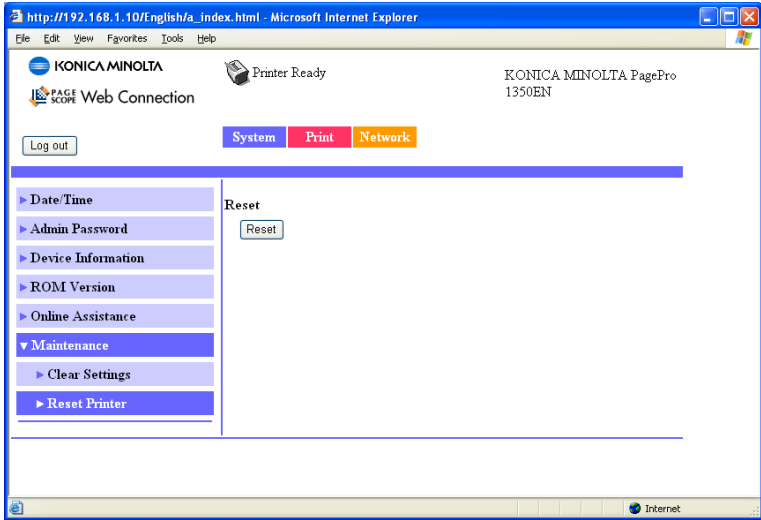
Clear Settings



The **System/Maintenance/Clear Settings** page allows you to reset the printer settings to its factory defaults.

Item	Description
Printer Settings	Resets the printer settings to their defaults.
Network Settings	Resets the network settings to their defaults.
All Settings	Resets all settings to their defaults.
Clear button	When clicked, the message “Is it OK to restore Factory Defaults?” appears. Click OK to automatically restart the printer and return the settings to their default values.
Log out button	Logs out of Administrator Mode and returns to User Mode.

Reset Printer



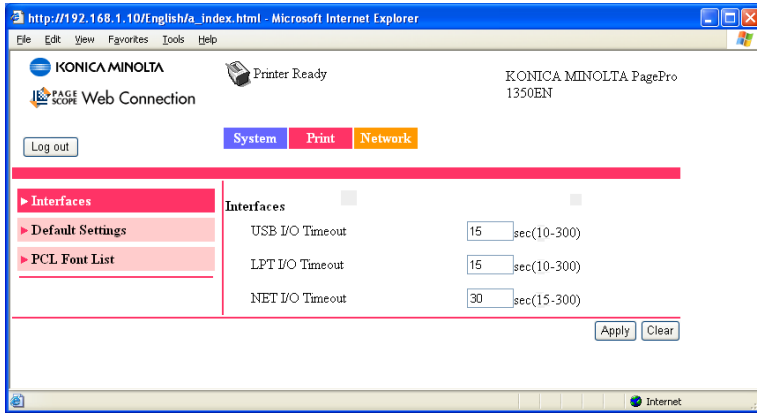
The **System/Maintenance/Reset Printer** page allows you to reset the printer controller.

Item	Description
Reset button	When clicked, the message “Is it OK to reset the Printer?” appears. Click OK to restart the printer and return the settings to their default values.
Log out button	Logs out of Administrator Mode and returns to User Mode.

Print Page

The **Print** page allows more detailed printer settings to be specified.

Interfaces

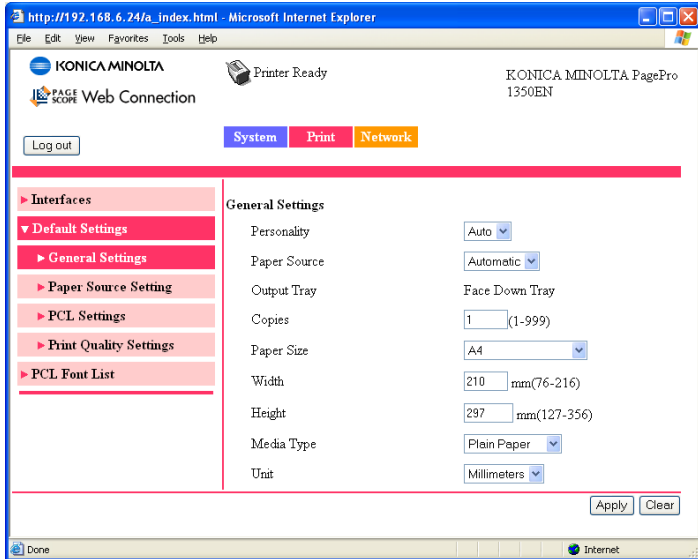


The **Print/Interfaces** window allows you to configure the following items:

Item	Description
USB I/O Timeout	Specifies the reception timeout for USB (in seconds). Range: 10-300 Default: 15
LPT I/O Timeout	Specifies the LPT reception timeout (in seconds). Range: 10-300 Default: 15
NET I/O Timeout	Specifies the NET reception timeout (in seconds). Range: 15-300 Default: 30
Apply button	Applies the configuration settings for this window.
Clear button	Resets all configuration settings to previous values.
Log out button	Logs out of Administrator Mode and returns to User Mode.

Default Settings

General Settings

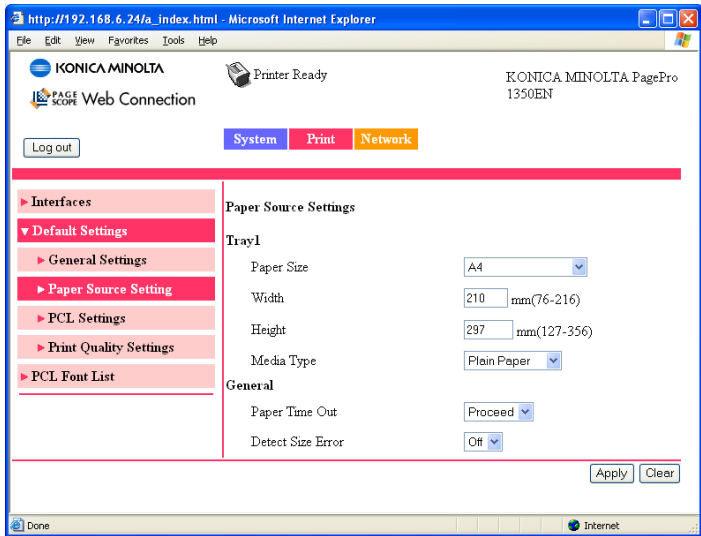


The **Print/Default Settings/General Settings** window allows you to configure the following items:

Item	Description
Personality	Selects default Printer language to be selected. Choices: Auto, PCL Default: Auto
Paper Source	The paper tray that is normally used can be specified. Choices: Automatic, Tray 1 Default: Automatic
Output Tray	Displays the name of the output tray.
Copies	Specifies the default setting for number of copies to be printed. Range: 1-999 Default: 1
Paper Size	Specifies the default setting for the size of media.

Item	Description
Width	Specifies the paper width when Paper Size is set to Custom. Range: 2.99 - 8.50 (inch) / 76 - 216 (mm)
Height	Specifies the paper length when Paper Size is set to Custom. Range: 5.00 - 14.00 (inch) / 127- 356(mm)
Media Type	Specifies the default setting for the type of paper. Choices: Plain Paper, Envelope, Transparency, Thick Paper, Postcard Default: Plain Paper
Unit	The unit for specifying the size of custom paper can be specified between inches and millimeters. Choices: Inches, Millimeters Default: Millimeters (European model), Inches (U.S. model)
Apply button	Applies the configuration settings for this window.
Clear button	Resets all configuration settings to previous values.
Log out button	Logs out of Administrator Mode and returns to User Mode.

Paper Source Setting

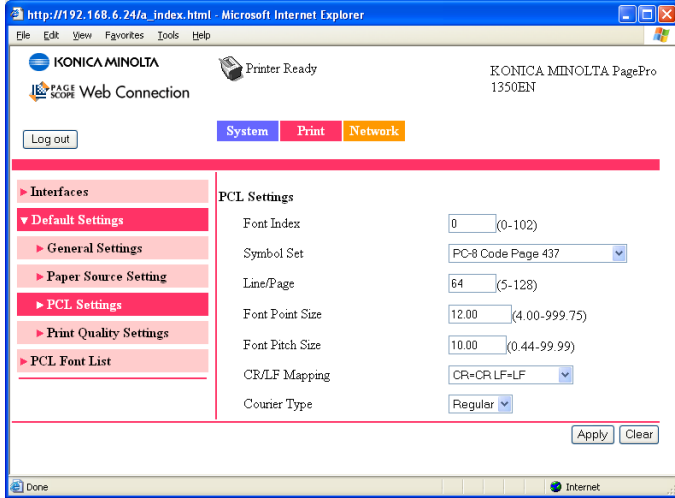


The **Print/Default Settings/Paper Source Setting** window allows you to configure the following items:


Item		Description
Tray 1	Paper Size	Specifies the setting for the size of media loaded into the tray. Default: A4 (European model), Letter (U.S. model)
	Width	Specifies the paper width when Paper Size is set to Custom. Range: 2.99 - 8.50 (inch) / 76 - 216 (mm)
	Height	Specifies the paper length when Paper Size is set to Custom. Range: 5.00 - 14.00 (inch) / 127 - 356 (mm)
	Media Type	Specifies the setting for the type of media loaded into the tray.

Item		Description
General	Paper Time Out	<p>The printer automatically enters a “paper timeout” standby state when the paper specified for a specific tray from the driver does not match the paper loaded in the tray. Use this setting to specify what the printer should do after it enters the paper timeout state.</p> <p>If Proceed is selected, the printer will proceed with the job using paper from the specified source.</p> <p>If Clear is selected, the printer will cancel the current print job.</p> <p>If None is selected, the printer will do nothing and will wait until paper is fed manually or until it receives a command to cancel the current print job. Printing resumes when the Cancel Button on the printer’s control panel is pressed.</p>
	Detect Size Error	<p>A size error occurs when the actual paper size is different from the paper size specified from the printer driver.</p> <p>If On is selected, the printer will detect size errors.</p> <p>If Off is selected, paper size error detection is turned off.</p>
Apply button		Applies the configuration settings for this window.
Clear button		Resets all configuration settings to previous values.
Log out button		Logs out of Administrator Mode and returns to User Mode.

PCL Settings

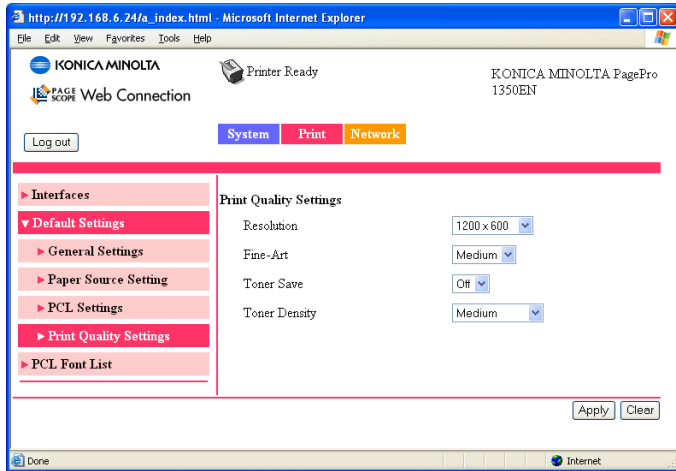


The **Print/Default Settings/PCL Settings** window allows you to configure the following items:

Item	Description
Font Index	<p>Sets the default font in the PCL language.</p> <p>Range: 0 - 58 Default: 0</p> <p> <i>The range is 0 - 58 if no fonts are downloaded, but the range is larger if fonts are downloaded.</i></p>
Symbol Set	<p>Selects the symbol set used with the PCL language.</p> <p>Default: PC-8</p>
Line/Page	<p>Selects how many lines are in a page in PCL language.</p> <p>Range: 5 - 128 Default: 64</p>
Font Point Size	<p>Sets the font size in the PCL language.</p> <p>Range: 4.00 - 999.75 Default: 12.00</p>

Item	Description
Font Pitch Size	Sets the font pitch in the PCL language. Range: 0.44 - 99.99 Default: 10.00
CR/LF Mapping	Selects CR/LF code definition in PCL language. Choices: CR=CR LF=LF, CR=CRLF LF=LF, CR=CR LF=LFCR, CR=CRLF LF=LFCR Default: CR=CR LF=LF
Courier Type	Select the Courier type. Settings: Regular, Dark Default: Regular
Apply button	Applies the configuration settings for this window.
Clear button	Resets all configuration settings to previous values.
Log out button	Logs out of Administrator Mode and returns to User Mode.

Print Quality Settings

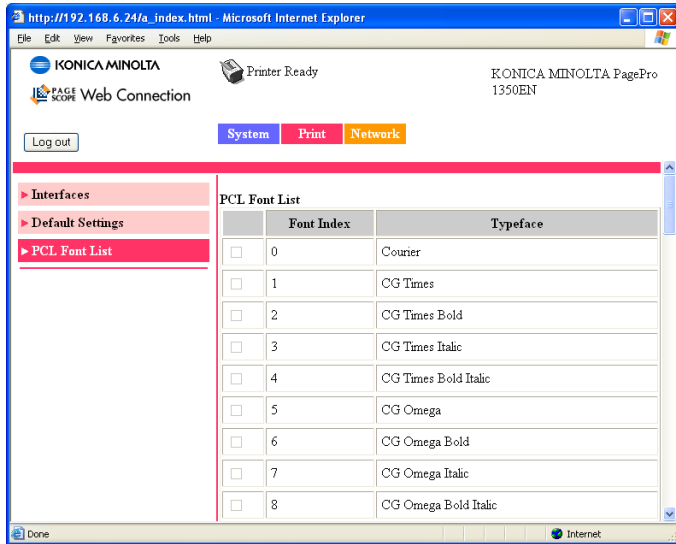


The **Print/Default Settings/Print Quality Settings** window allows you to configure the following items:


Item	Description
Resolution	Specify the printing resolution. Settings: 600 x 600dpi, 1200 x 600dpi or 1200 x 1200dpi Default: 1200 x 600dpi
Fine-Art	If Off is selected, the Fine Art option, which can enhance the print quality of images that include halftoning and screen patterns, is turned off. If Light is indicated, the edges of line art and text appear smoother because fewer dots are used. Selecting Medium should be suitable for most printing needs. Select a different setting only if text and graphics appear too dark or too light when Medium is selected. If Dark is selected, the edges of line art and text appear smoother because more dots are used. Settings: Off, Light, Medium, Dark Default: Medium

Item	Description
Toner Save	<p>With this option, the printer conserves toner while printing. This will prolong the life of the toner cartridge. Less toner is consumed when Toner Save is set to On; however, image quality is reduced.</p> <p>If Off is selected, the Toner Save function is turned off. If On is selected, the Toner Save function is turned on.</p> <p>Settings: Off, On Default: Off</p>
Toner Density	<p>Use this option to make fine adjustments in the density of the toner during printing. With a darker setting, toner can be used up relatively quickly.</p> <p>Settings: Extra Dark, Dark, Medium Dark, Medium, Light, Medium Light, Extra Light Default: Medium</p>
Apply button	Applies the configuration settings for this window.
Clear button	Resets all configuration settings to previous values.
Log out button	Logs out of Administrator Mode and returns to User Mode.

PCL Font List

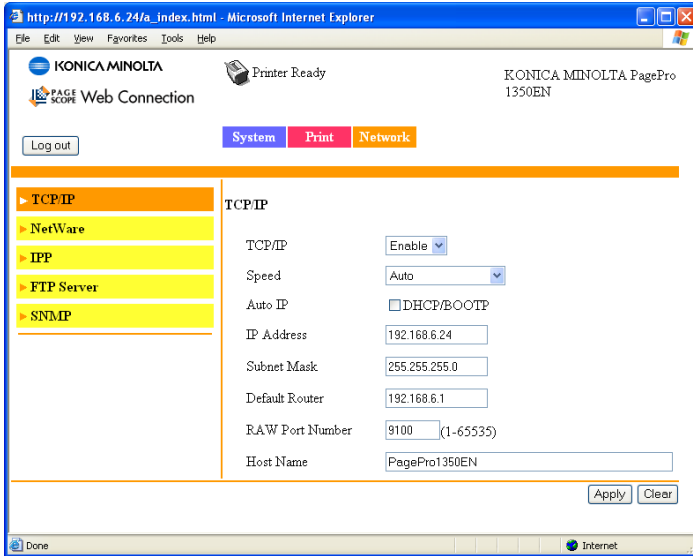


The **Print/PCL Font List** window allow you to configure the following items:

Item	Description
Check box	Select the check box of the font to be deleted, and then click Delete to delete the selected font from the printer.  <i>This checkbox is available only for Downloaded Fonts.</i>
Font Index	Displays the control number of the font.
Typeface	Displays the name of the font.
Log out button	Logs out of Administrator Mode and returns to User Mode.

Network Page




The Network page allows you to configure network settings. For more information on these protocols, see chapter 1, “Network Printing.”



TCP/IP(shown above)

The **Network/TCP/IP** window allows you to configure the following items. For more information on these TCP/IP, see chapter 1, “Network Printing.”

Item	Description
TCP/IP	TCP/IP is always enabled.
Speed	Specifies the operating mode and speed for Ethernet. Choices: Auto, 10Base-T(Full), 10Base-T(Half), 100Base-TX(Full), 100Base-TX(Half), Default: Auto
Auto IP	Specifies the automatic assigning method for the printer IP address. Choices: DHCP/BOOTP Default: Checked

Item	Description
IP Address*	<p>Sets the printer's IP address.</p> <p>Range: 0–255 for each xxx triplet Default: 192.168.1.2</p> <p> <i>If the specified IP address is outside of the allowable range, the value is not changed, even after the Apply button is clicked. The setting returns to the previous value.</i></p>
Subnet Mask*	<p>Sets the printer's subnet mask address.</p> <p>Range: 0–255 for each xxx triplet Default: 255.255.255.0</p> <p> <i>If the specified subnet mask address is outside of the allowable range, the value is not changed, even after the Apply button is clicked. The setting returns to the previous value.</i></p>
Default Router*	<p>If a router is used on the network, sets the router's address.</p> <p>Range: 0–255 for each xxx triplet Default: 192.168.1.2</p> <p> <i>If the specified router address is outside of the allowable range, the value is not changed, even after the Apply button is clicked. The setting returns to the previous value.</i></p>
RAW Port Number	<p>Identifies the number of the printer's RAW port.</p> <p>Choices: 1 - 65535 Default: 9100</p>
Host Name	<p>Specifies the host name.</p> <p>Range: Up to 31 characters Default: PagePro 1350EN</p>
Apply button	<p>Applies the configuration settings for this window.</p>
Clear button	<p>Resets all configuration settings to previous values.</p>
Log out button	<p>Logs out of Administrator Mode and returns to User Mode.</p>
<p>* Always enter these addresses without leading zeros. For example, 131.011.010.001 should be entered as 131.11.10.1.</p>	

NetWare

The screenshot shows a web browser window with the address bar displaying `http://192.168.6.24/a_index.html`. The page header includes the Konica Minolta logo, a 'Printer Ready' status icon, and the text 'KONICA MINOLTA PagePro 1350EN'. Below the header are navigation tabs for 'System', 'Print', and 'Network', with 'Network' being the active tab. A 'Log out' button is also present.

The main content area is divided into two columns. The left column contains a sidebar with expandable menu items: 'TCP/IP', 'NetWare', 'IPP', 'FTP Server', and 'SNMP'. The right column contains the configuration settings for the selected 'NetWare' section.

NetWare

- NetWare Print: Enable
- Frame Type: AUTO
- Mode: PServer

PServer

- Print Server Name: PagePro1350EN
- Print Server Password: [Empty field]
- Retype Password: [Empty field]
- Print Queue Scan Rate: 1 (1-65535)
- Bindery/NDS: NDS
- Preferred File Server: [Empty field]
- Preferred NDS Context Name: [Empty field]
- Preferred NDS Tree Name: [Empty field]

NPrinter/RPrinter

- Printer Name: PagePro1350EN
- Printer Number: 255 (0-255,255:Auto)

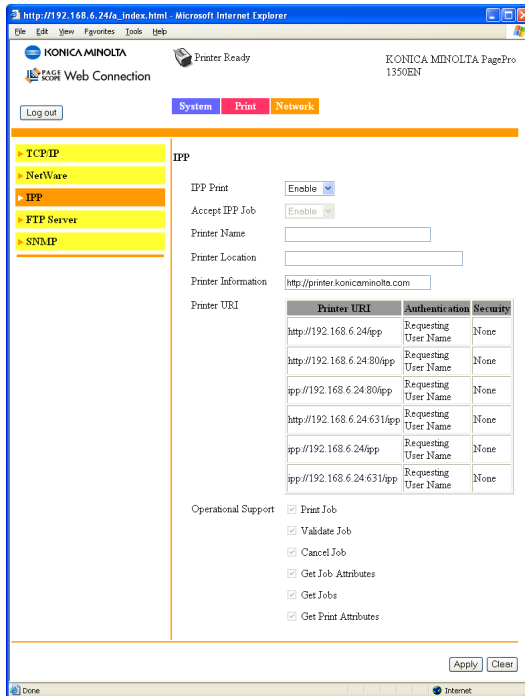
At the bottom right of the configuration area, there are 'Apply' and 'Clear' buttons. The browser's status bar at the bottom shows 'Done' and 'Internet'.

The **Network/NetWare** window allows you to configure the following items:


Item		Description
NetWare	NetWare Print	Enables or Disables the NetWare print option. Choices: Enable, Disable Default: Enable
	Frame Type	Specifies the Frame Type. Choices: Auto, Ethernet802.2, Ethernet 802.3, Ethernet II, Ethernet SNAP Default: Auto
	Mode	Specifies the NetWare Configuration mode. Choices: PServer, NPrinter/RPrinter Default: Pserver
PServer	Print Server Name	Sets the Print Server Name for the printer. Range: Up to 47 characters Default: [Blank]
	Print Server Password	Sets the Print Server password. Range: Up to 31 characters Default: [Blank]
	Retype Password	Verifies the new password typed in the Print Server Password text box. Range: Up to 31 characters Default: [Blank]
	Print Queue Scan Rate	Sets the number of the queue scan interval. Range: 1-65535 (Seconds) Default: 1

Item	Description	
	Bindery/NDS	Specifies the bindery options. Choices: NDS, Bindery/NDS, Bindery Default: NDS
	Preferred File Server	Sets the Preferred File Server for the printer. Range: Up to 47 characters Default: [Blank]
	Preferred NDS Context Name	Sets the Preferred NDS Context for the printer. Range: Up to 127 characters Default: [Blank]
	Preferred NDS Tree Name	Sets the Preferred NDS Tree for the printer. Range: Up to 32 characters Default: [Blank]
NPrinter/ RPrinter	Printer Name	Sets the printer's name. Range: Up to 47 characters Default: PagePro1350EN
	Printer Number	Sets the Printer Number. Range: 0 - 255 Default: 255
Apply button		Applies the configuration settings for this window.
Clear button		Resets all configuration settings to previous values.
Log out button		Logs out of Administrator Mode and returns to User Mode.





IPP





The **Network/IPP** window allows you to configure the following items. For details on IPP, refer to chapter 1, “Network Printing.” In order to apply the settings, the printer must be turned off, then on again after the setting is specified.

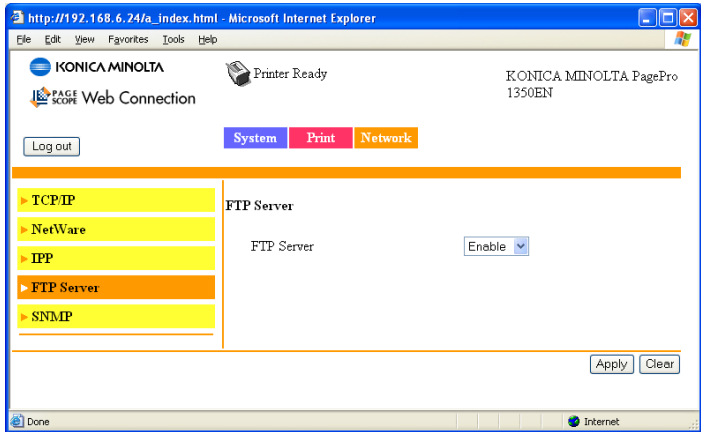
Item	Description
IPP Print	Sets whether or not to use IPP. Choices: Enable, Disable Default: Enable
Accept IPP Job	Sets whether or not to accept IPP Job. Choices: Enable, Disable Default: Enable  <i>This item is automatically set to Enable or Disable depending on IPP print settings.</i>

Item	Description
Printer Name	Sets the printer's name. Range: Up to 127 characters Default: [Blank]
Printer Location	Sets the printer's location. Range: Up to 127 characters Default: [Blank]
Printer Information	Specifies the printer information. Range: Up to 71 characters Default: http://printer.konicaminolta.com
Printer URI	Specifies the printer's Uniform Resource Identifier (URI), authentication, and security. Range: Non-configurable Defaults: <ul style="list-style-type: none"> ■ http://192.168.1.2/ipp RequestingUserName None ■ http://192.168.1.2:80/ipp RequestingUserName None ■ http://192.168.1.2:80/ipp RequestingUserName None ■ http://192.168.1.2:631/ipp RequestingUserName None ■ http://192.168.1.2/ipp RequestingUserName None ■ http://192.168.1.2:631/ipp RequestingUserName None

Item		Description
Operational Support	Print Job	<p>If this check box is selected, Print Job is enabled.</p> <p>Default: Checked</p> <p> <i>This item is automatically set to Enable or Disable depending on IPP print settings.</i></p>
	Validate Job	<p>If this check box is selected, Validate Job is enabled.</p> <p>Default: Checked</p> <p> <i>This item is automatically set to Enable or Disable depending on IPP print settings.</i></p>
	Cancel Job	<p>If this check box is selected, Cancel Job is enabled.</p> <p>Default: Checked</p> <p> <i>This item is automatically set to Enable or Disable depending on IPP print settings.</i></p>
	Get Job Attributes	<p>If this check box is selected, Get Job Attribute is enabled.</p> <p>Default: Checked</p> <p> <i>This item is automatically set to Enable or Disable depending on IPP print settings.</i></p>

Item		Description
	Get Jobs	<p>If this check box is selected, Cancel Job is enabled.</p> <p>Default: Checked</p> <p> <i>This item is automatically set to Enable or Disable depending on IPP print settings.</i></p>
	Get Print Attributes	<p>If this check box is selected, Get Printer Attribute is enabled.</p> <p>Default: Checked</p> <p> <i>This item is automatically set to Enable or Disable depending on IPP print settings.</i></p>
Apply button		Applies the configuration settings for this window.
Clear button		Resets all configuration settings to previous values.
Log out button		Logs out of Administrator Mode and returns to User Mode.

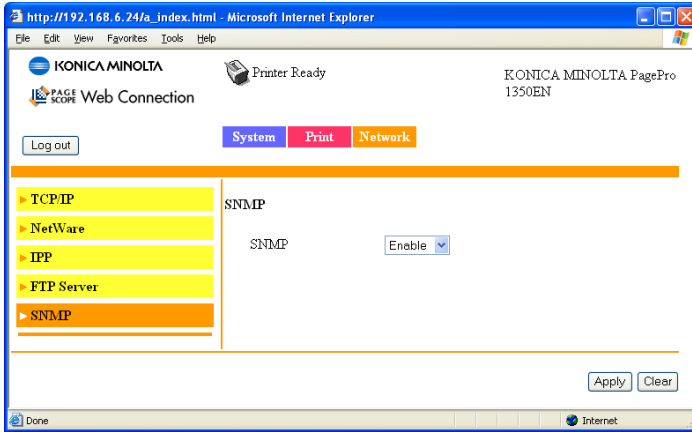
FTP Server



The **Network/FTP Server** window allows you to configure the following items:

Item	Description
FTP Server	Enables or Disables the FTP server. Choices: Enable, Disable Default: Enable
Apply button	Applies the configuration settings for this window.
Clear button	Resets all configuration settings to previous values.
Log out button	Logs out of Administrator Mode and returns to User Mode.

SNMP



The **Network/SNMP** window allows you to configure the following items:

Item	Description
SNMP	If Enable is selected, SNMP is enabled. Choices: Enable, Disable Default: Enable
Apply button	Applies the configuration settings for this window.
Clear button	Resets all configuration settings to previous values.
Log out button	Logs out of Administrator Mode and returns to User Mode.

Appendix

A

Font Information

o: Supported x: Not supported

Family/Standard		PCL Code																											
PCL code		ROMAN8	ISOL1	ISOL2	ISOL5	PC8	PC8DN	PC850	PC852	PC8TK	WINL1	WINL2	WINL5	DESKTOP	PS TEXT	PSNINTL	VNUS	MSPUBL	IMATH8	PSMATH	VNMATH	PIFONT	LEGAL	ISO4	ISO6	ISO11	ISO15	SI017	AI021
ID	Typeface (= Linked Typeface)	Roman-8	ISO 8859-1 Latin 1 (ECMA-94)	ISO 8859-2 Latin 2	ISO 8859-9 Latin 5	PC-8 Code Page 437	PC-8 Danish/Norwegian (437N)	PC-850 Multilingual	PC-852 Latin 2	PC-8 Turkish (437T)	Windows 98 Latin 1	Windows 98 Latin 2	Windows 98 Latin 5	Desktop	PS Text	Ventura International	Ventura US	Microsoft Publishing Math-8	PS Math	Ventura Math	PI Font	Legal	ISO 4: United Kingdom	ISO 6: ASCII	ISO 11: Swedish for Names	ISO 15: Italian	ISO 17: Spanish	ISO 21: German	
000	Courier	o	o	o	o	o	o	o	o	o	o	o	o	o	o	o	o	o	o	o	o	o	o	o	o	o	o	o	
001	CG Times	o	o	o	o	o	o	o	o	o	o	o	o	o	o	o	o	o	o	o	o	o	o	o	o	o	o	o	
002	CG Times Bold	o	o	o	o	o	o	o	o	o	o	o	o	o	o	o	o	o	o	o	o	o	o	o	o	o	o	o	
003	CG Times Italic	o	o	o	o	o	o	o	o	o	o	o	o	o	o	o	o	o	o	o	o	o	o	o	o	o	o	o	
004	CG Times Bold Italic	o	o	o	o	o	o	o	o	o	o	o	o	o	o	o	o	o	o	o	o	o	o	o	o	o	o	o	
005	CG Omega	o	o	o	o	o	o	o	o	o	o	o	o	o	o	o	o	o	o	o	o	o	o	o	o	o	o	o	
006	CG Omega Bold	o	o	o	o	o	o	o	o	o	o	o	o	o	o	o	o	o	o	o	o	o	o	o	o	o	o	o	
007	CG Omega Italic	o	o	o	o	o	o	o	o	o	o	o	o	o	o	o	o	o	o	o	o	o	o	o	o	o	o	o	
008	CG Omega Bold Italic	o	o	o	o	o	o	o	o	o	o	o	o	o	o	o	o	o	o	o	o	o	o	o	o	o	o	o	
009	Coronet	o	o	o	o	o	o	o	o	o	o	o	o	o	o	o	o	o	o	o	o	o	o	o	o	o	o	o	
010	Clarendon Condensed	o	o	o	o	o	o	o	o	o	o	o	o	o	o	o	o	o	o	o	o	o	o	o	o	o	o	o	
011	Univers Medium	o	o	o	o	o	o	o	o	o	o	o	o	o	o	o	o	o	o	o	o	o	o	o	o	o	o	o	
012	Univers Bold	o	o	o	o	o	o	o	o	o	o	o	o	o	o	o	o	o	o	o	o	o	o	o	o	o	o	o	
013	Univers Medium Italic	o	o	o	o	o	o	o	o	o	o	o	o	o	o	o	o	o	o	o	o	o	o	o	o	o	o	o	
014	Univers Bold Italic	o	o	o	o	o	o	o	o	o	o	o	o	o	o	o	o	o	o	o	o	o	o	o	o	o	o	o	
015	Univers Medium Condensed	o	o	o	o	o	o	o	o	o	o	o	o	o	o	o	o	o	o	o	o	o	o	o	o	o	o	o	
016	Univers Bold Condensed	o	o	o	o	o	o	o	o	o	o	o	o	o	o	o	o	o	o	o	o	o	o	o	o	o	o	o	
017	Univers Medium Condensed Italic	o	o	o	o	o	o	o	o	o	o	o	o	o	o	o	o	o	o	o	o	o	o	o	o	o	o	o	
018	Univers Bold Condensed Italic	o	o	o	o	o	o	o	o	o	o	o	o	o	o	o	o	o	o	o	o	o	o	o	o	o	o	o	
019	Antique Olive	o	o	o	o	o	o	o	o	o	o	o	o	o	o	o	o	o	o	o	o	o	o	o	o	o	o	o	
020	Antique Olive Bold	o	o	o	o	o	o	o	o	o	o	o	o	o	o	o	o	o	o	o	o	o	o	o	o	o	o	o	
021	Antique Olive Italic	o	o	o	o	o	o	o	o	o	o	o	o	o	o	o	o	o	o	o	o	o	o	o	o	o	o	o	
022	Garamond Antiqua	o	o	o	o	o	o	o	o	o	o	o	o	o	o	o	o	o	o	o	o	o	o	o	o	o	o	o	
023	Garamond Halbfett	o	o	o	o	o	o	o	o	o	o	o	o	o	o	o	o	o	o	o	o	o	o	o	o	o	o	o	
024	Garamond Kursiv	o	o	o	o	o	o	o	o	o	o	o	o	o	o	o	o	o	o	o	o	o	o	o	o	o	o	o	
025	Garamond Halbfett Kursiv	o	o	o	o	o	o	o	o	o	o	o	o	o	o	o	o	o	o	o	o	o	o	o	o	o	o	o	
026	Marigold	o	o	o	o	o	o	o	o	o	o	o	o	o	o	o	o	o	o	o	o	o	o	o	o	o	o	o	
027	Albertus Medium	o	o	o	o	o	o	o	o	o	o	o	o	o	o	o	o	o	o	o	o	o	o	o	o	o	o	o	
028	Albertus Extra Bold	o	o	o	o	o	o	o	o	o	o	o	o	o	o	o	o	o	o	o	o	o	o	o	o	o	o	o	
029	Arial	o	o	o	o	o	o	o	o	o	o	o	o	o	o	o	o	o	o	o	o	o	o	o	o	o	o	o	
030	Arial Bold	o	o	o	o	o	o	o	o	o	o	o	o	o	o	o	o	o	o	o	o	o	o	o	o	o	o	o	
031	Arial Italic	o	o	o	o	o	o	o	o	o	o	o	o	o	o	o	o	o	o	o	o	o	o	o	o	o	o	o	
032	Arial Bold Italic	o	o	o	o	o	o	o	o	o	o	o	o	o	o	o	o	o	o	o	o	o	o	o	o	o	o	o	
033	Times New Roman	o	o	o	o	o	o	o	o	o	o	o	o	o	o	o	o	o	o	o	o	o	o	o	o	o	o	o	
034	Times New Roman Bold	o	o	o	o	o	o	o	o	o	o	o	o	o	o	o	o	o	o	o	o	o	o	o	o	o	o	o	
035	Times New Roman Italic	o	o	o	o	o	o	o	o	o	o	o	o	o	o	o	o	o	o	o	o	o	o	o	o	o	o	o	
036	Times New Roman Bold Italic	o	o	o	o	o	o	o	o	o	o	o	o	o	o	o	o	o	o	o	o	o	o	o	o	o	o	o	
037	Symbol	x	x	x	x	x	x	x	x	x	x	x	x	x	x	x	x	x	x	x	x	x	x	x	x	x	x	x	
038	Wingdings	x	x	x	x	x	x	x	x	x	x	x	x	x	x	x	x	x	x	x	x	x	x	x	x	x	x	x	
039	Courier Bold	o	o	o	o	o	o	o	o	o	o	o	o	o	o	o	o	o	o	o	o	o	o	o	o	o	o	o	

Family		Standard	
PCL code		PCL Code	
ID	Typeface (= Linked Typeface)	8U	ROMAN8
040	Courier Italic	o	o
041	Courier Bold Italic	o	o
042	Letter Gothic	o	o
043	Letter Gothic Bold	o	o
044	Letter Gothic Italic	o	o
045	Line Printer	o	o
046	Naskh (= Courier)	x	x
047	Naskh Bold (= Courier Bold)	x	x
048	Koufi (= Letter Gothic)	x	x
049	Koufi Bold (= Letter Gothic Bold)	x	x
		ON	ISOL1
		2N	ISOL2
		5N	ISOL5
		10U	PC8
		11U	PC8DN
		12U	PC850
		17U	PC852
		9T	PC8TK
		19U	WINL1
		9F	WINL2
		5T	WINL5
		7J	DESKTOP
		10J	PSTEXT
		13J	VNINTL
		14J	VNUS
		6J	MSPUBL
		8M	MATH8
		5M	PSMATH
		6M	VNMATH
		15U	PIFONT
		1U	LEGAL
		1E	ISO4
		0U	ISO6
		0S	ISO11: Swedish for Names
		0I	ISO 15: Italian
		2S	ISO 17: Spanish
		1G	ISO 21: German

Family		Standard										Cyrillic		Greek		Hebrew		Ara- bic											
PJL code		ISO60	ISO69	WIN90	MCTEXT	ISOL6	PC775	PC1004	WINBALT	PC860	PC865	n/a	n/a	PC866CYL	ISOCTR	WINCYR	PC866UKR	PC866GRK	WINGRK	ISOGRK	GREEK8	PC862HEB	ISOHEB	HEBREW8	HEBREW7	PC864ARA	ARABIC8	HPWARA	
PCL Code		0D	1F	9U	12J	6N	26U	9I	19L	20U	25U	19M	579L	3R	10N	9R	14R	10G	12G	9G	12N	8G	15H	7H	8H	0H	10V	8V	9V
ID	Typeface (= Linked Typeface)	ISO 60: Norwegian Version 1	ISO 69: French	Windows 3.0 Latin 1	MC Text	ISO 8859-10 Latin 6	PC-775 Baltic (PC-8 Latin 6)	PC-1004 OS/2	Windows 98 Latin 6 (Baltic)	PC-860 Portugal	PC-865 Nordic	Symbol	Windows	PC-866 Cyrillic	ISO 8859-5 Latin/Cyrillic	Windows 98 Cyrillic	PC-866 Ukrainian	PC-851 Greece	PC-8 Latin/Greek	Windows 98 Greek	ISO 8859-7 Latin/Greek	Greek-8	PC-862 Latin/Hebrew	ISO 8859-8 Latin/Hebrew	Hebrew-8	Hebrew-7	PC-864 Latin/Arabic	Arabic-8	Windows 98 Arabic
040	Courier Italic	o	o	o	o	o	o	o	o	o	o	x	x	o	o	o	o	o	o	o	o	o	o	o	o	o	o	o	o
041	Courier Bold Italic	o	o	o	o	o	o	o	o	o	o	x	x	o	o	o	o	o	o	o	o	o	o	o	o	o	o	o	o
042	Letter Gothic	o	o	o	o	o	o	o	o	o	o	x	x	o	o	o	o	o	o	o	o	o	o	o	o	o	o	o	o
043	Letter Gothic Bold	o	o	o	o	o	o	o	o	o	o	x	x	o	o	o	o	o	o	o	o	o	o	o	o	o	o	o	o
044	Letter Gothic Italic	o	o	o	o	o	o	o	o	o	o	x	x	o	o	o	o	o	o	o	o	o	o	o	o	o	o	o	o
045	Line Printer	x	x	x	x	x	x	x	x	x	x	x	x	o	o	o	o	o	o	o	o	o	o	o	o	o	o	o	o
046	Naskh (= Courier)	x	x	x	x	x	x	x	x	x	x	x	x	x	x	x	x	x	x	x	x	x	x	x	x	x	x	x	x
047	Naskh Bold (= Courier Bold)	x	x	x	x	x	x	x	x	x	x	x	x	x	x	x	x	x	x	x	x	x	x	x	x	x	x	x	x
048	Koufi (= Letter Gothic)	x	x	x	x	x	x	x	x	x	x	x	x	x	x	x	x	x	x	x	x	x	x	x	x	x	x	x	x
049	Koufi Bold (= Letter Gothic Bold)	x	x	x	x	x	x	x	x	x	x	x	x	x	x	x	x	x	x	x	x	x	x	x	x	x	x	x	x

Index

A

Active job list, PageScope Web Connection

Print job status 55

Administrator mode, PageScope Web Connection 42

B

BOOTP 3

C

Clear settings, PageScope Web Connection 73

Color profile, PageScope Web Connection 63, 85

Configuration

Network settings 85

Printer, via PageScope Web Connection 64

Configuration, PageScope Web Connection 85

FTP 94

NetWare 87

SNMP 95

Consumables, PageScope Web Connection 52

Counter, PageScope Web Connection 53

Crown Print Monitor+ 27

D

Date/Time, PageScope Web Connection 64

Details, PageScope Web Connection 47

Done job list 57

Paper source 47

Device information, PageScope Web Connection 46, 67

Device status, PageScope Web Connection 45

DHCP 3

Done job list, PageScope Web Connection 56

F

Form overlay, PageScope Web Connection 85

FTP PageScope Web Connection 94

G

General settings, PageScope Web Connection 58, 76

H

Hard disk, PageScope Web Connection 50

Host table 38

HTTP 4

I

Installing Crown Print Monitor+ 27

Installing Internet Explorer 6.0 25

Installing missing network components 25

Installing TCP/IP 25

Installing TCP/IP Protocol 27

Installing the Microsoft TCP/IP Printing 29

Installing the PCL6 Driver 16

Interface, PageScope Web Connection 50

Internet Explorer 6.0 25

IPP 4

Printing via 32

IPP, PageScope Web Connection 90

IPX/SPX 4

J

Job, PageScope Web Connection 55

Active job list 55

Done job list 56

N

NetWare, PageScope Web Connection 87

Network connection 5

DHCP/BOOTP 6

Ethernet Interface 5

Making the Connection 5

New Printer Wizard 7

PageScope Network Connection 10

PageScope Network Setup 11

PCL6 Driver Setup 7

Theory 5

Network, PageScope Web Connection

Configuration 85

O

Online assistance, PageScope Web Connection 54, 71

Output tray, PageScope Web Connection 49

P

PageScope Web Connection 37

Active job 55

Administrator mode 42

Clear settings 73

Color profile 63, 85

Consumables 52

Counter 53

Current status 42

Date/Time 64

Details 47

Device information 46, 67

Display language 37

Done job list 56

Form overlay 85

FTP 94

General settings 58, 76

Hard disk 50

Interface information 50

Job 55

Navigation 41

NetWare 87

- Online assistance 54, 55
- Output tray 49
- Paper source 47
- Paper source settings 59, 78
- PCL font 62
- PCL settings 60, 80
- Print quality settings 61, 82
- Printer configuration 64
- Report types 63
- Requirements 37
- Reset printer 74
- ROM version 70
- SNMP 95
- User mode 42
- Viewing printer status 44
- Window 41
- Paper source settings, PageScope Web Connection** 59, 78
- Paper source, PageScope Web Connection** 47
- Password, PageScope Web Connection** 66
- PCL font, PageScope Web Connection** 62
- PCL settings, PageScope Web Connection** 60, 80
- PCL6 Driver** 16
- Port 9100** 4
- Print quality settings, PageScope Web Connection** 61, 82
- Print, PageScope Web Connection** 58, 75
 - Color profile 63, 85
 - Form overlay 85
 - General settings 58, 76
 - Paper source settings 59, 78
 - PCL font 62
 - PCL settings 60, 80
 - Print quality settings 61, 82
 - Report types 63
- Printer name** 38
- Printer status** 44
- Protocols, network**
 - BOOTP 3
 - DHCP 3
 - HTTP 4
 - IPP 4

SNMP 4

R

- Report types, PageScope Web Connection** 63
- Reset printer** 34
- Reset printer, PageScope Web Connection** 74
- ROM version, PageScope Web Connection** 70

S

- SNMP 4
- SNMP, PageScope Web Connection** 95
- Summary, PageScope Web Connection**
 - Device status 45
- System, PageScope Web Connection** 44, 64
 - Clear settings 73
 - Counter 53
 - Date/Time 64
 - Details 47
 - Device information 46, 67
 - Hard disk 50
 - Interface information 50
 - Online assistance 54, 71
 - Output tray 49
 - Password 66
 - Reset printer 74
 - ROM version 70
 - Summary 45

T

- TCP/IP** 25, 27, 29

U

- User mode, PageScope Web Connection** 42

W

- Web page, printer** 38

